



A spatial based management plan for sandell

Henrik S. Lund

Søren Anker Pedersen

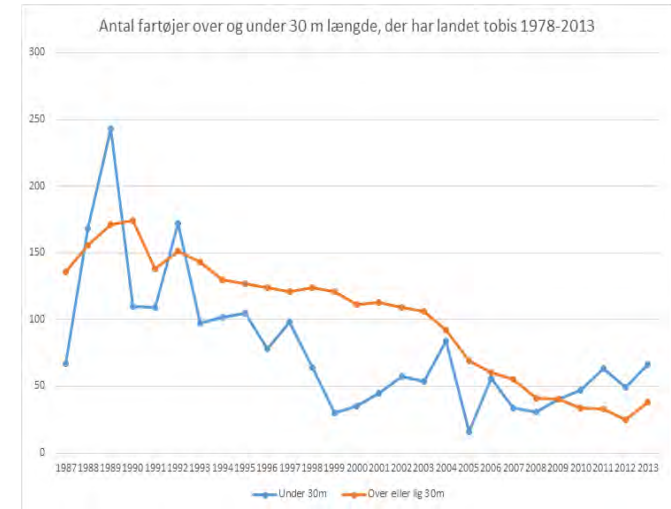
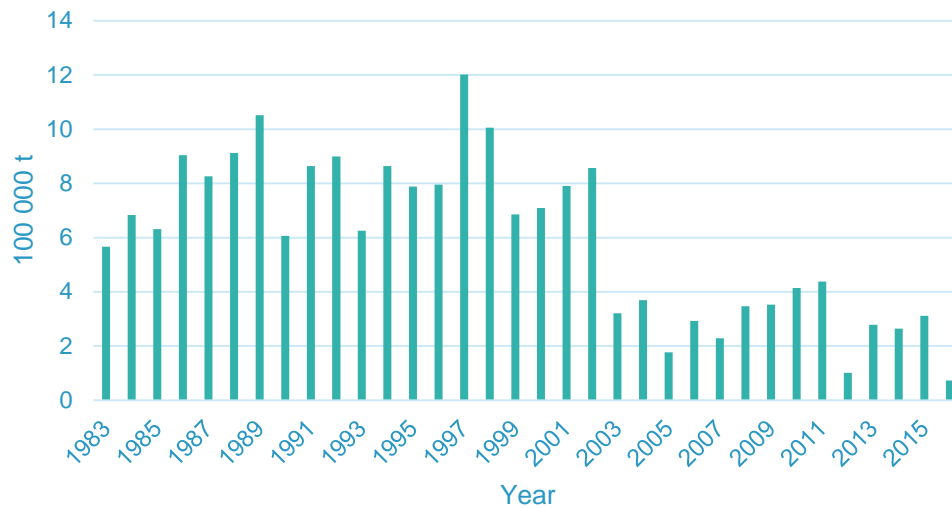
Claus R. Sparrevohn

- Fishery,
- Biologi of sandeel,
- Present management,
- Suggestion for a future management

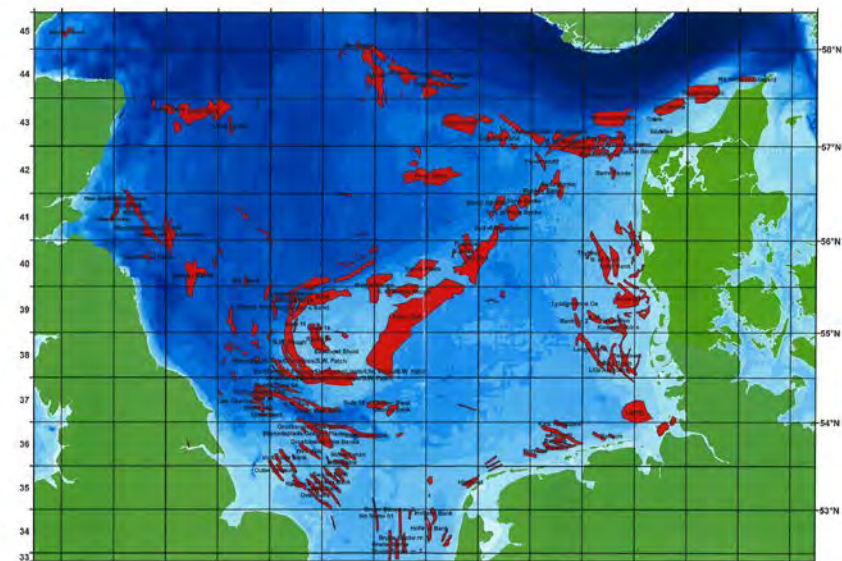
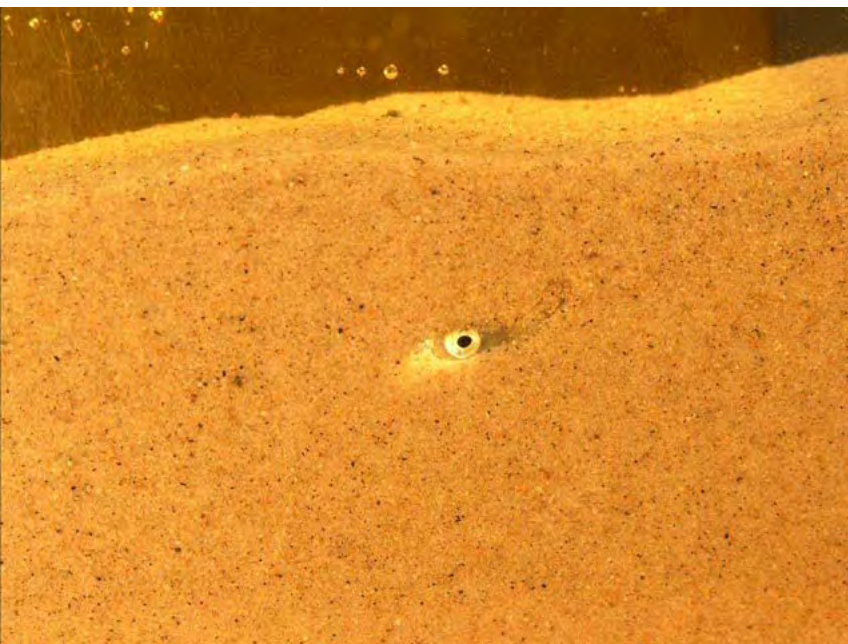
Fishery

- Value as fishmeal and oil: 100-150 mio. euro,
- Recruitment fishery,
- Annual catches up to 1 mio. t.,
- ITQ system in place since 2007,

Total sandeel catches



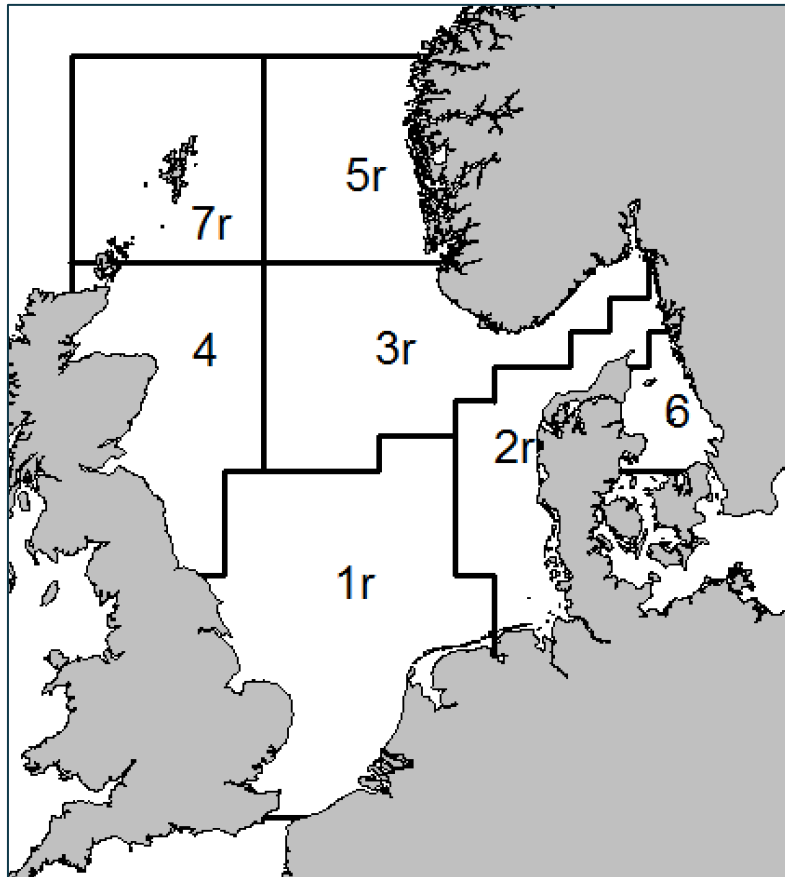
Biology



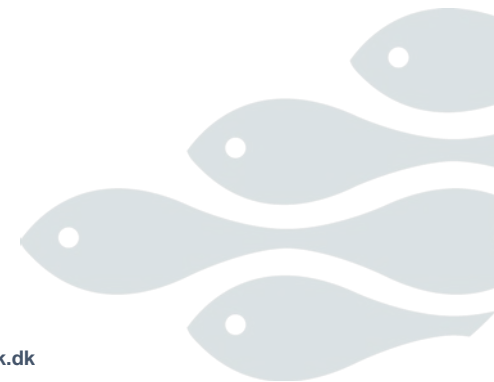
From Behrens et al



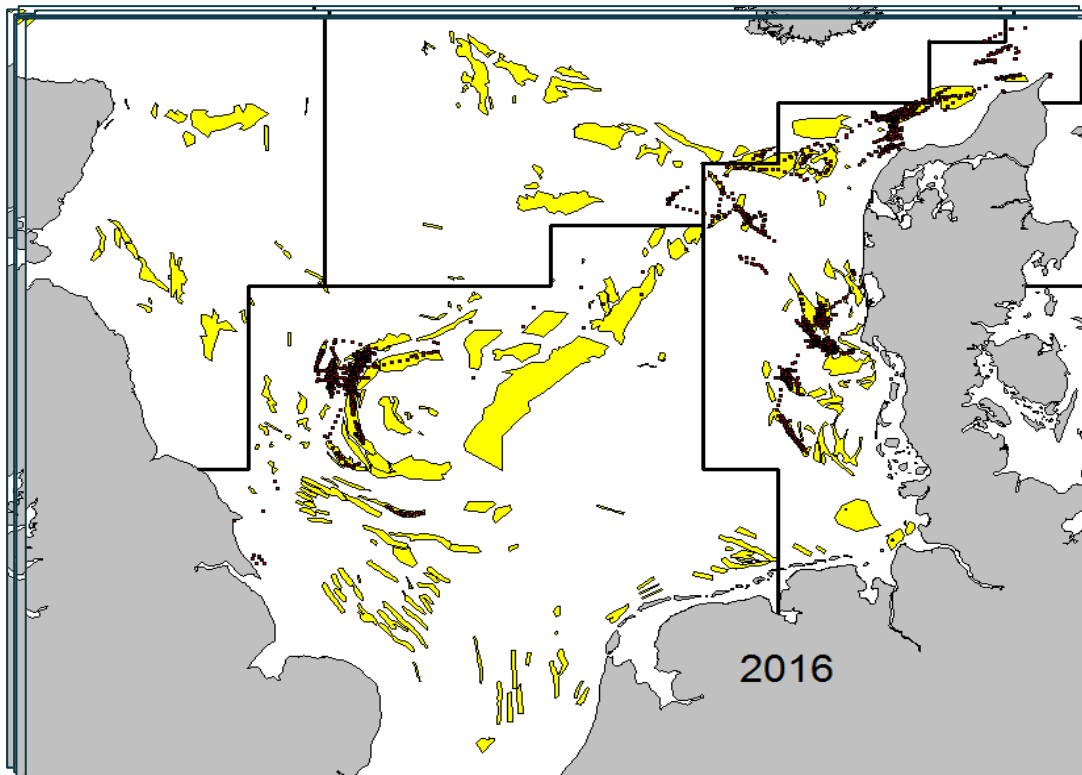
Present management



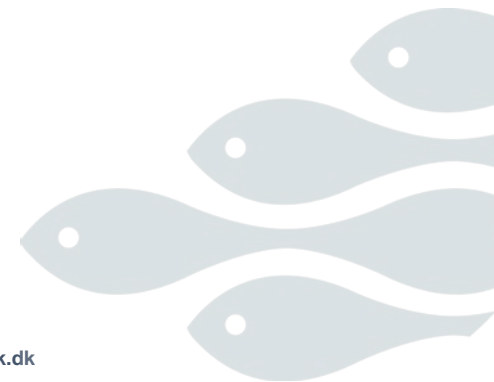
- Each area with area specific management objective (Biomass reference point),
- Based upon larvae drift simulation and best assessment.



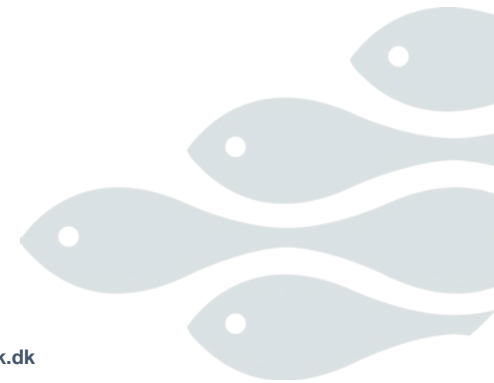
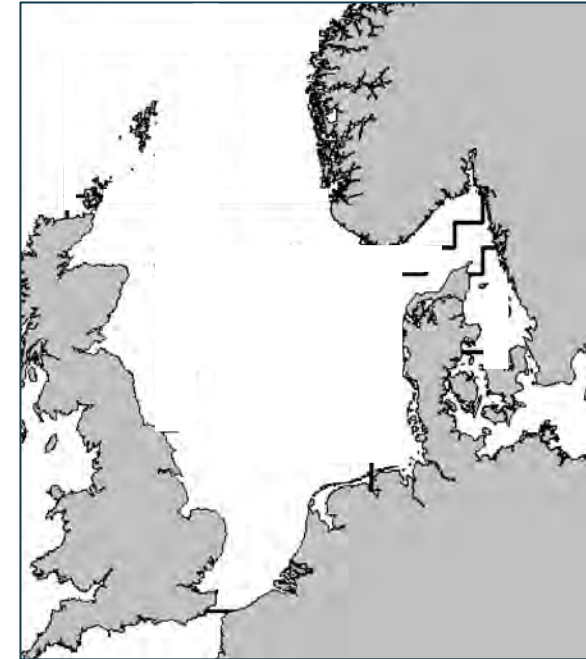
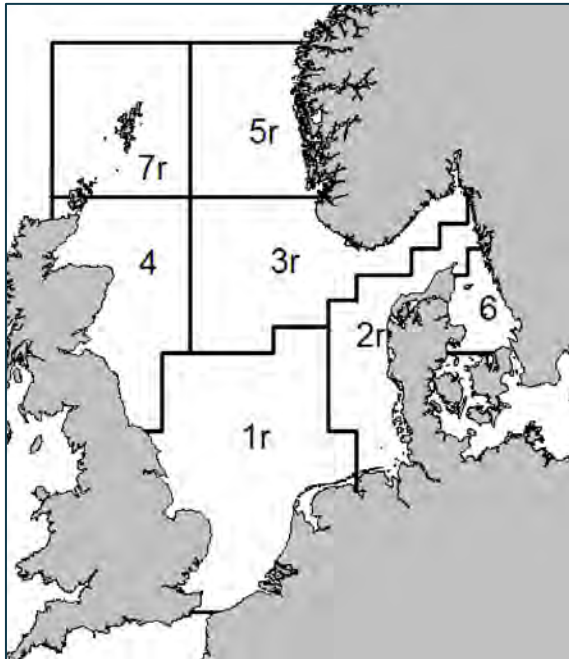
Fishery



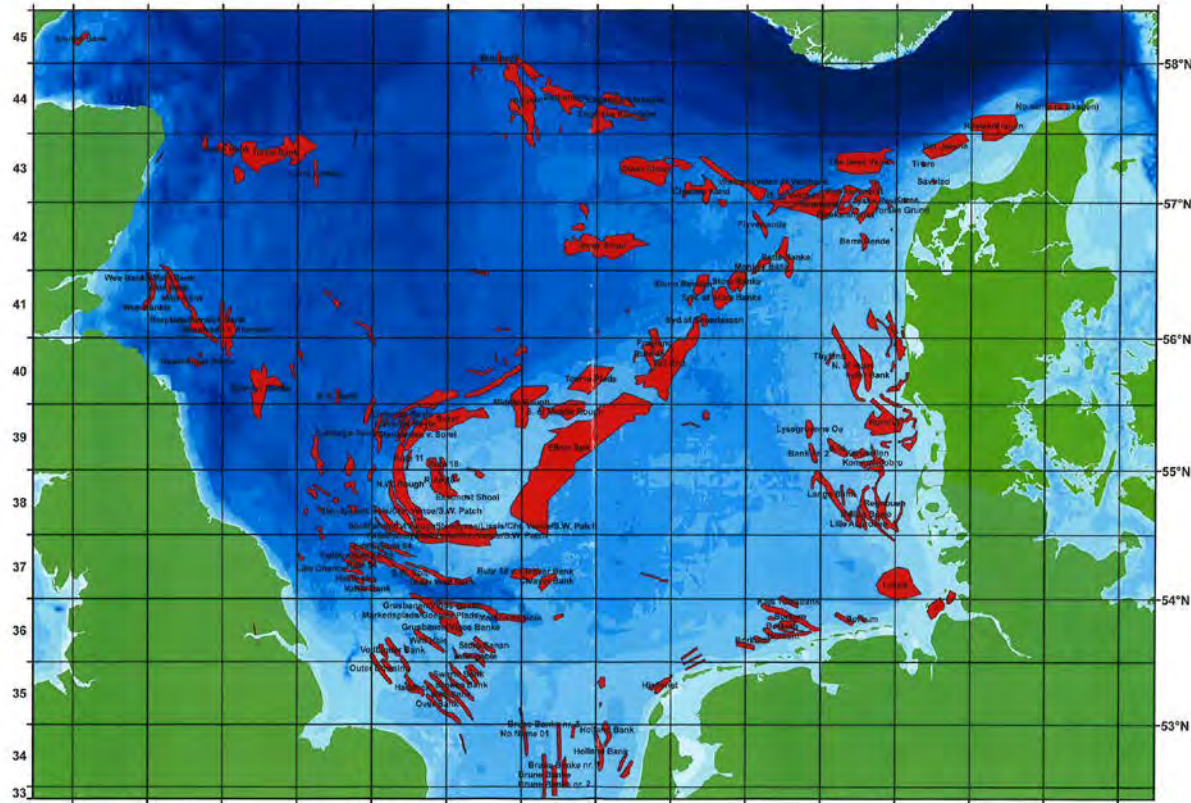
- Inflexible fishery,
- One fleet several TAC's
- Has changed the dynamic in the fishery,
- Increased effort



Present management

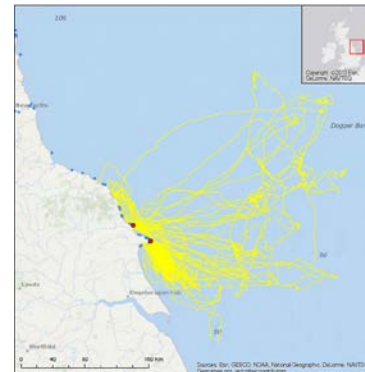
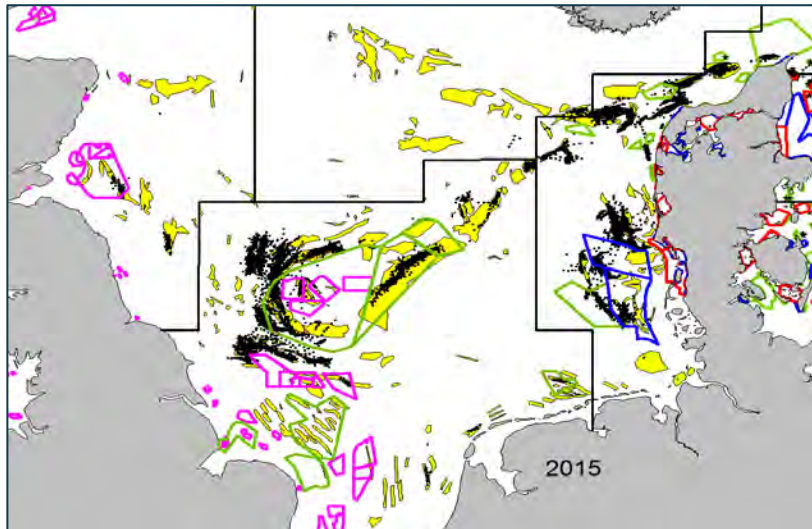


Spatial based management



Spatial based management

- Fishery can fish the TAC where they prefer,
- Prioritize areas serving as sources of recruitment (source/sink),
- Include areas already closed for fishery (windfarms, conservation areas),
- Prioritize areas close to bird population,



From Bob Furness





Thank you