

Vertical distribution and reproductive aspects of caridean shrimps in the deep-water of the East Sea, Korea

PUKYONG NATIONAL UNIVERSITY
DEPARTMENT OF MARINE BIOLOGY

HYE-MIN PARK

Contents



1. Introduction



2. Materials and Methods



3. Results



4. Discussion



3-1

Distribution of shrimps by depth

3-2

Reproductive pattern

Introduction – Distribution

Distribution may depend on a variety of environmental factor (Boschi, 2000).



Depth is a multicomponent factor related to the major biotic and abiotic gradients found in the ocean (Company and Sarda, 1997).

Introduction – Effects of depth

As their own reproductive strategy of each species, distribution will be able to vary according to **sex and stage of development**.



by depth



Sex ratio

As a function of depth reflects differential migration between sexes, related to egg incubation and hatching (Abello and Cartes, 1992).

Reproductive behaviour

Migration be related to the physiological demands for copulation and spawning (Castilho et al., 2008).

Purpose of this study

Shallow water

The wealth of information on the distribution



Deep water

Much less information on the distribution

I

The first aim of the present paper is to reveal the distribution pattern, as well as the differences in the size structure of their populations related to depth.

II

The other aim is to compare the reproductive traits of deep-sea shrimp through distributions among 4 species.

Characteristics of 4 species

Of 14 species (4 in the Hippolytidae, 3 in the Pandalidae and 7 in the Crangonidae) found in the study area the four dominant shrimps was used to examine (Kim and Kim, 1997; Cha et al., 2001).

Family Crangonidae *Neocrangon communis* (Rathbun, 1899)

Argis toyamaensis (Yokoya, 1933)

Family Pandalidae *Pandalus eous* Makarov, 1938

Family Hippolytidae *Eualus biunguis* (Rathbun, 1902)

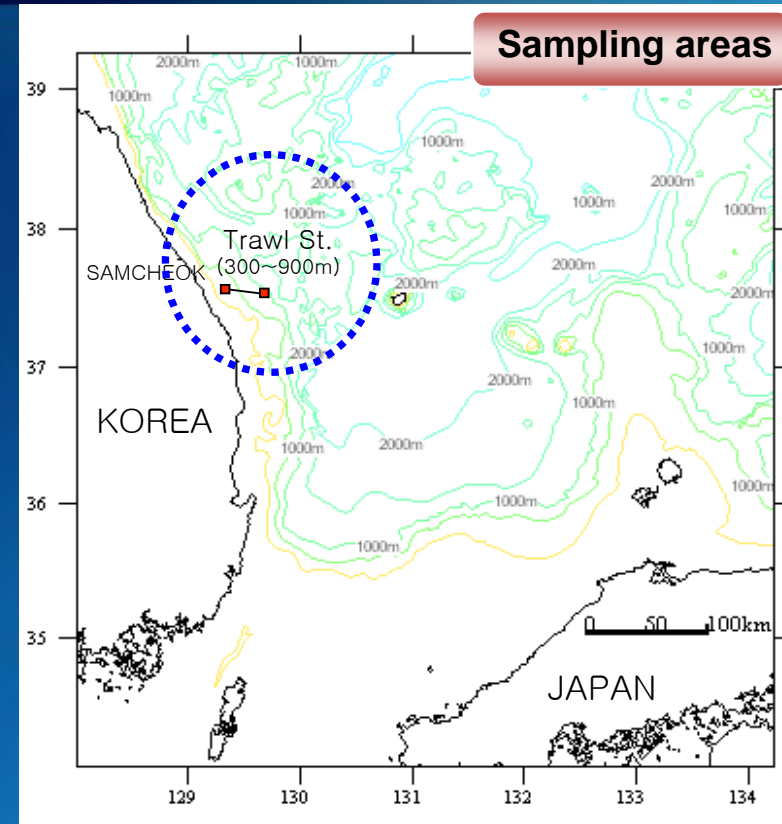


Materials and Methods

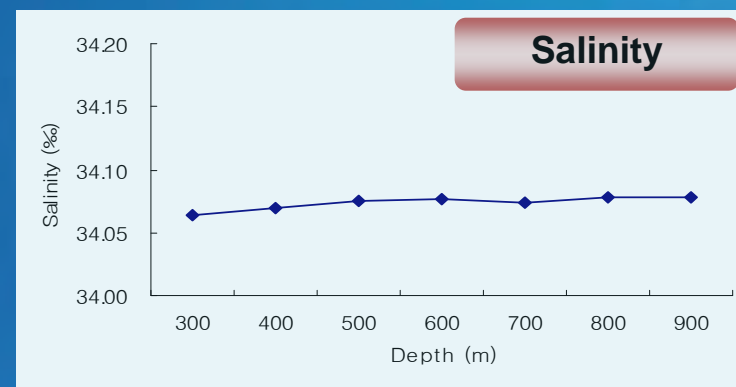
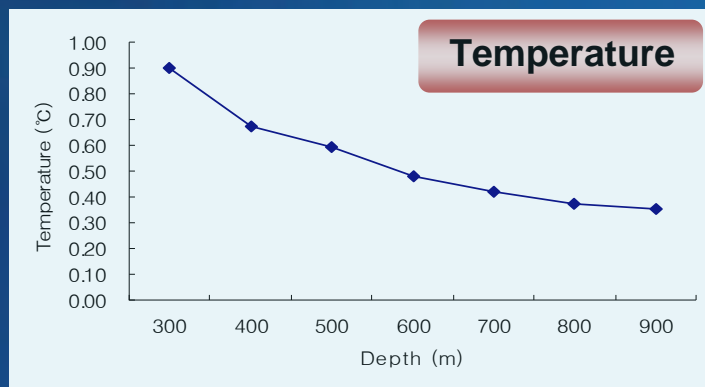
Sampling

Four species were collected from East sea off Samcheok (37°22'N 129°19'E, 37°36'N 129°47'E)

2004 → June, December
2005 → May, November
2006 → March, September
2007 → April, October
2008 → June, November



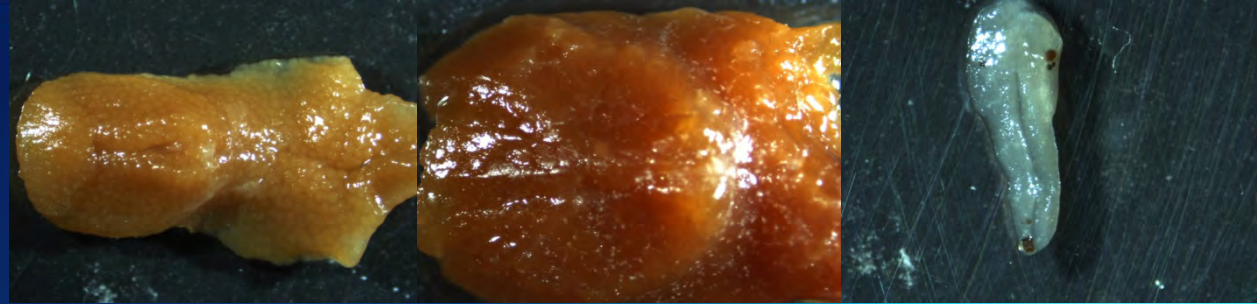
Temperature : 0.90°C (300m) ~ 0.35°C (900m)



Materials and Methods

Ovary examination

1. Immature (Stage 1)
2. Maturing (Stage 2)
3. Ripe (Stage 3)
4. Spent (Stage 4) (Meredith,1952)



GSI= Ovarian dry weight / (Body dry weight-Ovarian dry weight) x 100

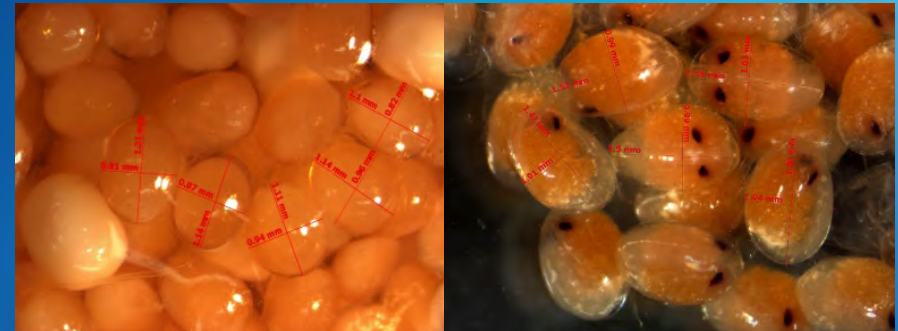
Egg size $\frac{4}{3} \pi r_1 r_2^2$

Where r_1 is half the major axis and r_2 half the minor axis.

Statistical analysis

- Chi - square test
- Kolmogorov - Smirnov two sample test
- Analysis of variance (ANOVA)
- Kruskal - Wallis test
- Analysis of covariance (ANCOVA)

Statistical analyses were accomplished in MINITAB
Version 12 and SYSTAT Version 10.





3. Results

3-1

Distribution of shrimps by depth

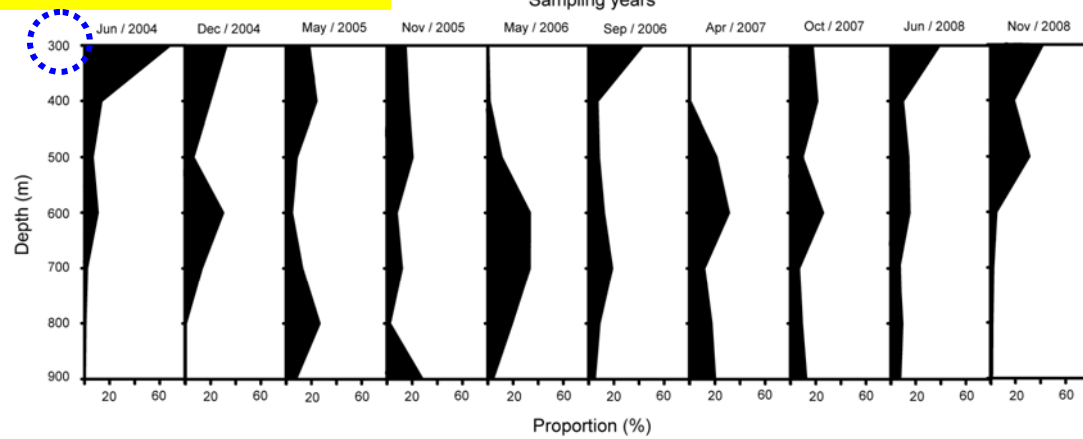


Depth distribution

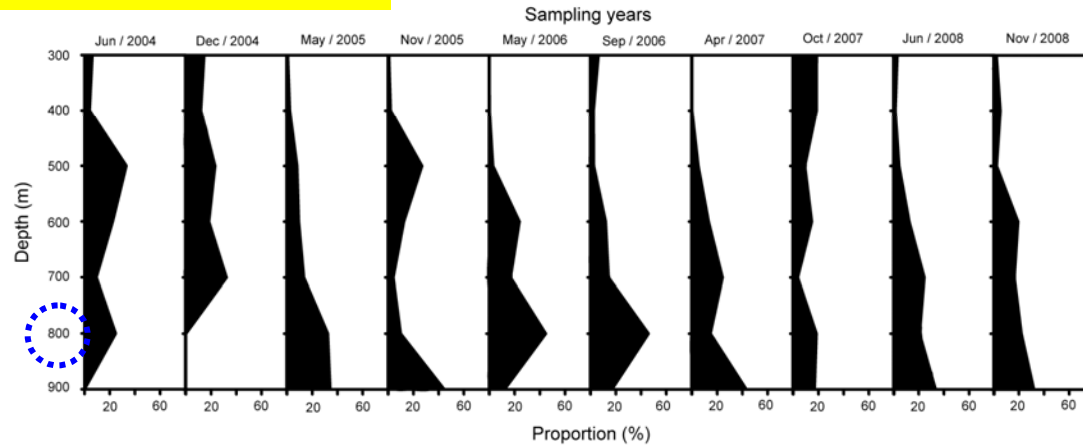
Sex ratio by depth

Length frequency distribution

N. communis

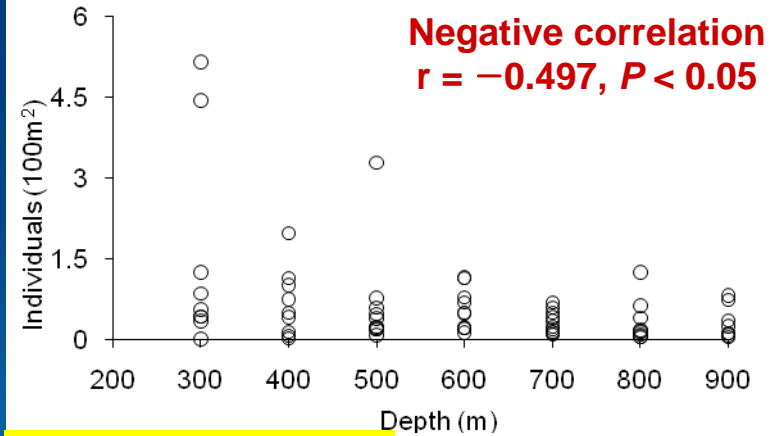


A. toyamaensis

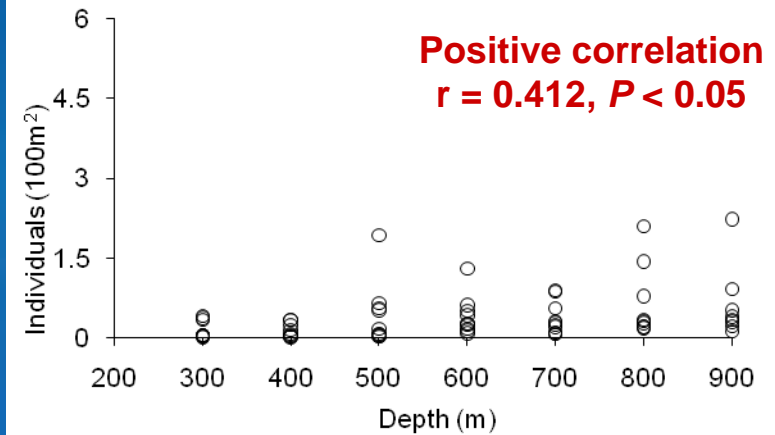


< Proportion of individuals with depth >

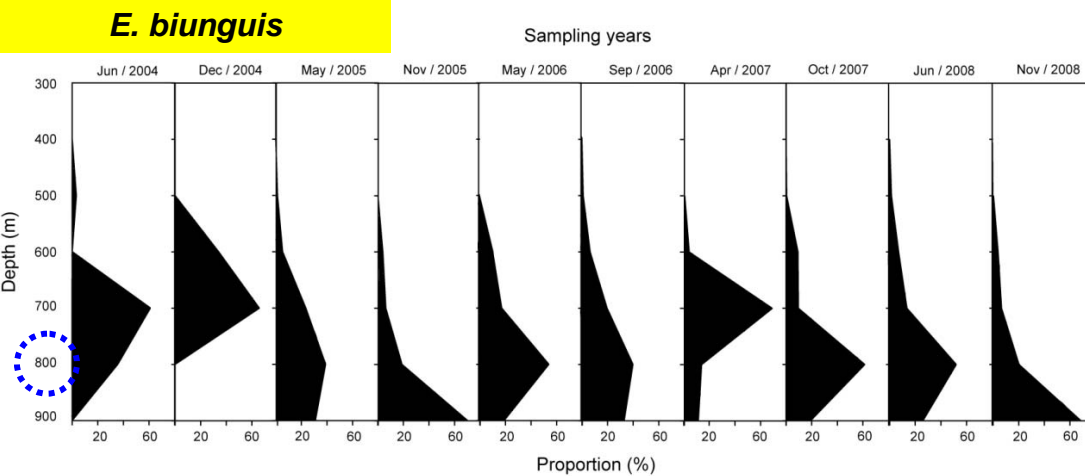
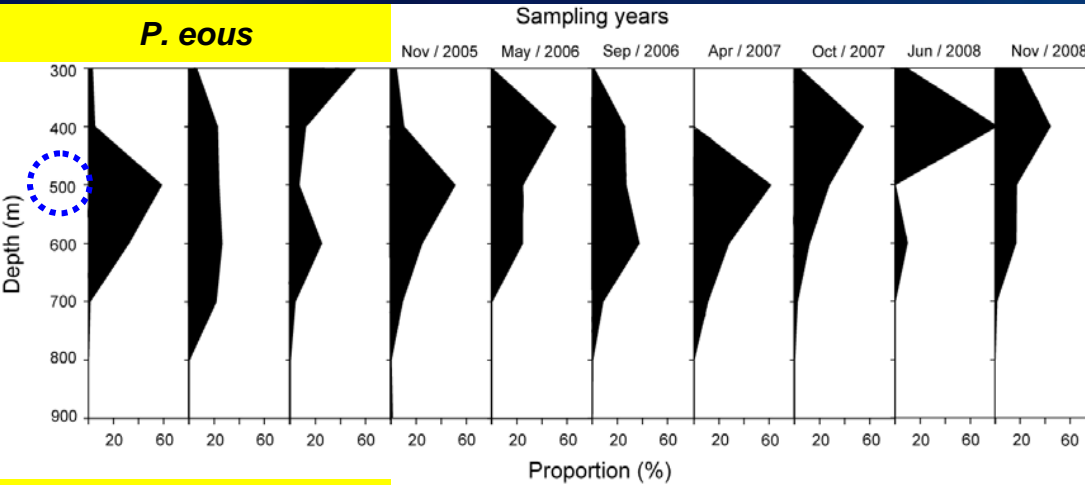
N. communis



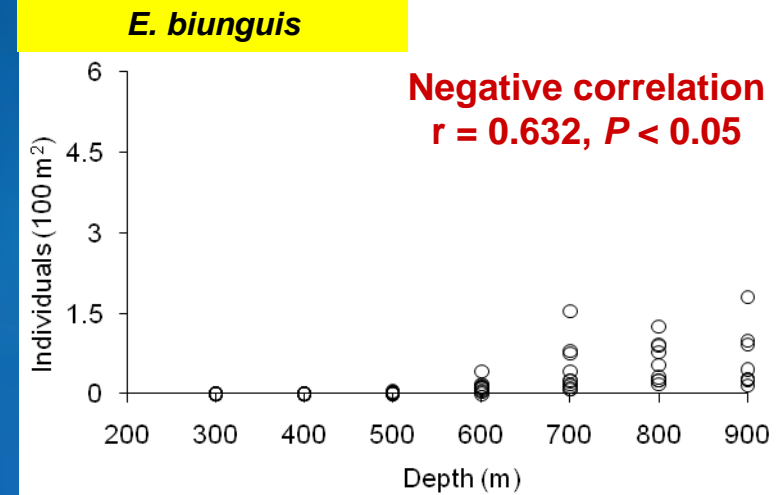
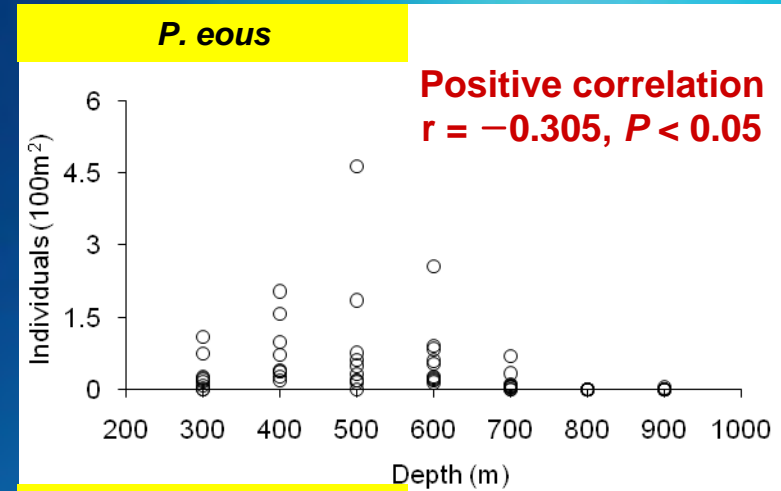
A. toyamaensis



< Correlation between the abundance and depth >



< Proportion of individuals with depth >

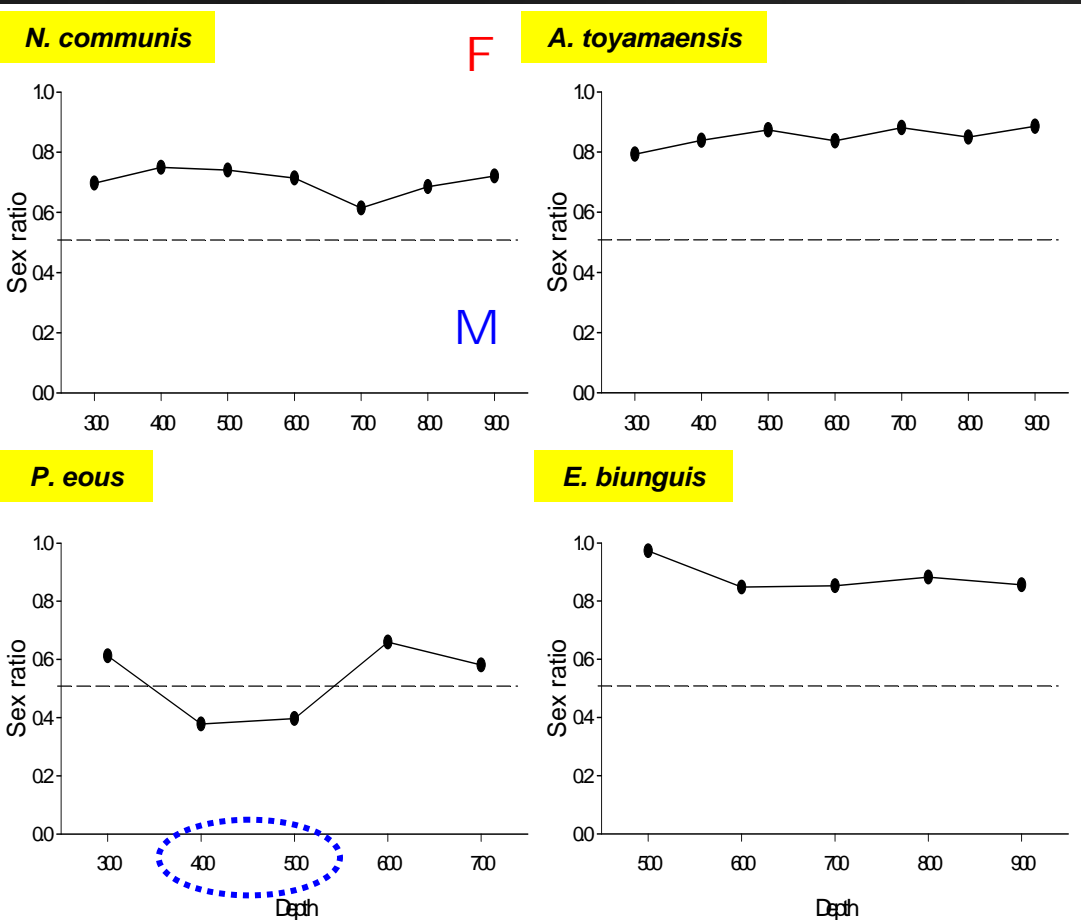


< Correlation between the abundance and depth >

Results

Sex ratio by depth

- A significant difference in sex ratio by depth of 4 species (Chi - square test, $P < 0.05$).



- Predominance of females

at all depth range

in *N. communis* (61.47 % ~ 74.94 %)

in *A. toyamaensis* (79.28 % ~ 88.55 %)

in *E. biunguis* (84.80 % ~ 97.25 %)

- Overall sex ratio of *P. eous* was male dominant unlike other species in 400 m ~ 500 m depth.

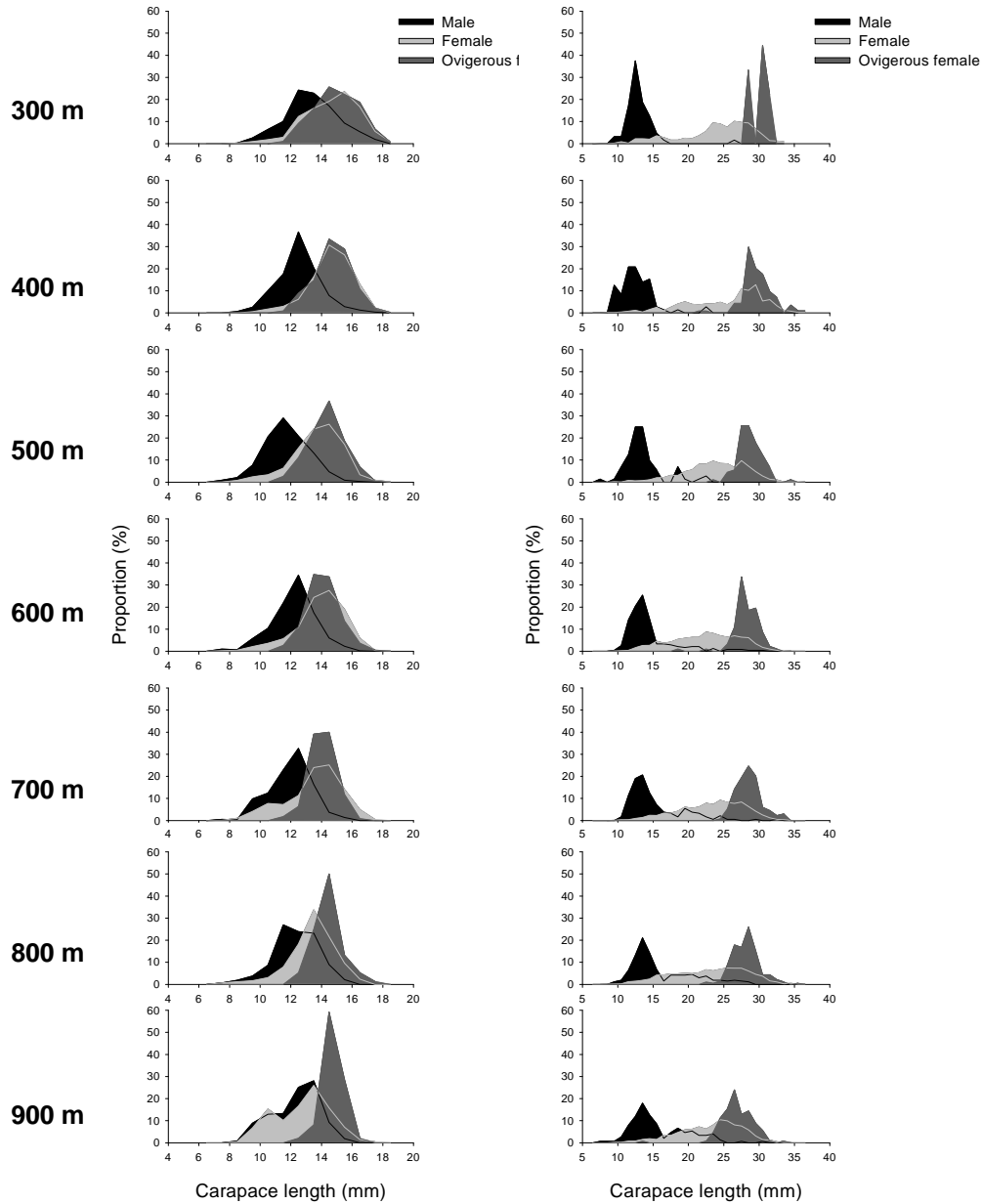
Results

Length frequency distribution



N. communis

A. toyamaensis



N. communis

Largest male, female, ovigerous female distributed at 300 m.

Female : Decreasing size with depth.

A. toyamaensis

Male : Increasing size with depth.

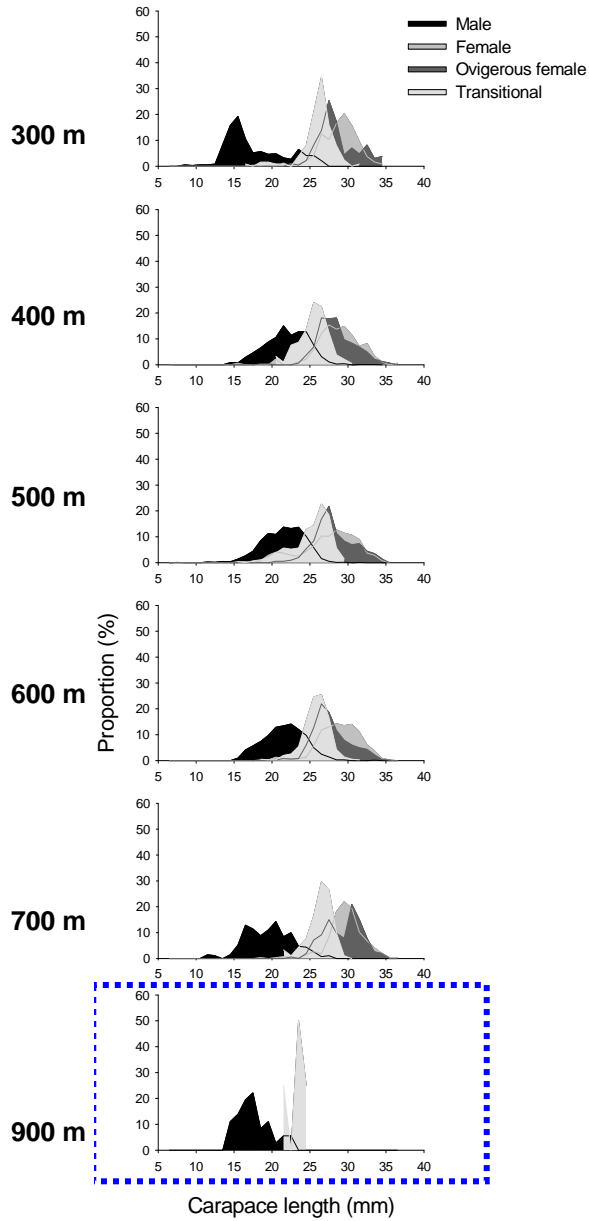
Female, ovigerous female : Decreasing size with depth.

Results

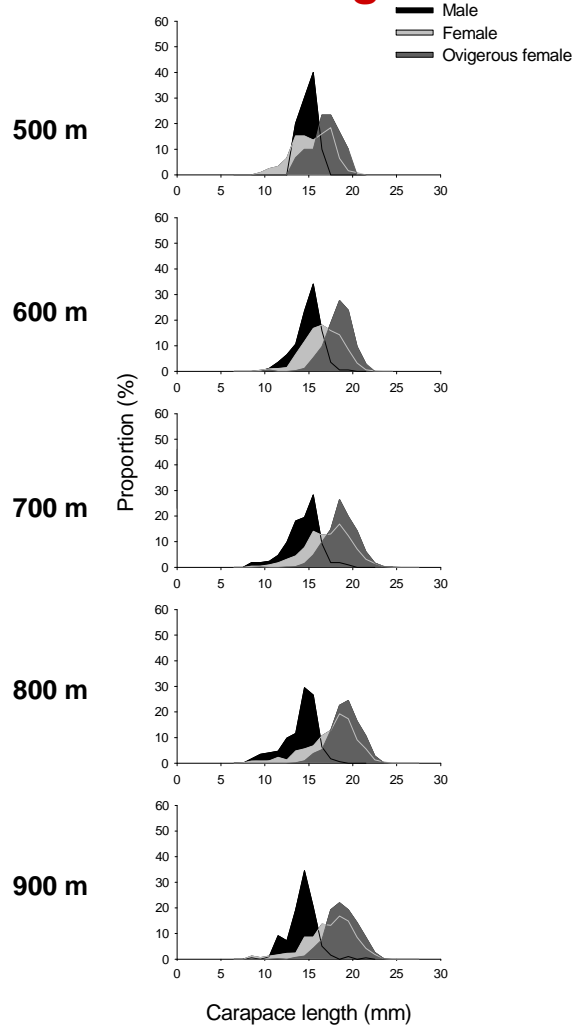
Length frequency distribution



P. eous



E. biunguis



P. eous

Male : Decreasing size with depth

Largest individuals of transitional, female and ovigerous female → 700 m



E. biunguis

Female, ovigerous female : Increasing size until 800m depth.

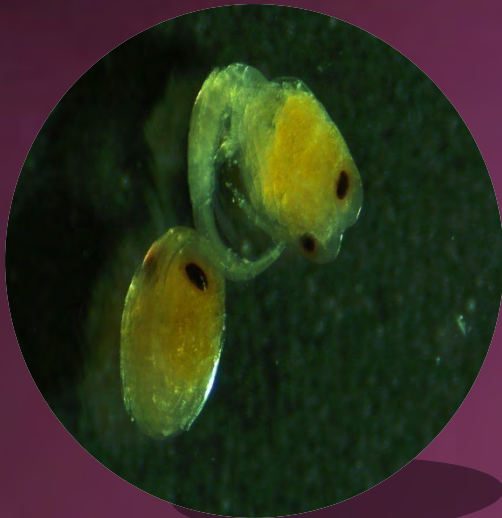
← Small number of individuals were caught.



2. Results

3-2

Reproductive pattern



Distribution in winter season

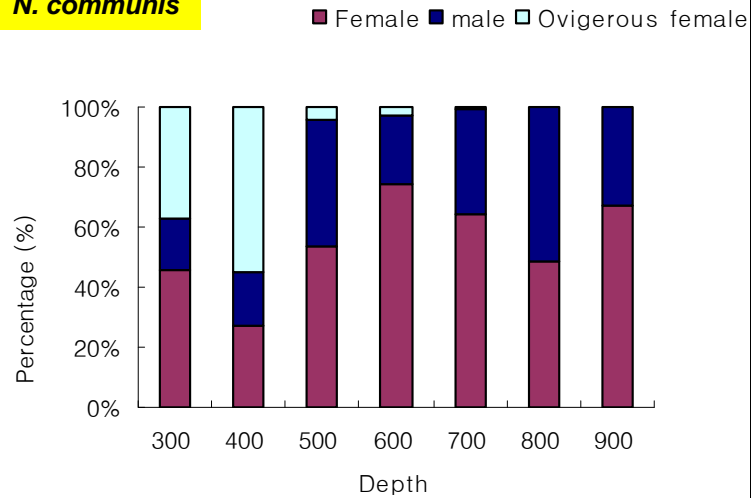
Reproductive characteristics

Egg size

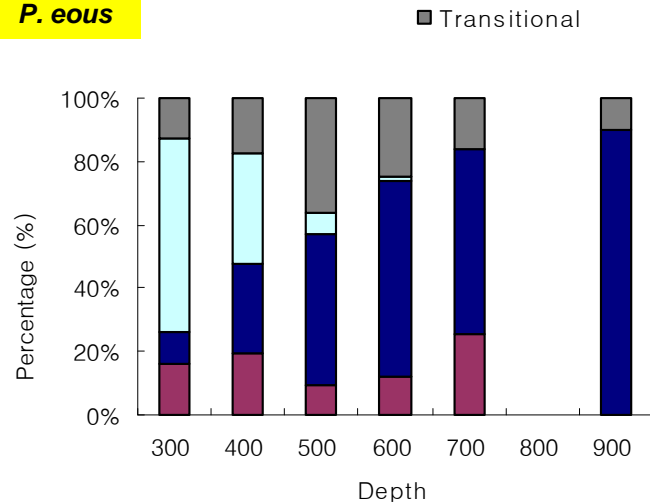
Results

Distribution in winter season

N. communis



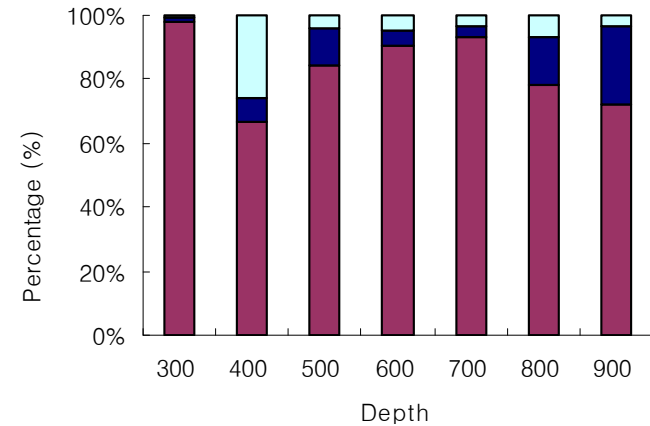
P. eous



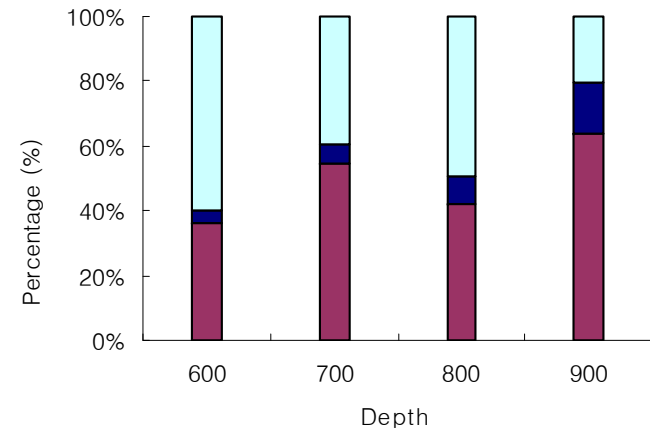
Shallow - dwelling species

Ovigerous female mainly distributed at shallow water around 300 ~ 400 m depth.

A. toyamaensis



E. biunguis

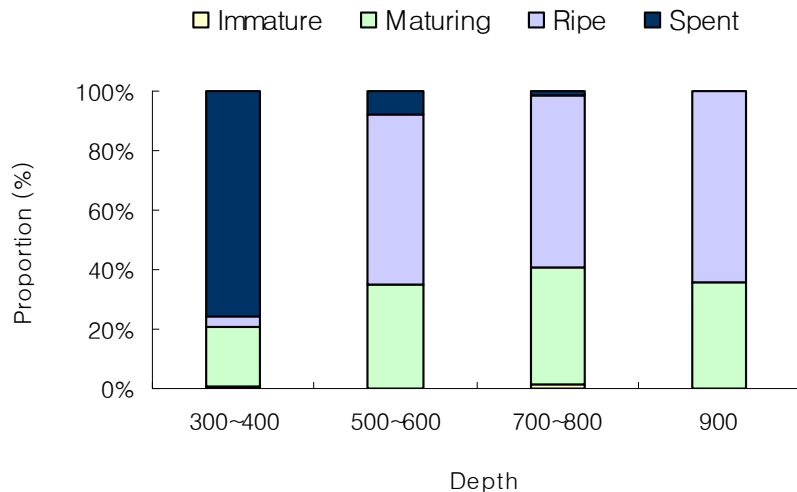


Deep - dwelling species

Ovigerous female distributed from 300 m to 900 m depth (all depth range).



Ovary stage



Family Crangonidae - *N.communis*

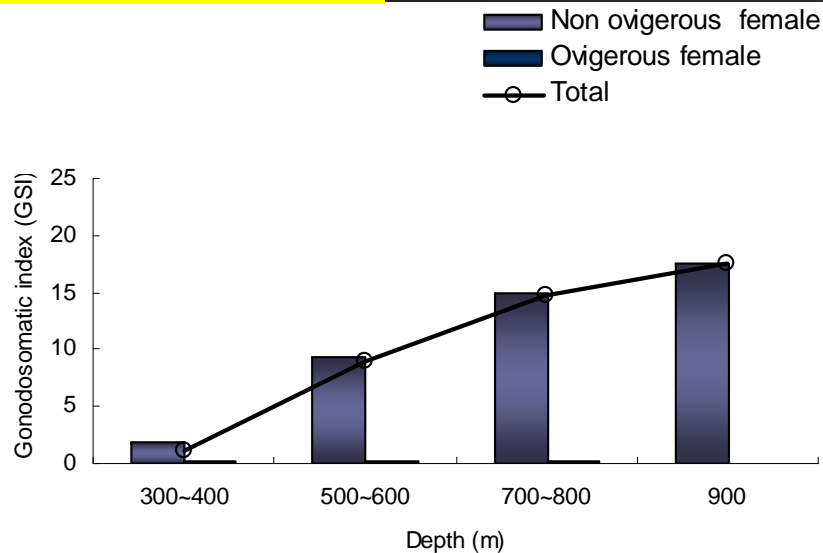
1. Females with spent stage ovaries distributed in shallow depth range (75.51 %), decreased with depth.

2. Females with ripe stage ovaries distributed at deepest depth.

3. Ovarian development and GSI significantly increased with depth.

4. The GSIs differed significantly with depth (K - W test, $P < 0.05$).

GSI



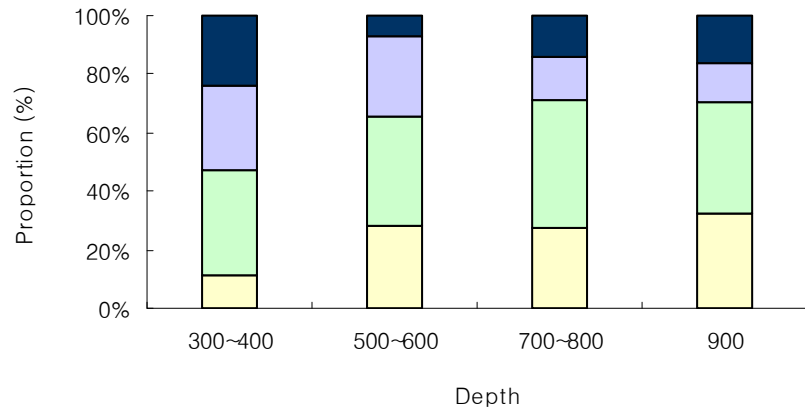
Results

Reproductive characteristics



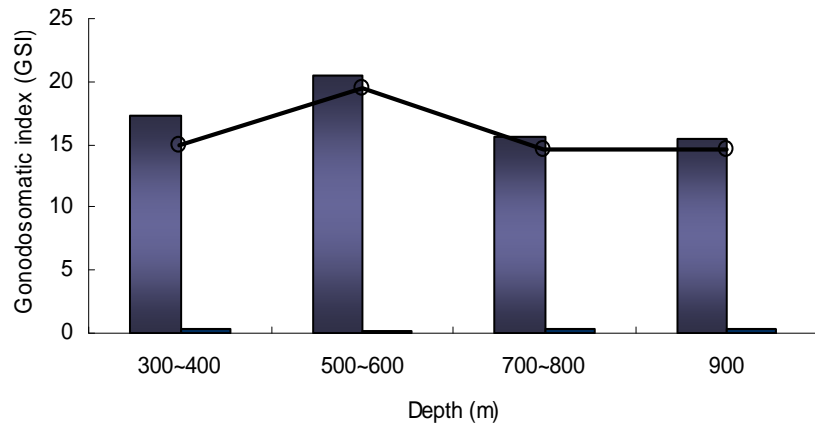
Ovary stage

Immature Maturing Ripe Spent



GSI

Non ovigerous female
Ovigerous female
Total



Family Crangonidae - *A. toyamaensis*

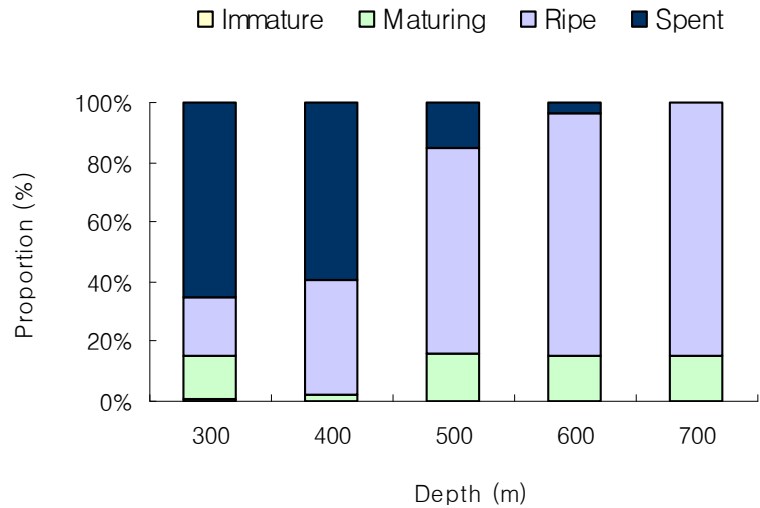
1. Females with ripe stage ovaries uniformly distributed over all depth.
2. The GSIs were not significantly different with depth (K - W test, $P > 0.05$).

Results

Reproductive characteristics



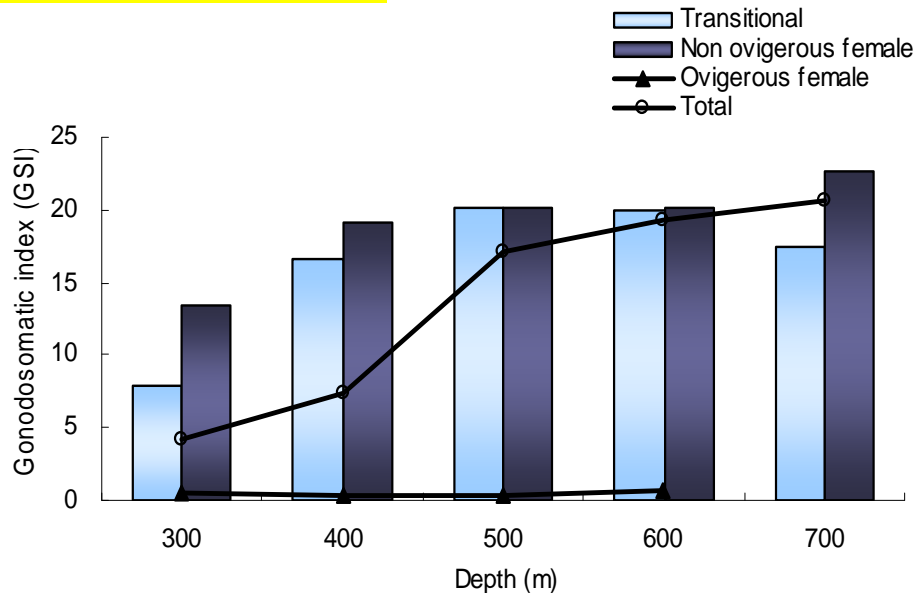
Ovary stage



Family Pandalidae - *P. eous*

1. Decreased proportion of spent ovaries stage with depth implies that ovigerous females mainly distributed in shallow water.
2. Females with ripe stage ovaries and GSI increased with depth, immature female has rarely appeared.
3. The GSIs differed significantly with depth (K - W test, $P < 0.05$).

GSI



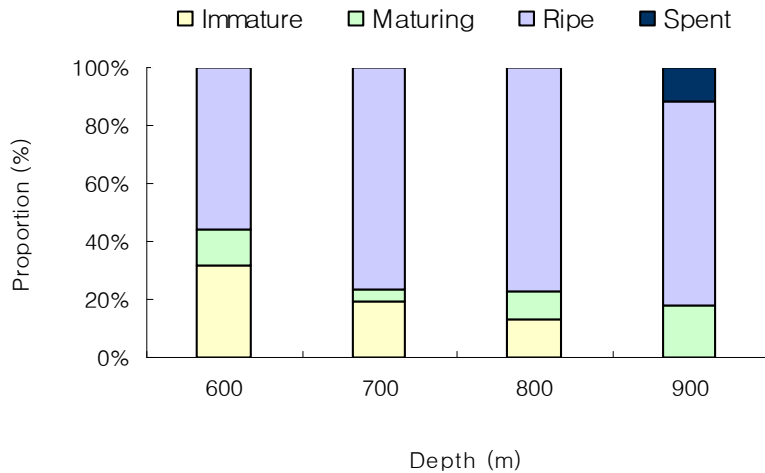
Results

Reproductive characteristics



Ovary stage

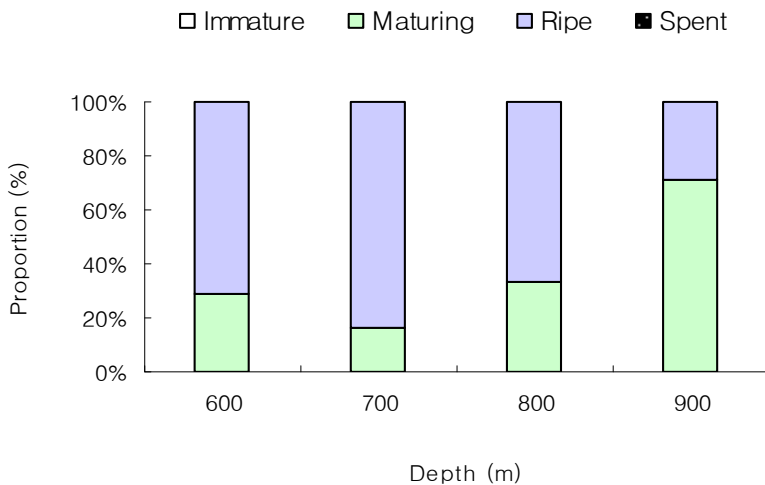
<Non - ovigerous female>



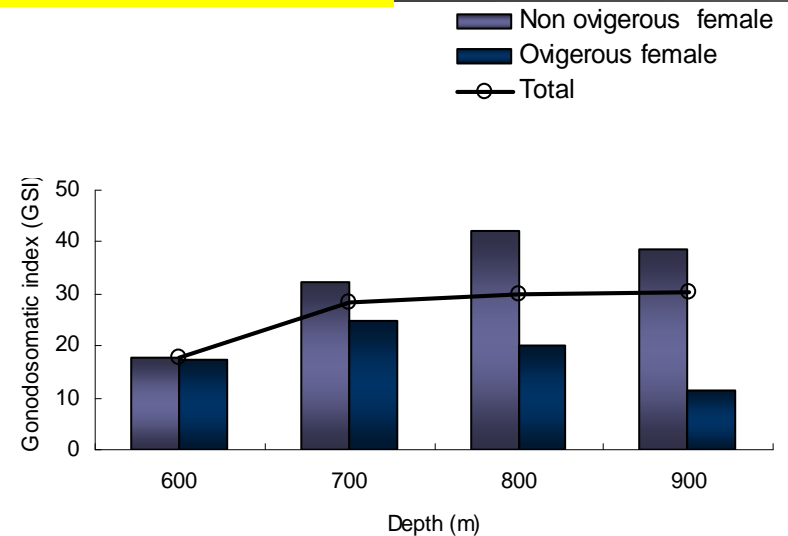
Family Hippolytidae - *E. biunguis*

1. Proportion of ovigerous female with ripe stage ovaries was highest at 700 m depth.
2. The GSIs differed significantly with depth (K - W test $P < 0.05$).

<Ovigerous female>



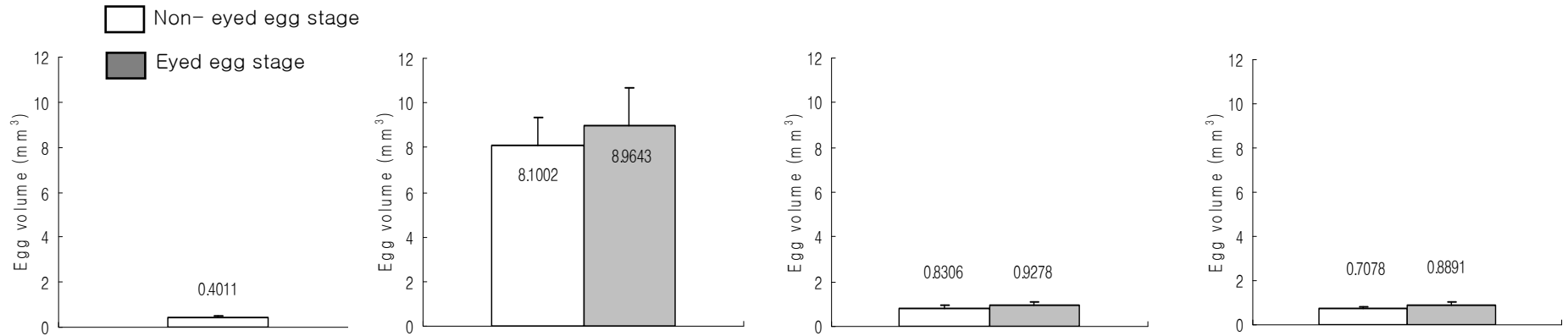
GSI



Results

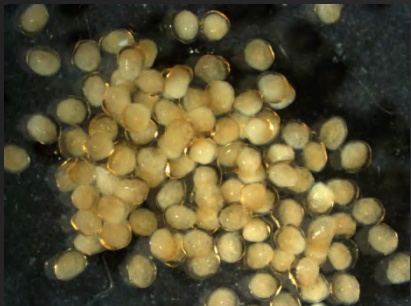
Egg size

Egg volume was significantly different between species (K - W test, $P < 0.001$).



Females with eyed egg stage did not appear during winter season

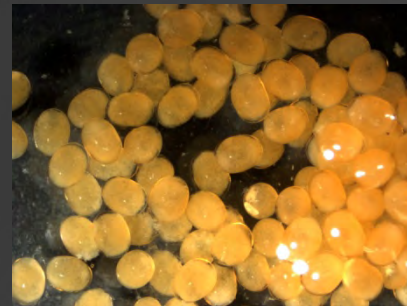
Non eyed stage : 0.4011 mm³



Non eyed stage : 8.1002 mm³
Eyed stage : 8.9643 mm³



Non eyed stage : 0.8306 mm³
Eyed stage : 0.9278 mm³



Non eyed stage : 0.7078 mm³
Eyed stage : 0.8891 mm³



Discussion

Distribution



N. comminus



P. eous

Shallow-dwelling species



A. toyamaensis



E. biunguis

Deep-dwelling species

Internal factors

External factors

**Distribution in
deep sea
environment**

Food resources are limited for species of similar morphology and trophic habitat



**Segregation
by depth**

An adaptation that allows co-existence in deep water shrimps

(Company and Sarda, 1997)

Discussion

Sex ratio by depth



Female dominant in all depth



Male dominant at 400 - 500 m depth

Politou(2008) confirmed the primordial role that depth plays in the distribution of different life stage of deep-water shrimps.

The average depth of distribution of *P. eous* increases with the advance of sexual stage (Maeda and Nishiuchi, 1999).

Size Segregation

Size segregation by depth in 4 species may have originated from the difference of either longevity or growth rate related to food conditions or physiological mechanism of growth (Ohtomi, 1997).

Discussion

Reproductive pattern in winter seasons



N. Communis



P. eous

Shallow-dwelling species

Ovigerous female and non-ovigerous female with spent ovaries stage distributed at shallow water depth.

❖ A number of species do show pre-hatching migration (Hazlett, 1983).

❖ Vertical migration common to many species serve not only for feeding, and locating in the preferred environment for survival, but also for locating mates for breeding purposes (Sastry, 1983).

Discussion

Reproductive pattern in winter seasons



A. toyamaensis



E. biunguis

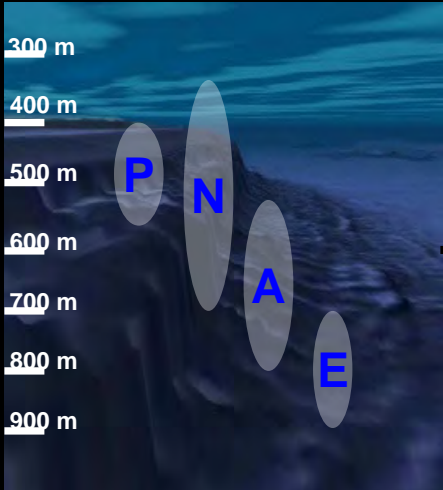
Deep-dwelling species

These two species did show that ovigerous females were widely distributed in all depth ranges.

❖ The decrease in larval survival probabilities with increasing depth is offset by laying larger eggs by shrimp species in deeper water and these risks of survival are reduced by the production of larger eggs in deeper water species (King and Butler, 1985).

❖ Species with continuous brooding throughout a breeding season can maximize their egg production (Oh and Hartnoll, 2004)

In conclusion

ZCM	Species	Egg size (Non eyed stage)	Ovi CL (mm)
	<i>N. comminus</i>	0.4011 mm ³	14.05~14.98
	<i>A. toyamaensis</i>	8.1002 mm ³	26.86~30.15

Shallow-dwelling species

Deep-dwelling species

(The biology of crustacea vol.8, 1983)

❖ Our results showed that these four species have adapted different reproductive strategies by depth.

❖ Under the deep water of the East Sea, Korea, **optimal vertical distribution** have close relationship with **reproductive strategies** for these four species related to survival efficiency.

Thank you