

# Consumption of salmon fingerlings by Rhinoceros Auklets breeding in Hokkaido, Japan

Junpei Ookado<sup>1</sup>, Yutaka Watanuki<sup>1</sup>, Motohiro Ito<sup>2</sup>, Makoto Hasebe<sup>3</sup>, and Hideaki Kudo<sup>1</sup>

<sup>1</sup>Graduate School of Fisheries Sciences, Hokkaido University: [ywata@fish.hokudai.ac.jp](mailto:ywata@fish.hokudai.ac.jp)

<sup>2</sup>Atomoshere and Ocean Research Institute, The University of Tokyo

<sup>3</sup>Hokkaido Seabird Conservation and Research Group

52°

Migration of  
chum salmon  
fingerlings and  
location of  
colonies of  
Rhinoceros  
Auklets

52°

1<sup>st</sup> year  
wintering  
ground

48°

Oyashio

Todojima

Teuri

Kojima

Daikoku I

44°

44°

Tsushima

40°

40°

Kuroshio

36°

36°

# No. of breeding pairs of Rhinoceros Auklets in Hokkaido

<b>Colony</b>	<b>No of burrows</b>	<b>No of pairs</b>	<b>References</b>
Daikoku I, Akkeshi	74,000	59,200	Okado 2016
Teuri I, Haboro	415,441	332,353	Monitoring 1000
Kojima, Matsumae	84,000	67,200	Monitoring 1000
Todojima, Rebun I	35,086	28,069	Hasebe, Senzaki 2016

# Sampling diet

Bill-load  
(diet of chicks)

Stomach contents  
(diet of adults)





## Bill-loads

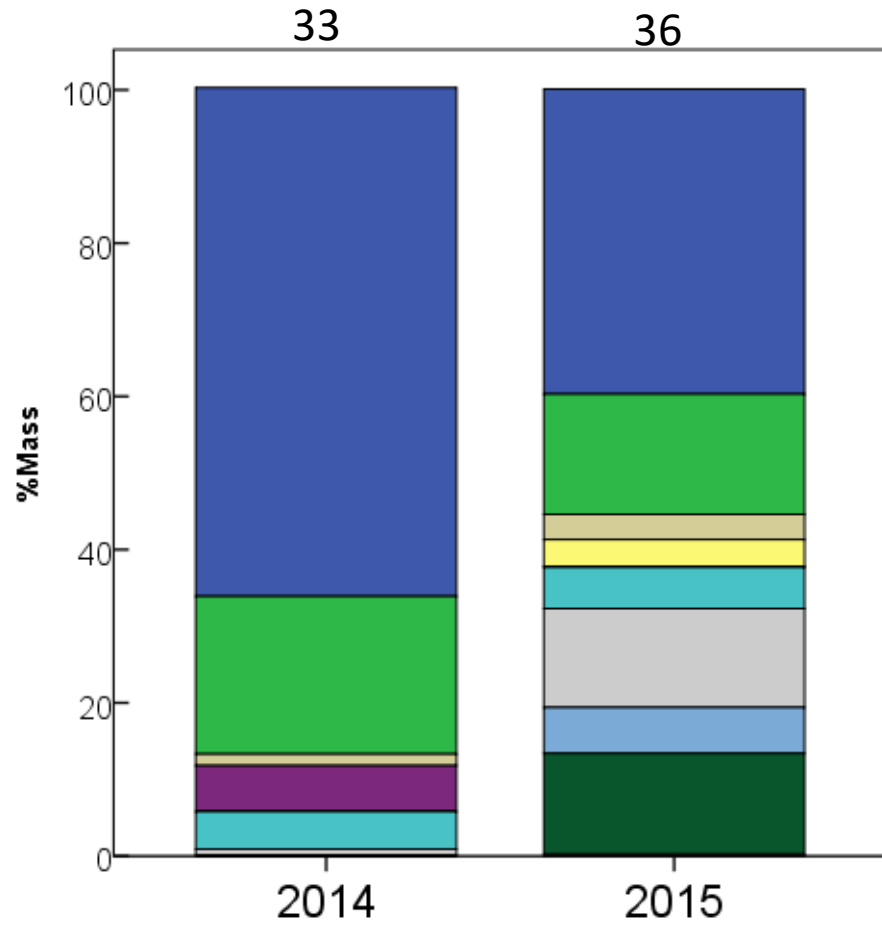


## Stomach contents

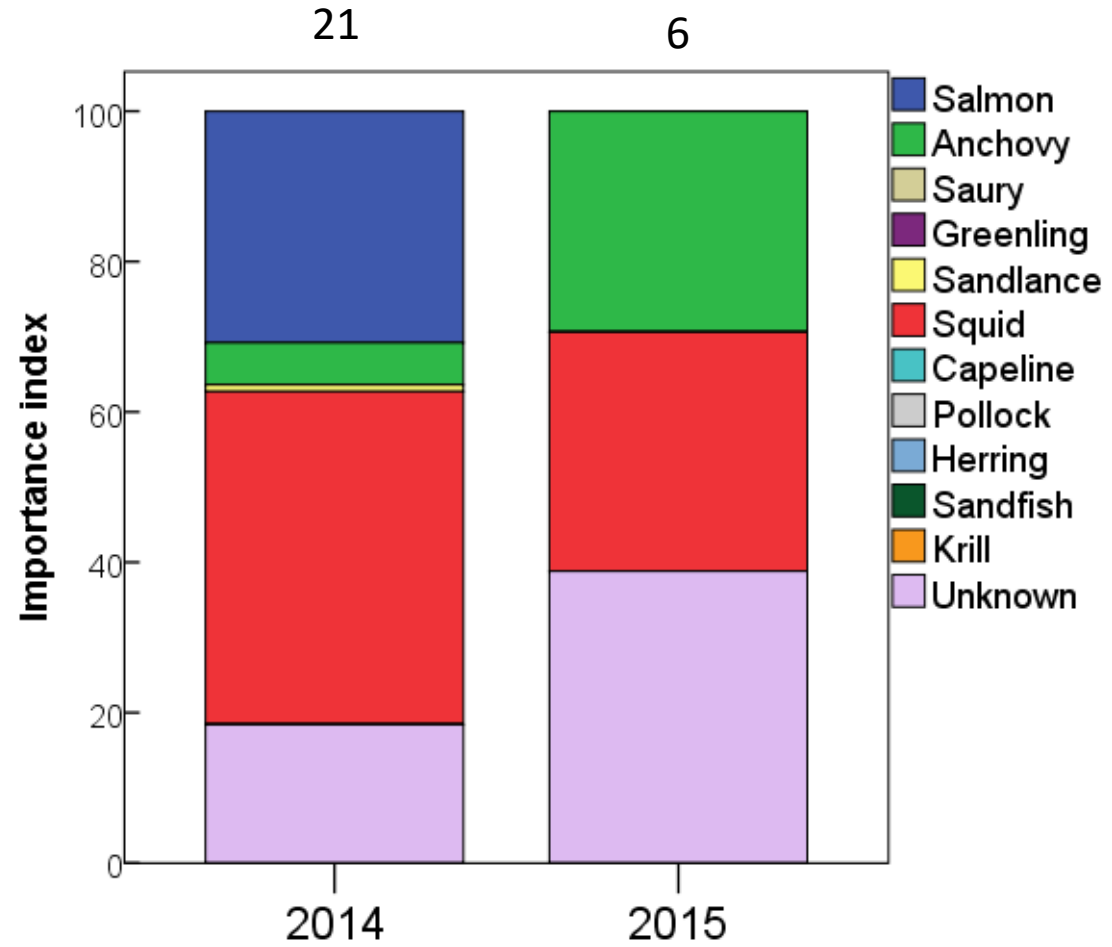


# Daikoku Island, diet composition

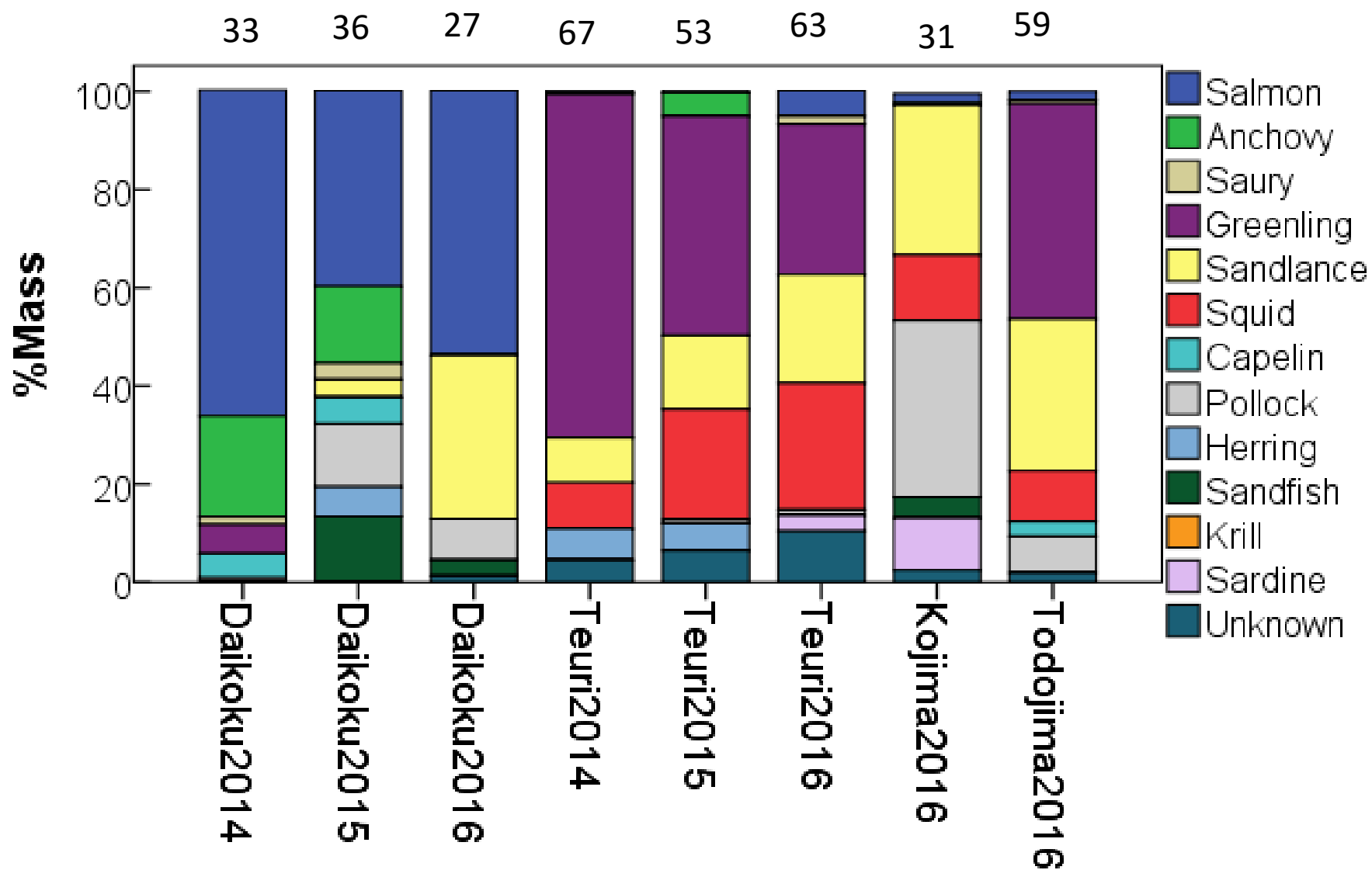
## Chicks



## Adults



# Prey composition in chick diet



# Size of fingerlings in bill-load of RHAU

