

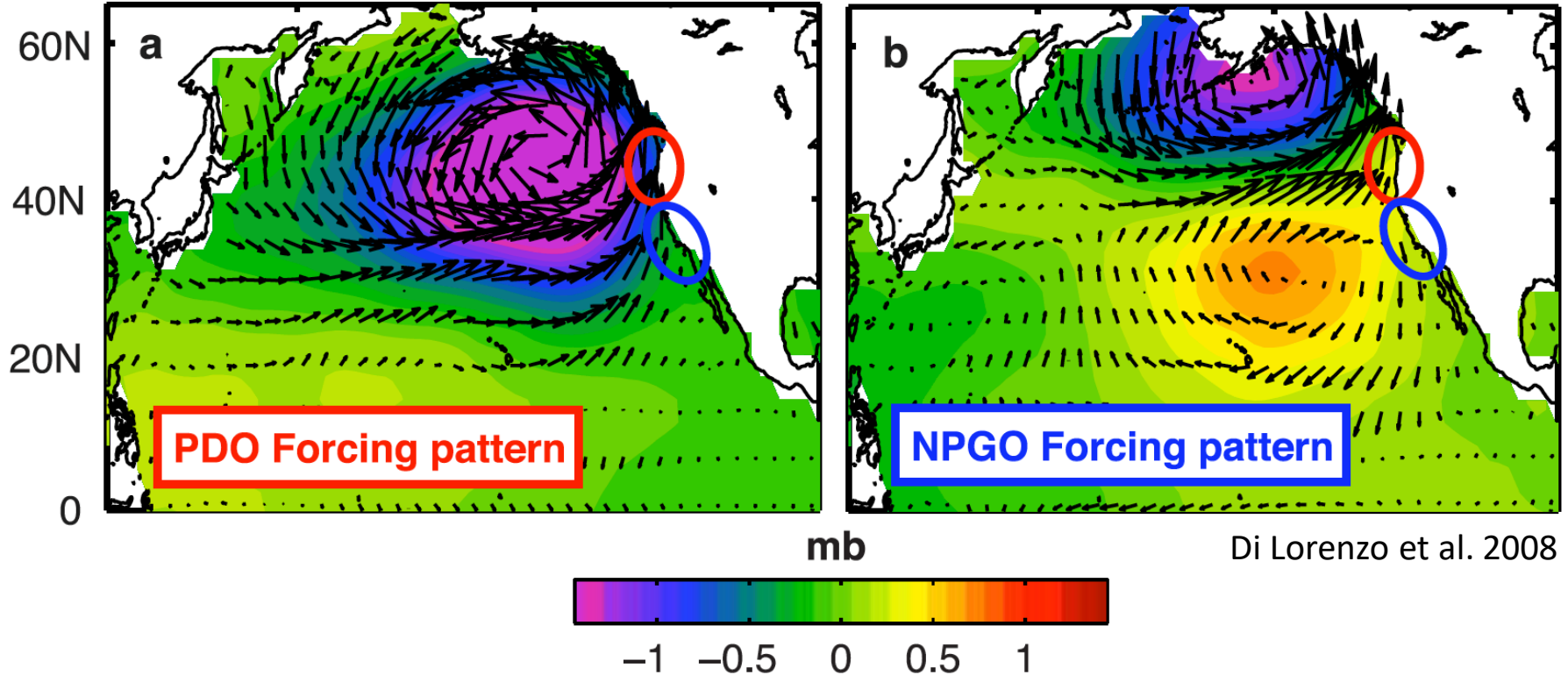
The changing
physical and
ecological meanings
of North Pacific
Ocean climate
indices

Michael Litzow^{1*}, Mary Hunsicker², Nicholas Bond³, Brian Burke², Curry Cunningham¹, Jennifer Gosselin⁴, Emily Norton³, Eric Ward² and Stephani Zador⁵

¹University of Alaska Fairbanks, ²NOAA Northwest Fisheries Science Center, ³Joint Institute for Study of the Atmosphere and Oceans, ⁴University of Washington, ⁵NOAA Alaska Fisheries Science Center

*mlitzow@alaska.edu

The “canonical” view: PDO & NPGO track fixed atmosphere-ocean interactions

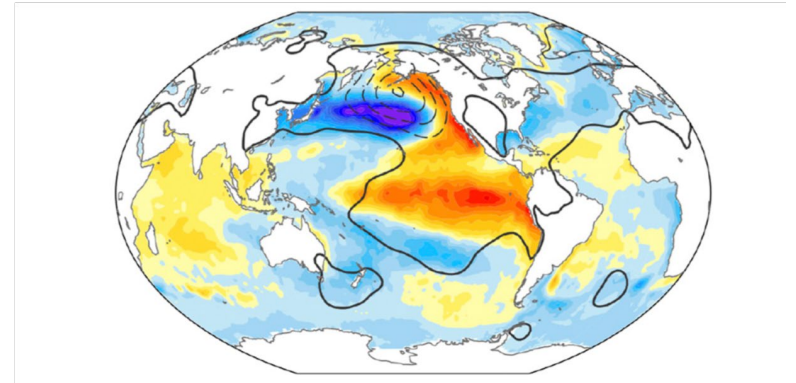


Multiple Processes drive the PDO (and the NPGO)

Newman et al. 2016, J. Clim.

For the PDO:

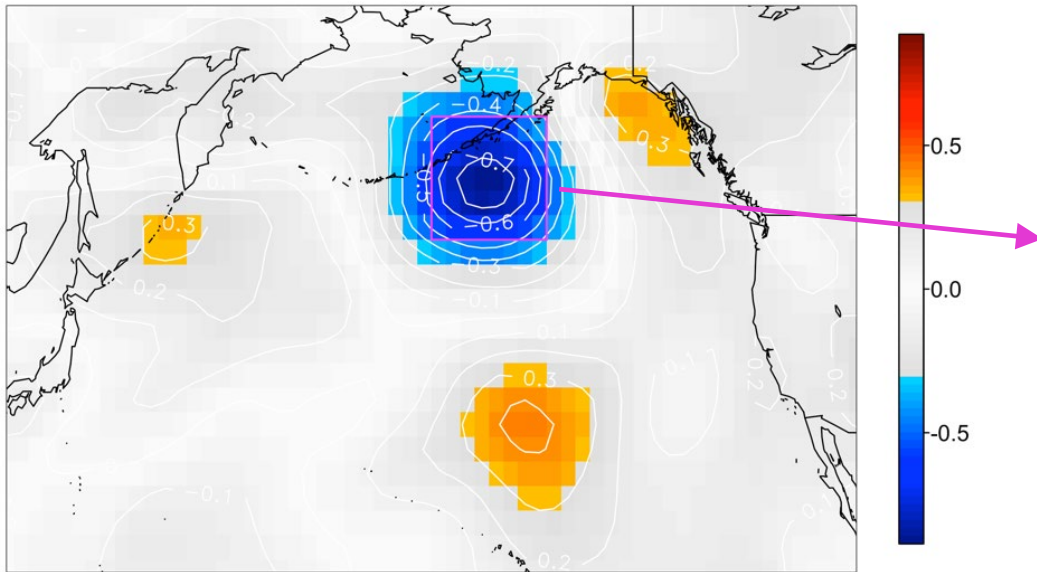
- Aleutian Low
- Teleconnections from the tropics
 - Atmospheric bridge
 - Coastally trapped waves
 - Tropical decadal variability
- Midlatitude ocean dynamics
 - Reemergence
 - Gyre dynamics
 - Air-sea feedbacks
 - Extra-tropics to tropics feedback



Aleutian Low variance *declined* in the late 1980s

Spatial Pattern

Standard deviation (hPa): (1989:2012) - (1988-1950)

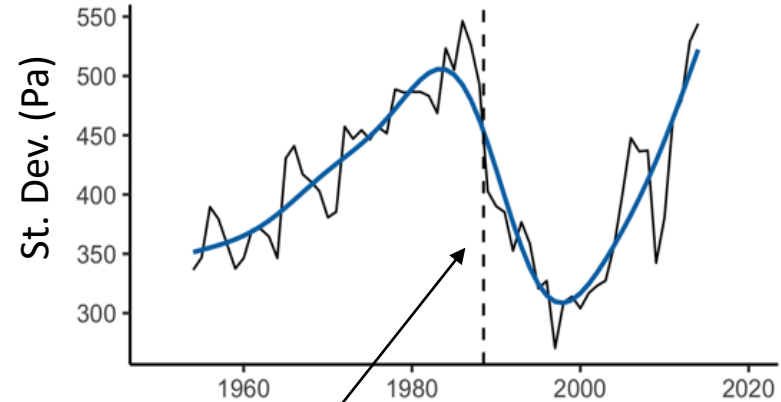


NCEP/NCAR Reanalysis

Underlying SLP data smoothed

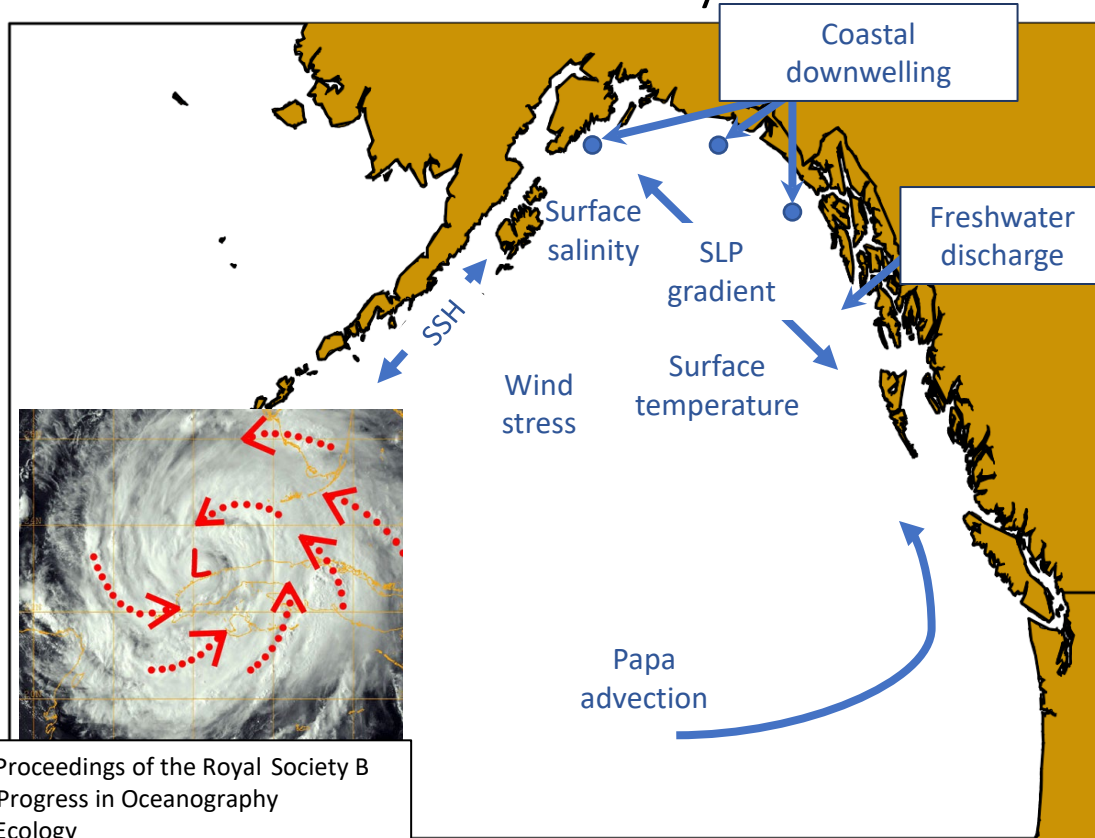
Temporal Pattern

Standard deviation:
11 year (133 month) rolling windows
Aleutian Low variability



1988/89

The Aleutian Low creates correlated environmental variability in the Gulf of Alaska

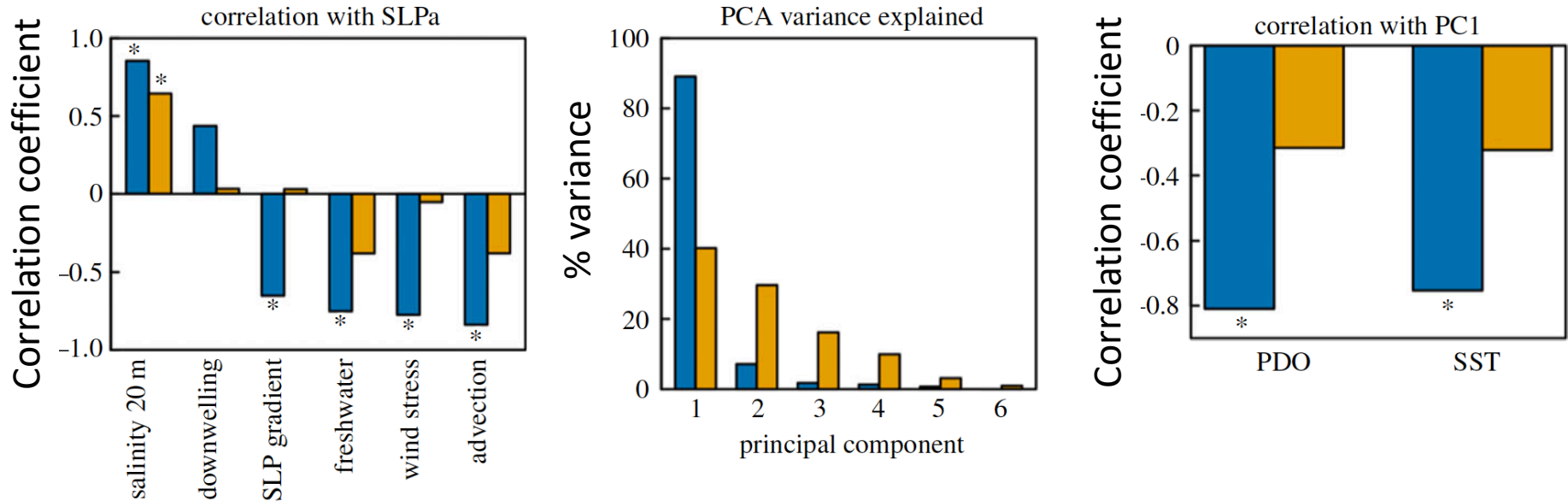


Litzow et al. 2018. Proceedings of the Royal Society B
Puerta et al. 2019. Progress in Oceanography
Litzow et al. 2019. Ecology

Changes in Aleutian Low variance change relationships among Gulf of Alaska climate variables

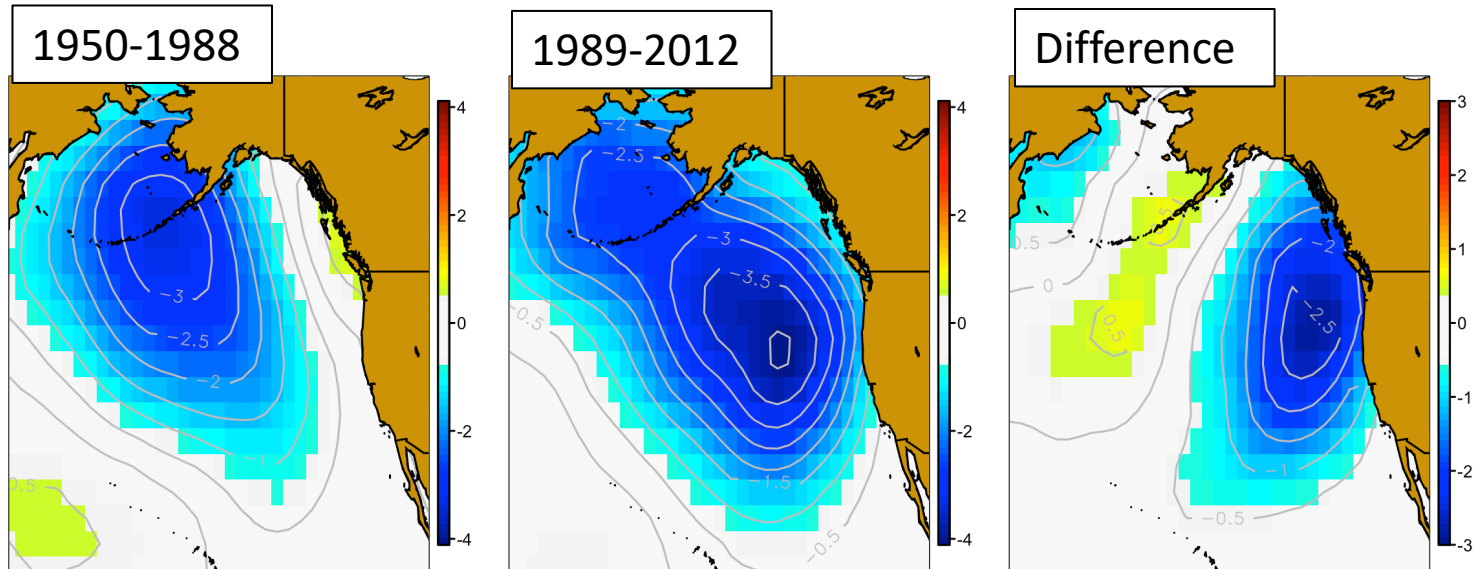
1950–1988 (high variance)

1989–2012 (low variance)



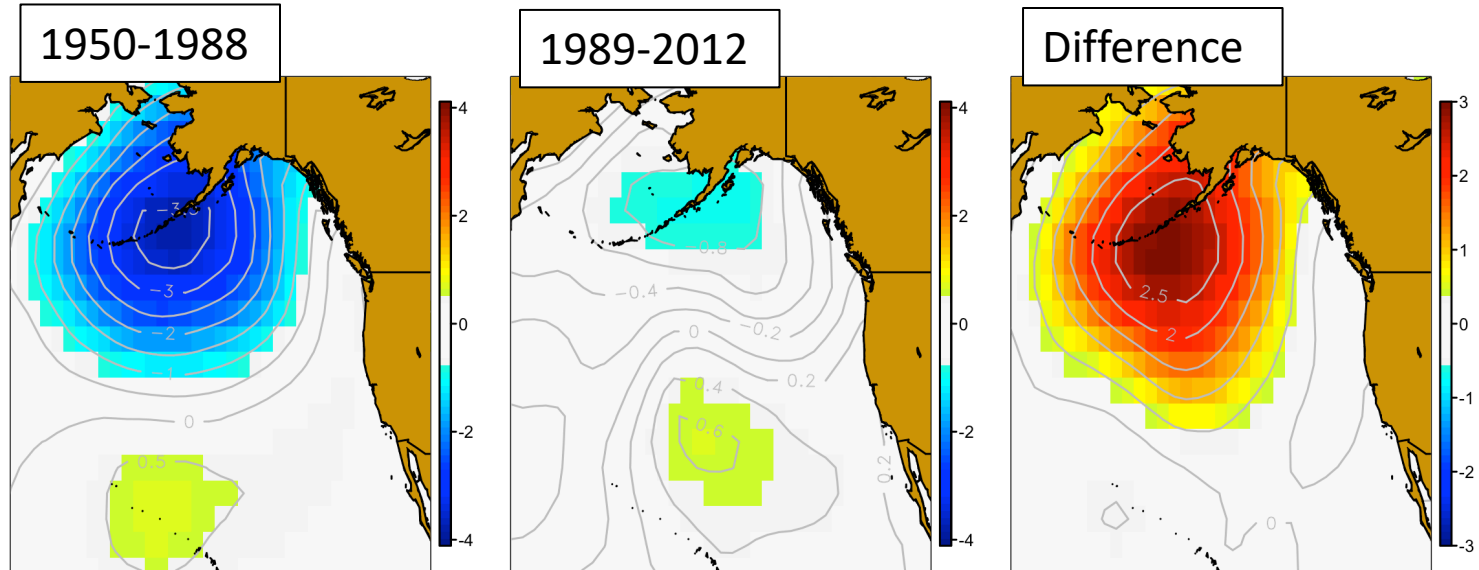
Forcing of the PDO became *less associated* with the Aleutian Low

SLP regression on the PDO (Nov-Jan SLP, Feb-Apr PDO)

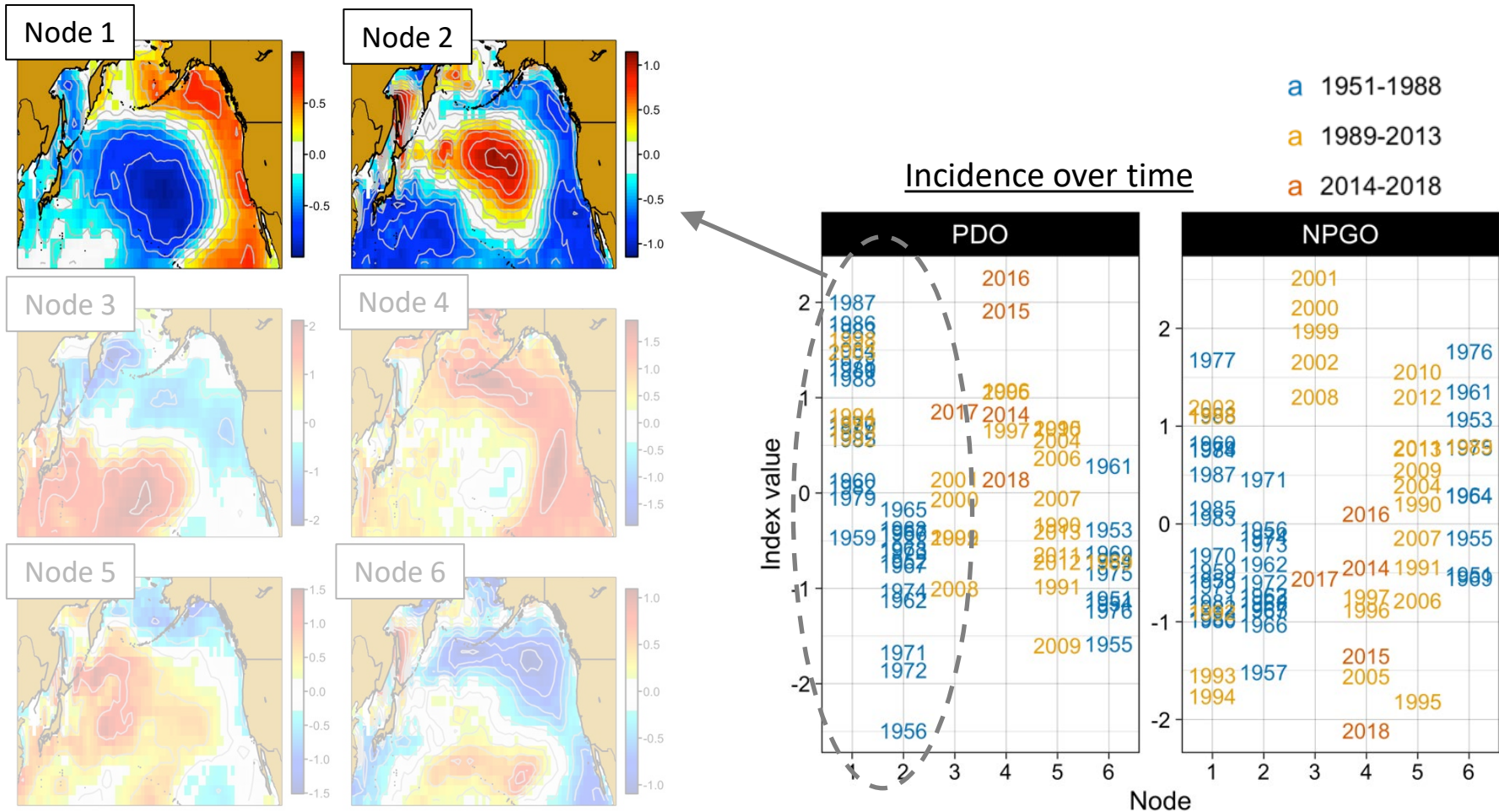


Forcing of the NPGO *weakened*

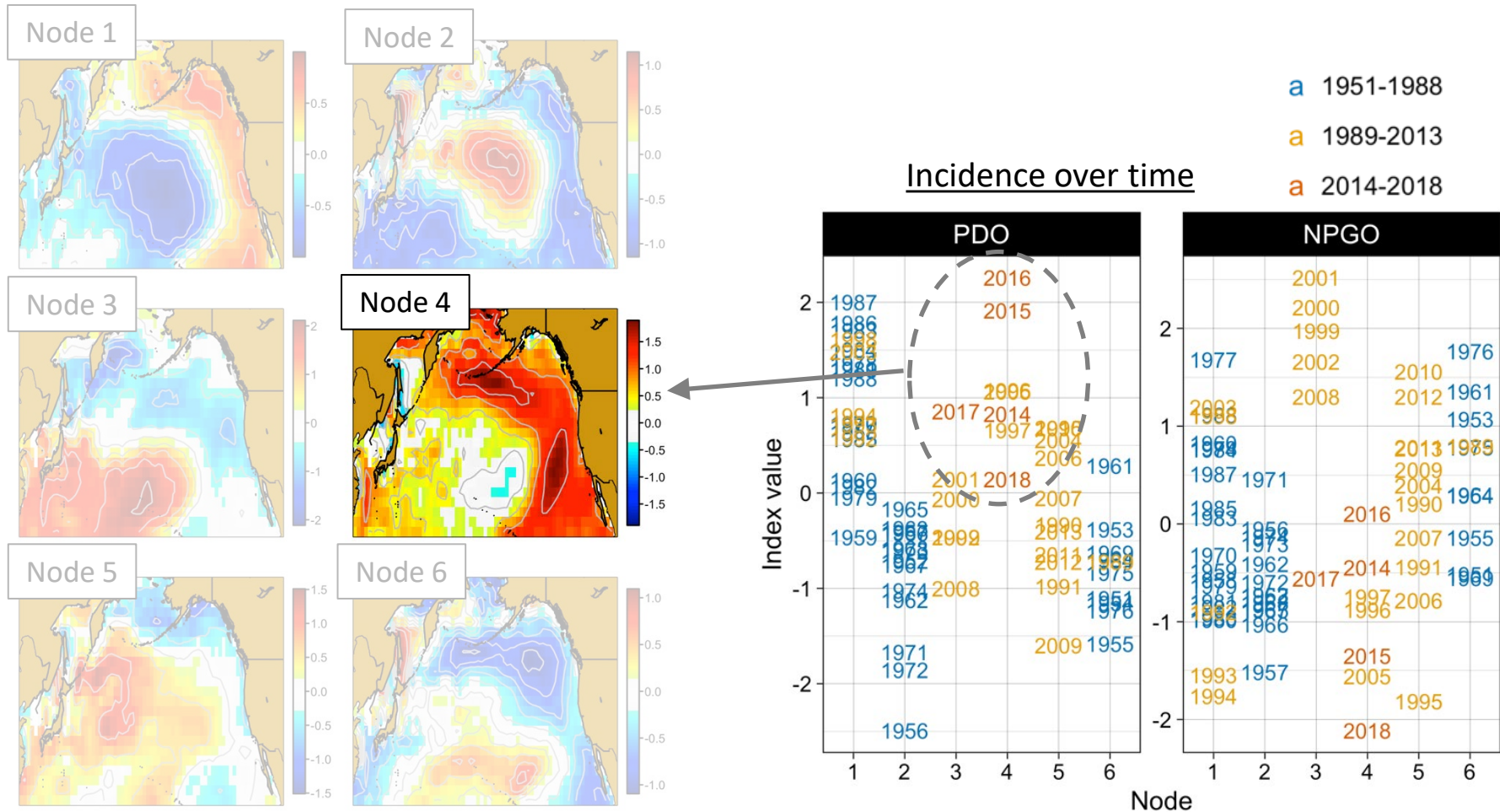
SLP regression on the NPGO
(Nov-Jan SLP, Feb-Apr NPGO)



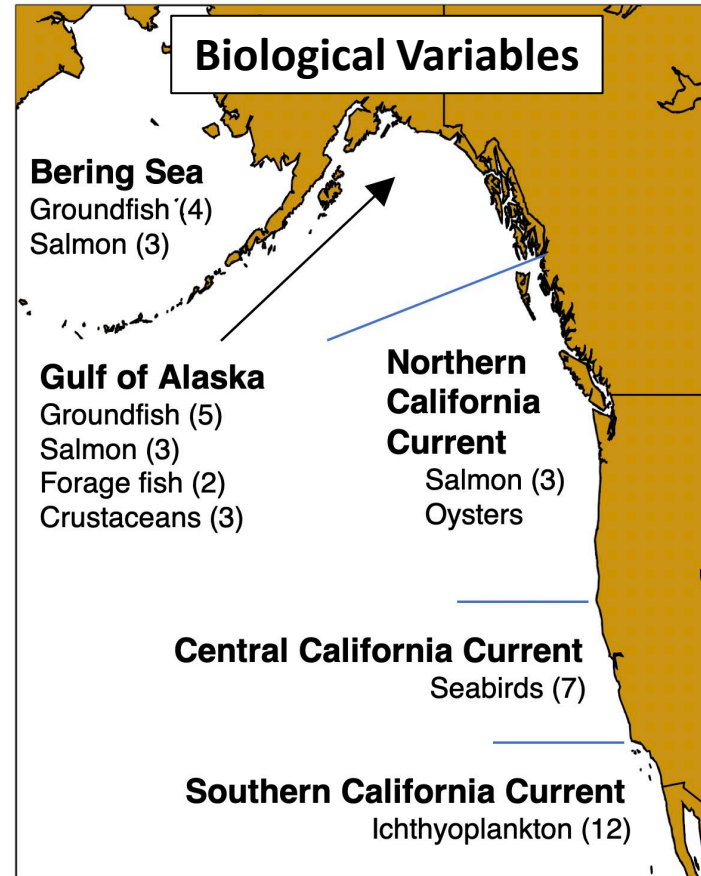
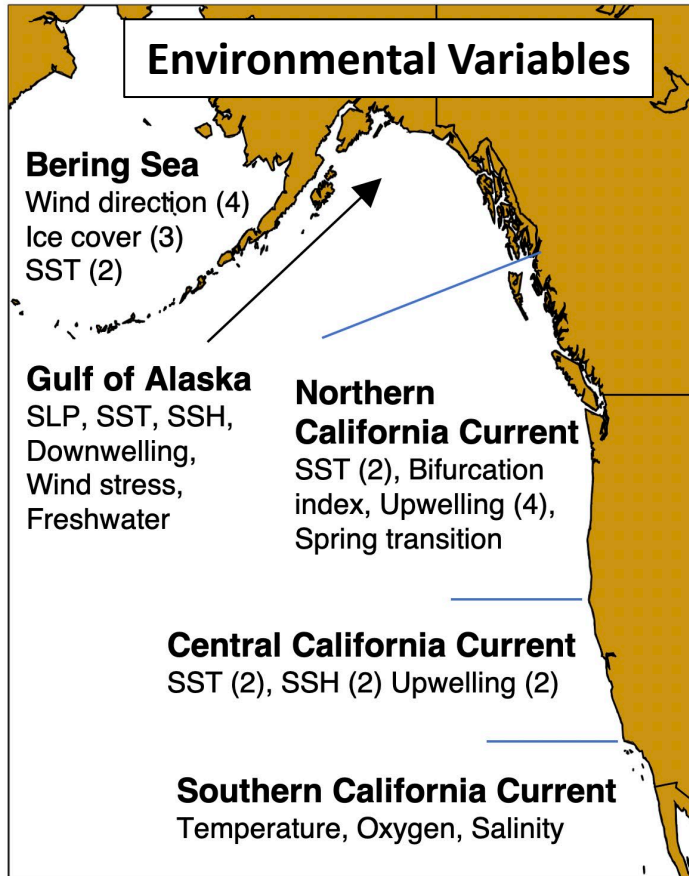
Spatial expression of PDO/NPGO has changed: Self-organizing maps of *non-detrended* SSTa



Spatial expression of PDO/NPGO has changed: Self-organizing maps of *non-detrended* SST



Did expression of the PDO & NPGO change in other regions in the late 1980s?



PDO effects *weakened* after 1988/89

Bayesian regression - ratio of slopes

After 1988/89 : Before 1988/89

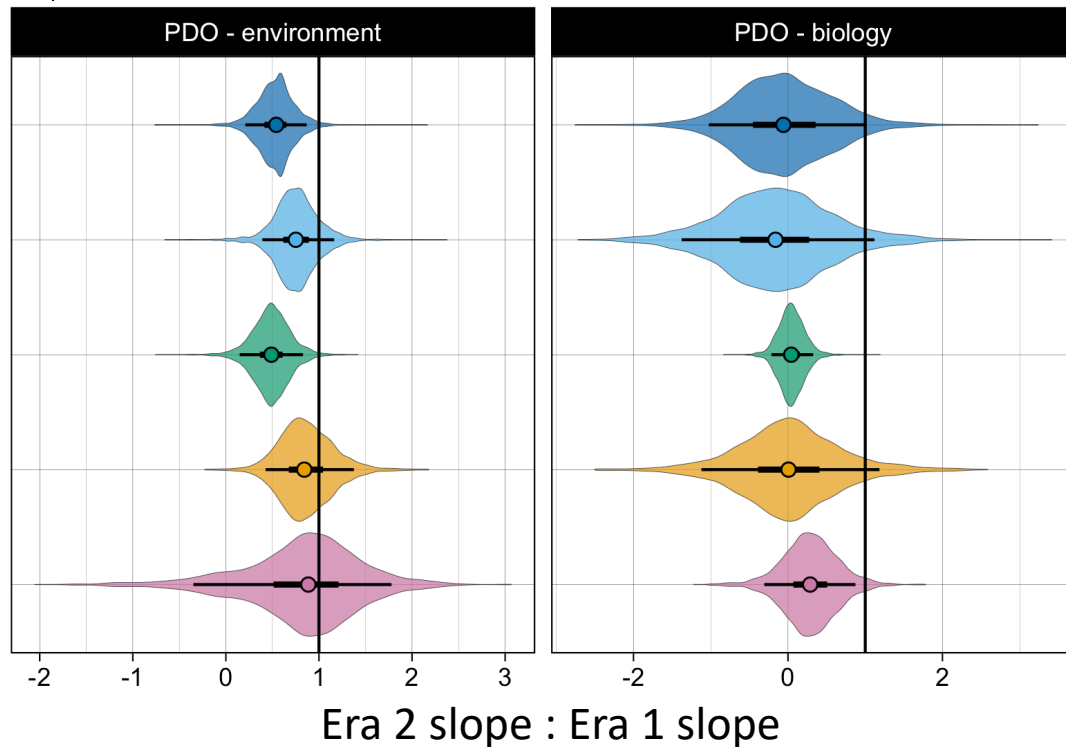
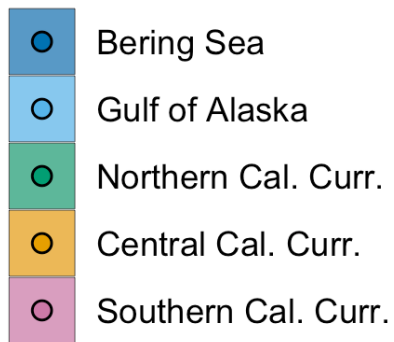
Result	Interpretation
--------	----------------

1	No change
---	-----------

0	Effect decays
---	---------------

negative	Sign switches
----------	---------------

>>1	Effect strengthens
-----	--------------------

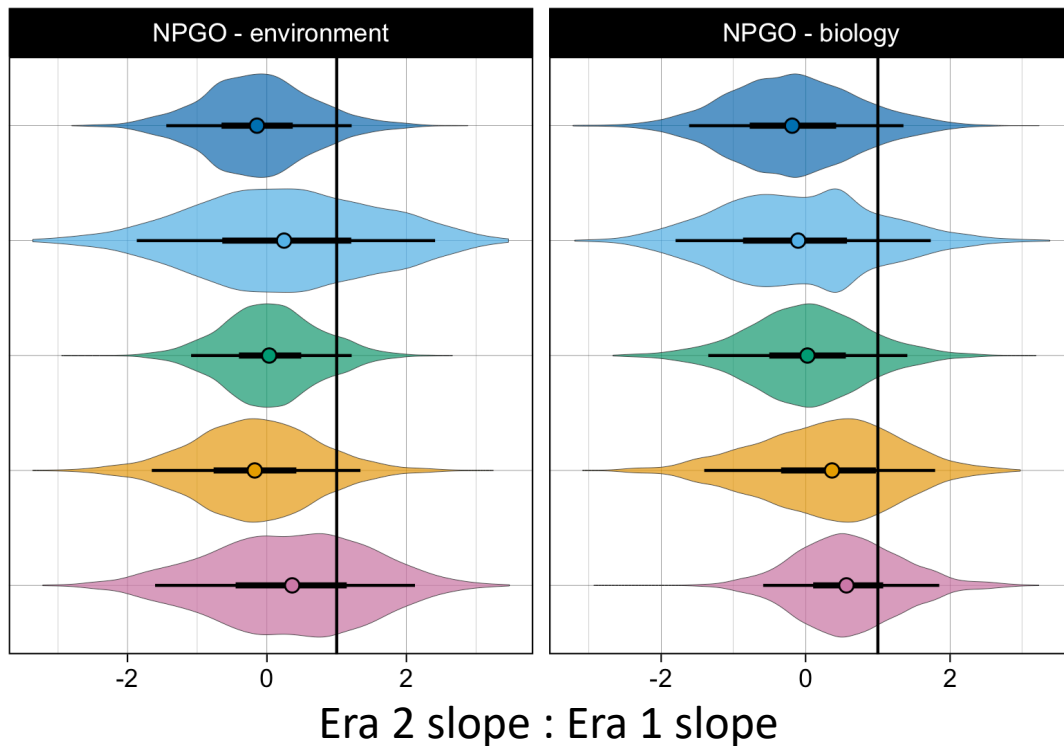
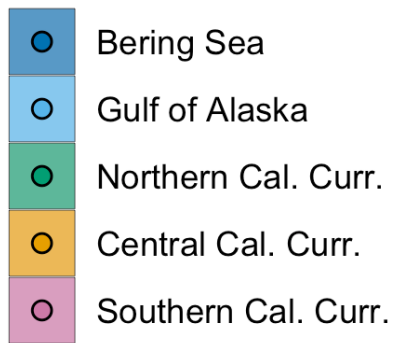


NPGO effects *weakened* after 1988/89

Bayesian regression - ratio of slopes

After 1988/89 : Before 1988/89

Result	Interpretation
1	No change
0	Effect decays
negative	Sign switches
>>1	Effect strengthens

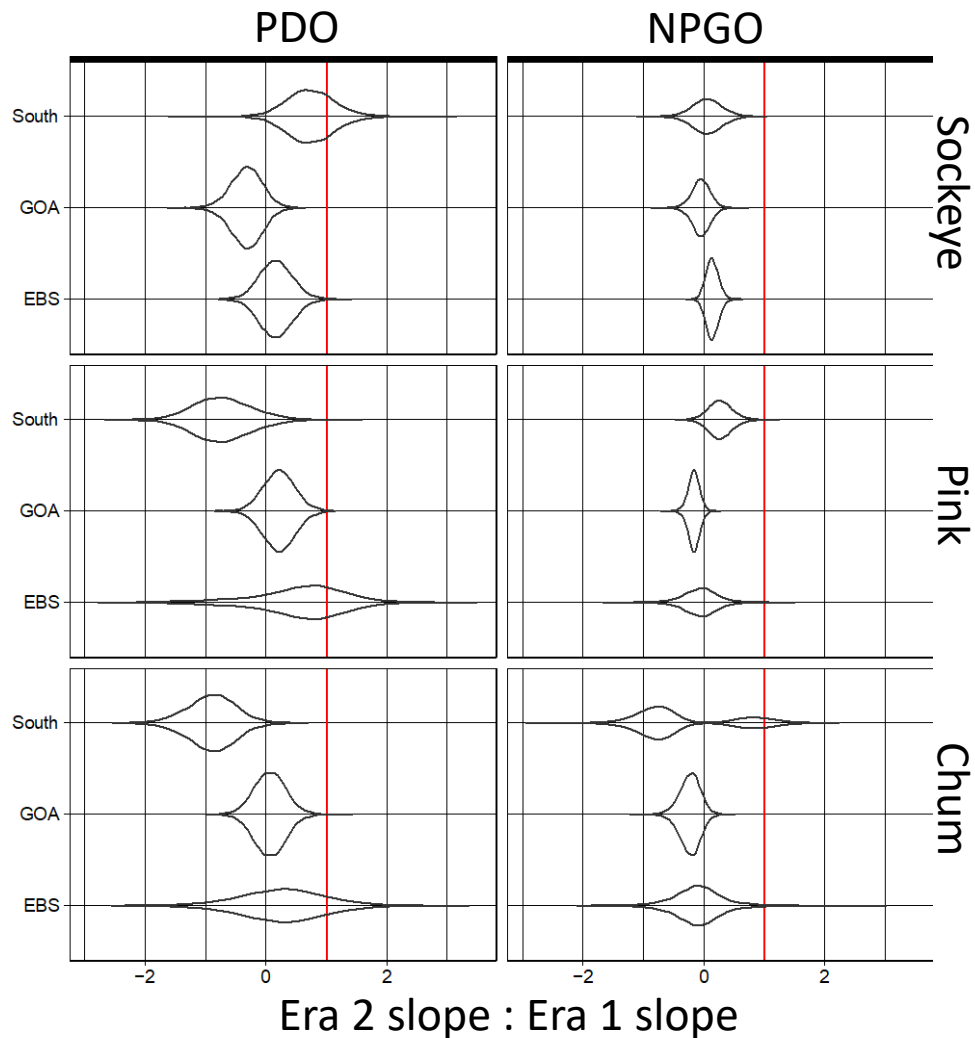


Effects on salmon *weakened*
(or changed sign) after 1988/89

Bayesian regression - ratio of slopes

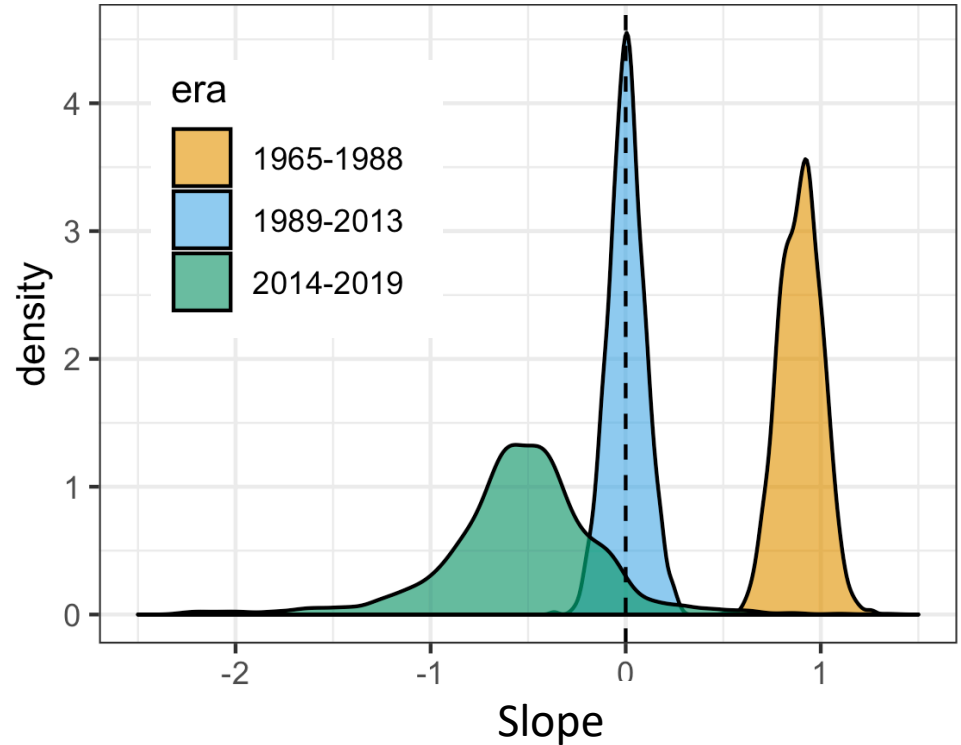
After 1988/89 : Before 1988/89

<u>Result</u>	<u>Interpretation</u>
1	No change
0	Effect decays
negative	Sign switches
>>1	Effect strengthens

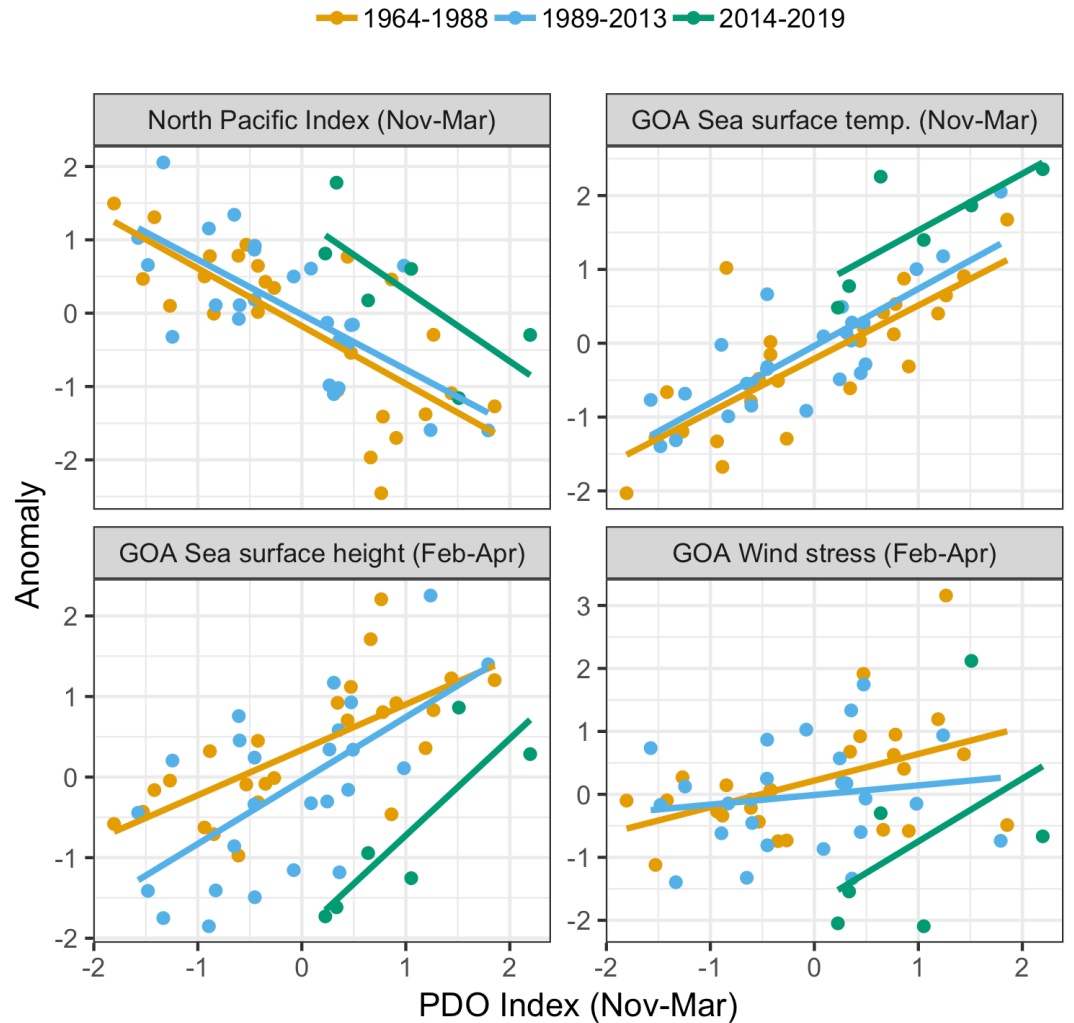


PDO expression may be changing again since 2014

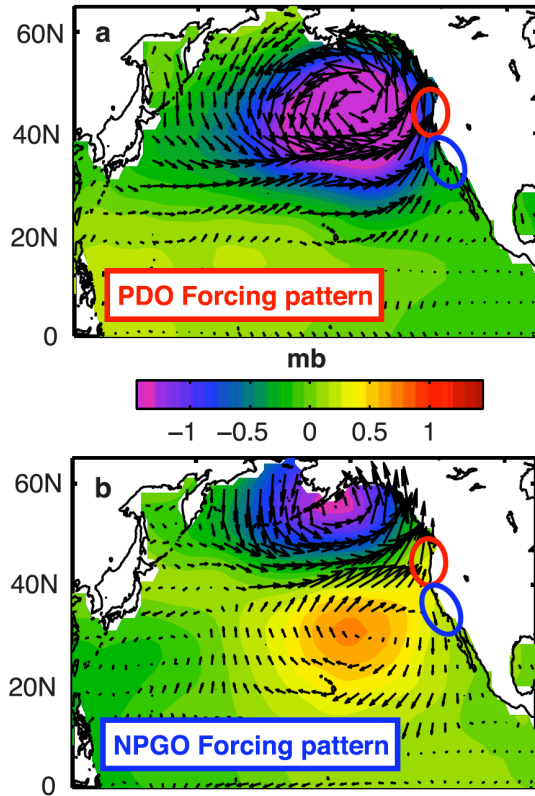
Gulf of Alaska sockeye salmon catches regressed on the PDO: posterior distribution of slopes



PDO expression may be changing again since 2014



Implications



- Suggests caution in use of PDO/NPGO as climate indices over multidecadal time scales
- Novel 'packets' of climate are associated with the PDO/NPGO over time
- Need to understand basin-scale -> regional linkages driving nonstationarities



Funding from the NOAA Fisheries
and the Environment Program