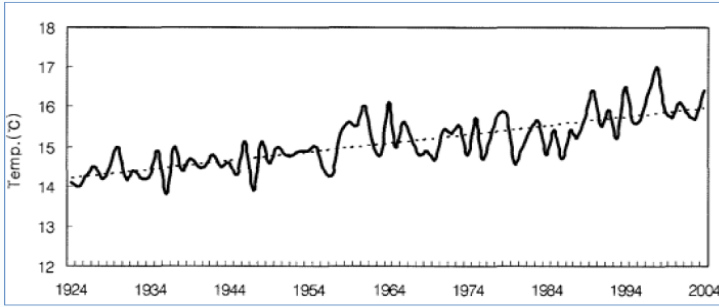
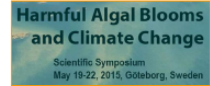


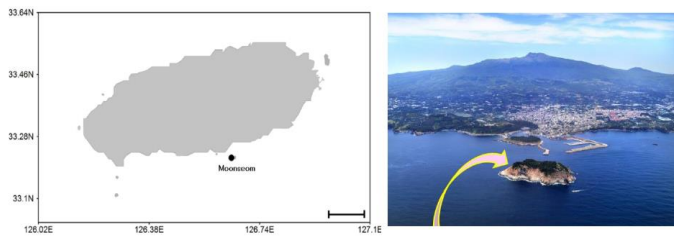
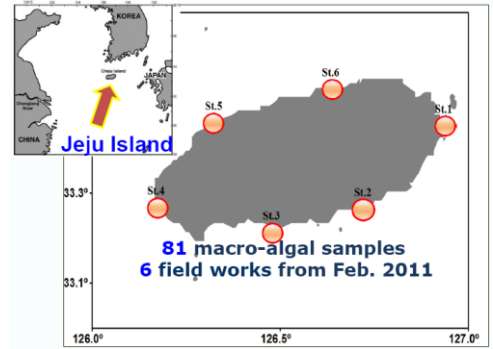
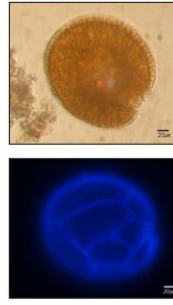
# Spatiotemporal Distribution of Epiphytic Dinoflagellates in Korean Seas



Wonho Yih, Hyung Seop Kim, Bora Jang, Mi Ryoung Oh, Buyng Su Hwang, Jung Rae Rho  
Kunsan National University, Republic of Korea (E-mail: ywonho@kunsan.ac.kr)



The variation of annual mean temperature in Jeju, Korea (1924~2004; Kim et al. 2006)

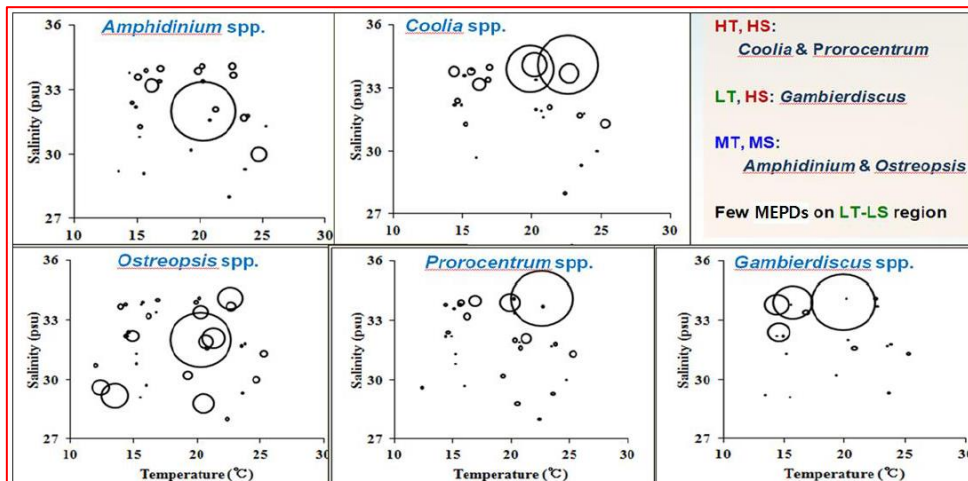
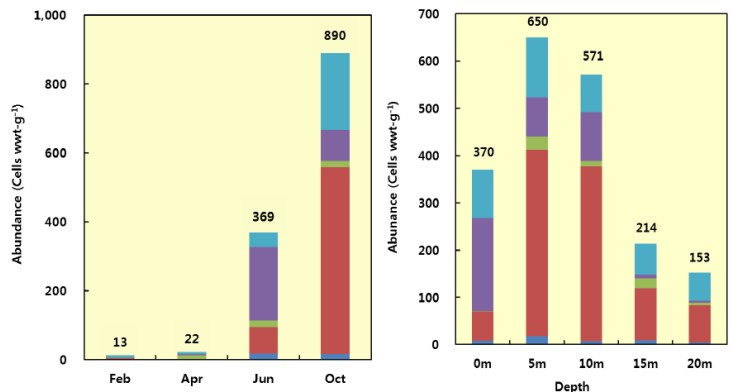


## Jeju Island, Korea

Very sensitive spot to Climate change  
(Temperate latitude + Inflow of Kuroshio WW)

MEPDs are settling down (1/1000, density)

Very early stage of settlement  
CC-driven Expansion MEDP communities  
Ichthyotoxicity issue, well to be met soon  
(Jeju: A 'CC-hypothesis testing' site)



CC  
vs.  
northward expansion

CC  
vs.  
Eco. Niche meandering

Etc.....