



# Spatial and temporal variations of satellite-derived SST, and phytoplankton biomass and production in the transition zone at the southernmost CCS in 2002-2017

Saúl Álvarez-Borrego\*, Uriel Mirabal-Gómez, José C. Ortiz-Ahumada, and José R. Lara-Lara

CICESE, División de Oceanología

E-mail: [alvarezb@cicese.mx](mailto:alvarezb@cicese.mx)

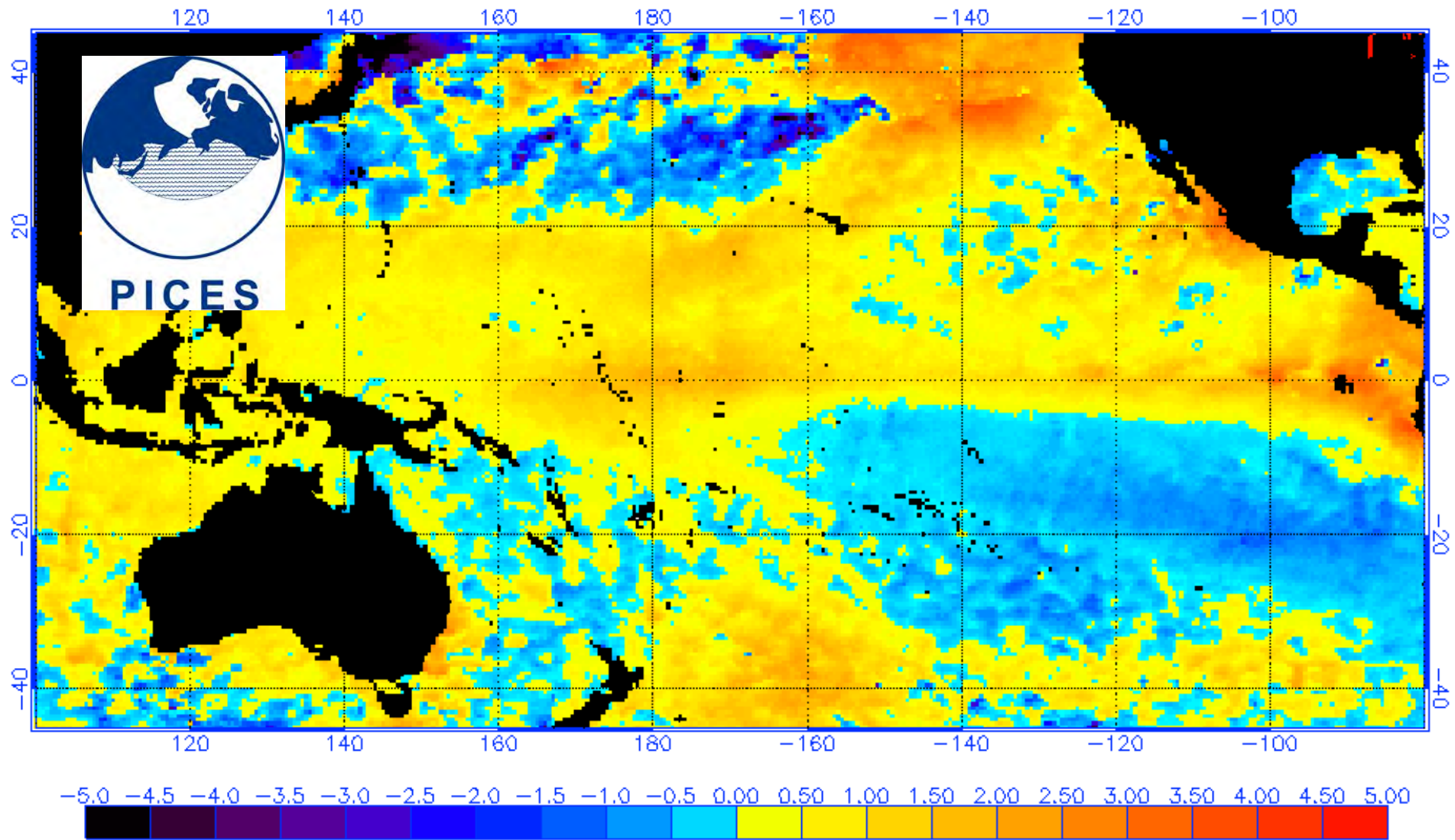
\*ponente

PICES International Symposium:

Understanding Changes in Transitional Areas of the Pacific

La Paz, April 24-26, 2018

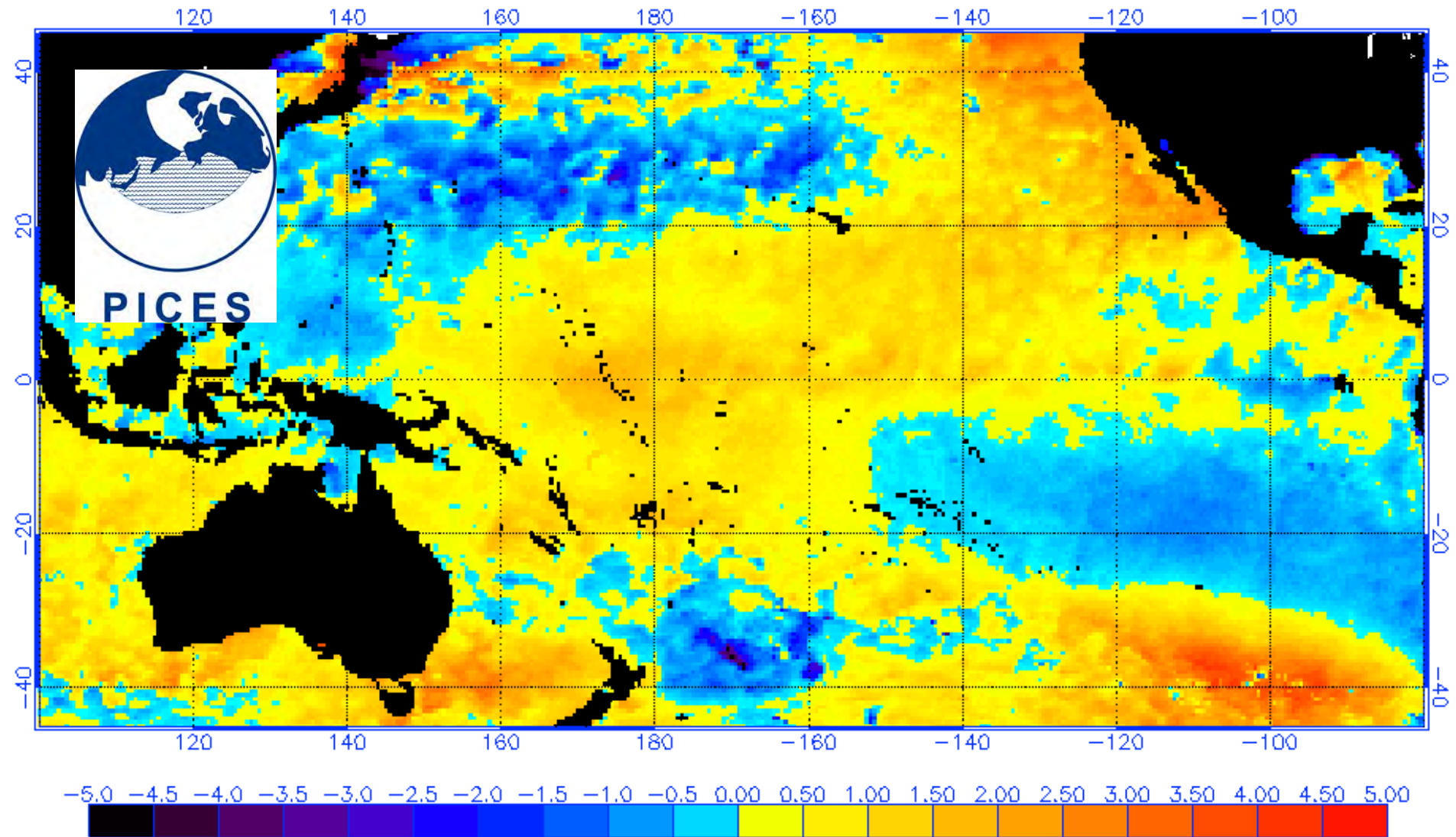
NOAA/NESDIS SST Anomaly (degrees C), 5/29/2014



Reproduced from [www.ospo.noaa.gov/Products/ocean/sst/anomaly](http://www.ospo.noaa.gov/Products/ocean/sst/anomaly)

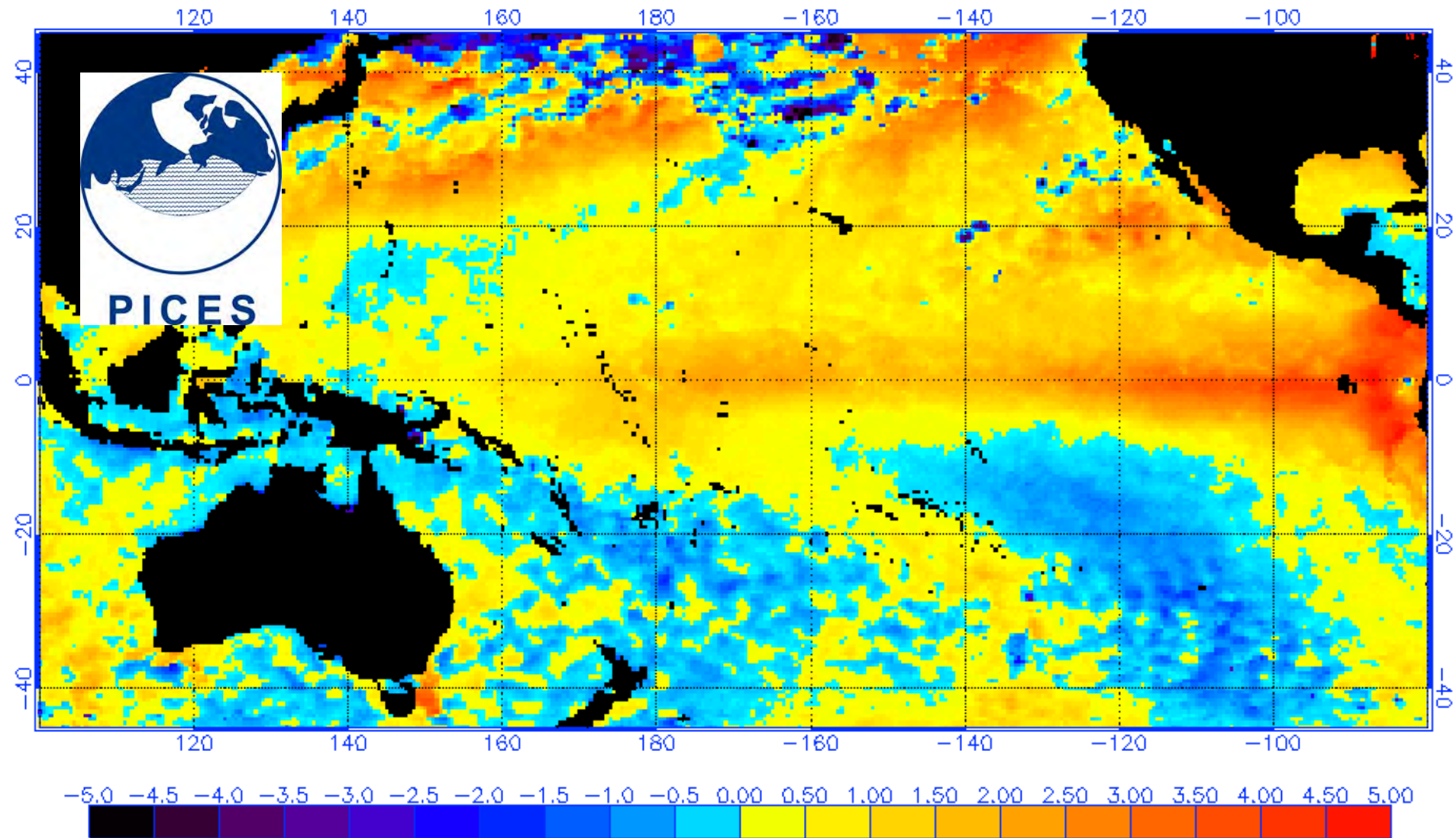


NOAA/NESDIS SST Anomaly (degrees C), 2/26/2015



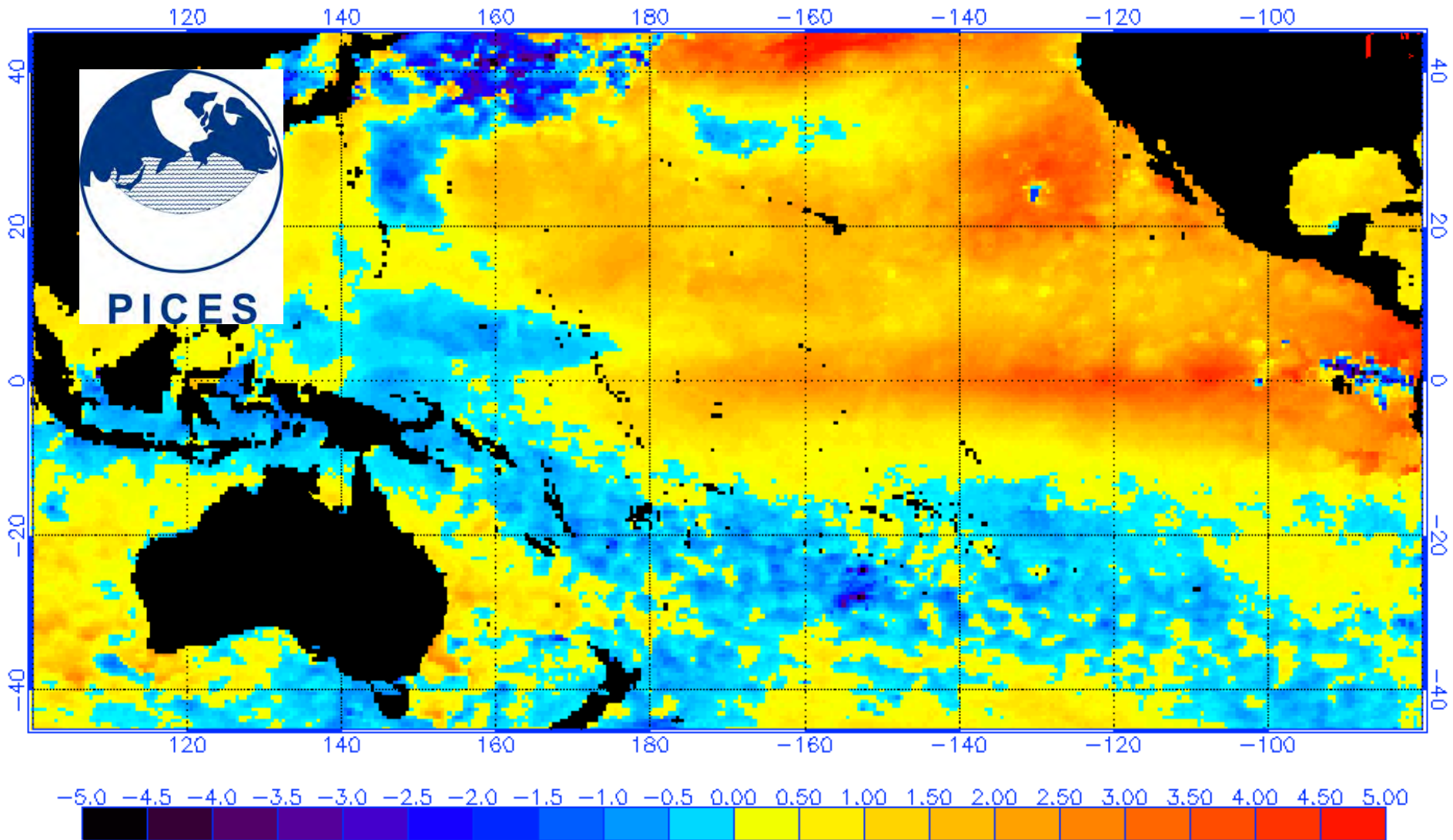
Reproduced from [www.ospo.noaa.gov/Products/ocean/sst/anomaly](http://www.ospo.noaa.gov/Products/ocean/sst/anomaly)

NOAA/NESDIS SST Anomaly (degrees C), 6/29/2015



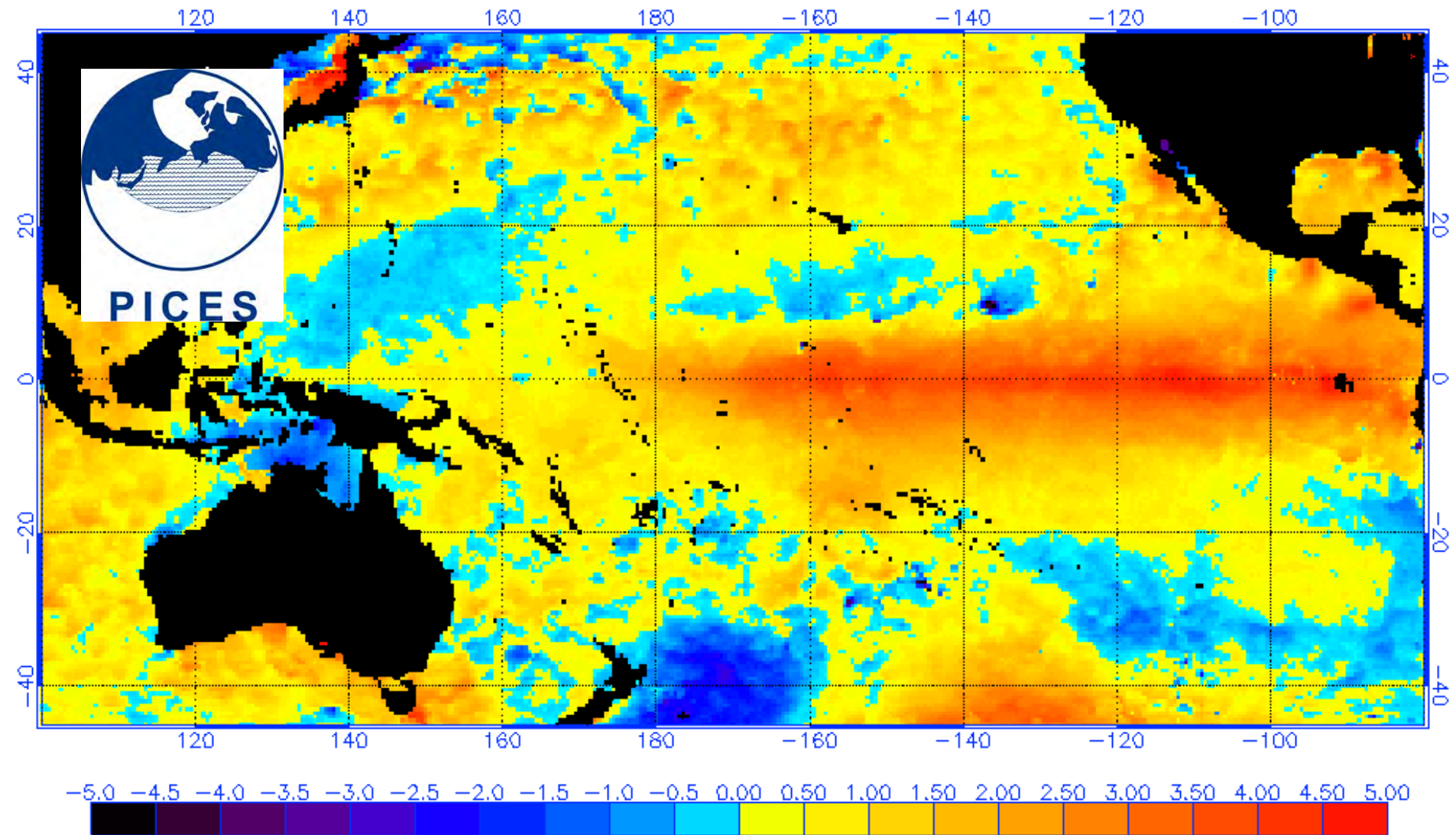
[Reproduced from www.ospo.noaa.gov/Products/ocean/sst/anomaly](http://www.ospo.noaa.gov/Products/ocean/sst/anomaly)

NOAA/NESDIS SST Anomaly (degrees C), 8/31/2015



Reproduced from [www.ospo.noaa.gov/Products/ocean/sst/anomaly](http://www.ospo.noaa.gov/Products/ocean/sst/anomaly)

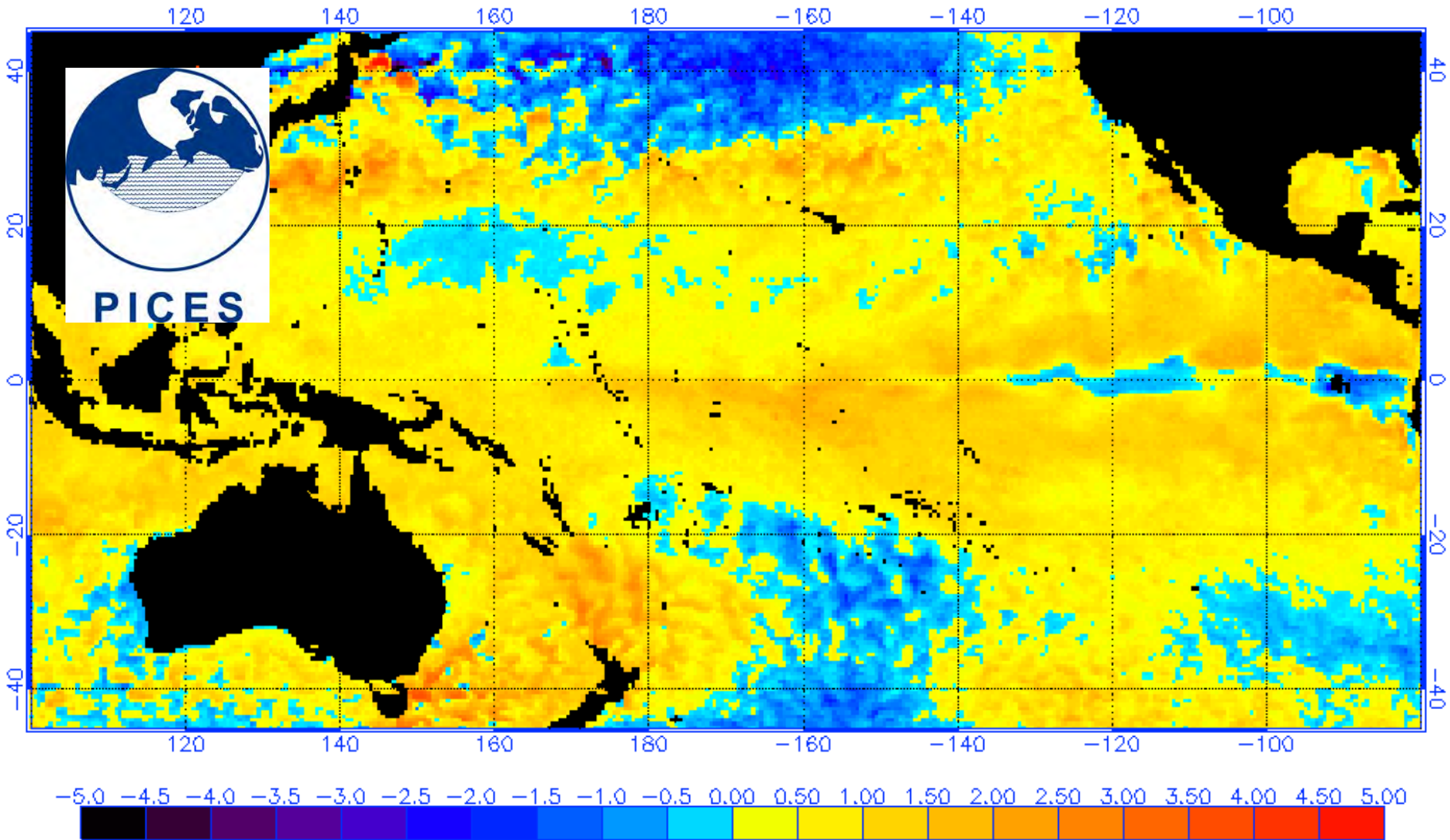
NOAA/NESDIS SST Anomaly (degrees C), 12/31/2015



[Reproduced from www.ospo.noaa.gov/Products/ocean/sst/anomaly](http://www.ospo.noaa.gov/Products/ocean/sst/anomaly)

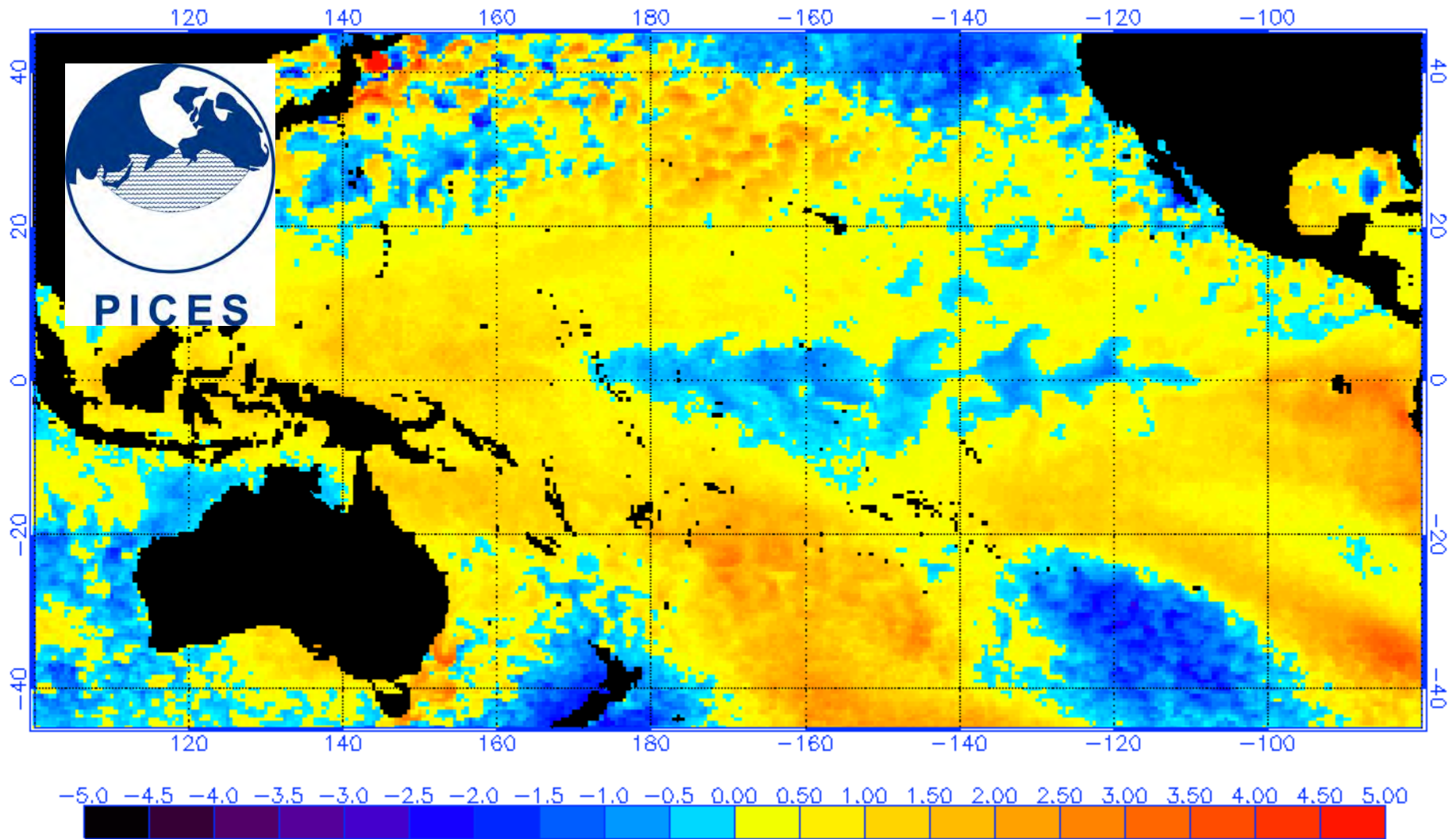


NOAA/NESDIS SST Anomaly (degrees C), 4/28/2016



Reproduced from [www.ospo.noaa.gov/Products/ocean/sst/anomaly](http://www.ospo.noaa.gov/Products/ocean/sst/anomaly)

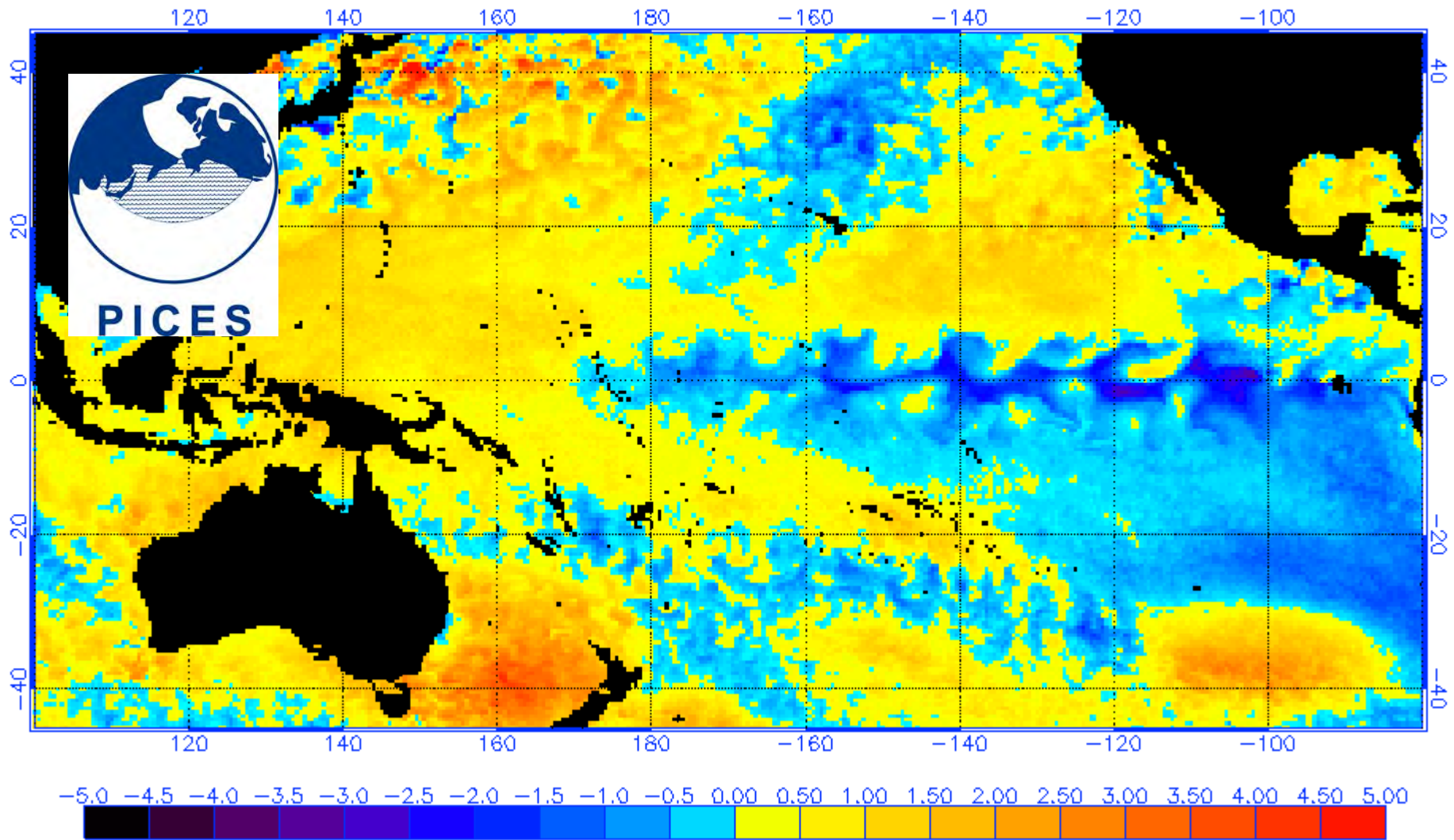
NOAA/NESDIS SST Anomaly (degrees C), 1/30/2017



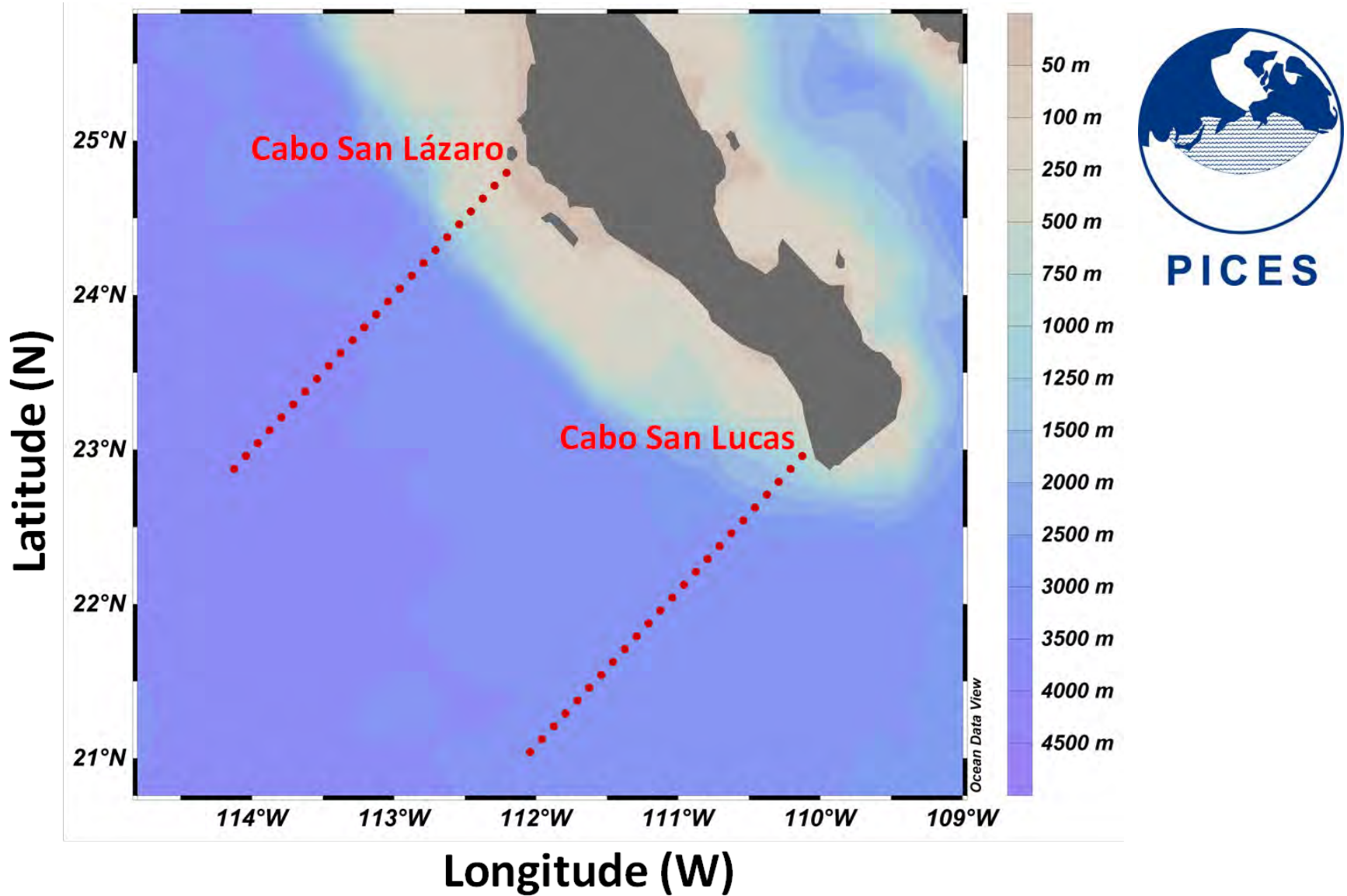
[Reproduced from www.ospo.noaa.gov/Products/ocean/sst/anomaly](http://www.ospo.noaa.gov/Products/ocean/sst/anomaly)



NOAA/NESDIS SST Anomaly (degrees C), 12/28/2017



Reproduced from [www.ospo.noaa.gov/Products/ocean/sst/anomaly](http://www.ospo.noaa.gov/Products/ocean/sst/anomaly)



Sampling transects off Cabo San Lázaro and off Cabo San Lucas, Baja California Sur.

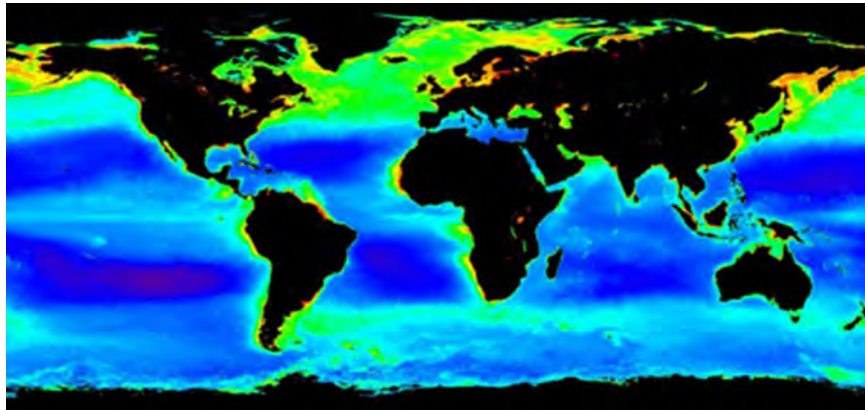
# Data sources

Monthly composites from the Aqua-Modis sensor, from 2002-2017, from the *Ocean color*, NASA web page.

❖ SST and Chl



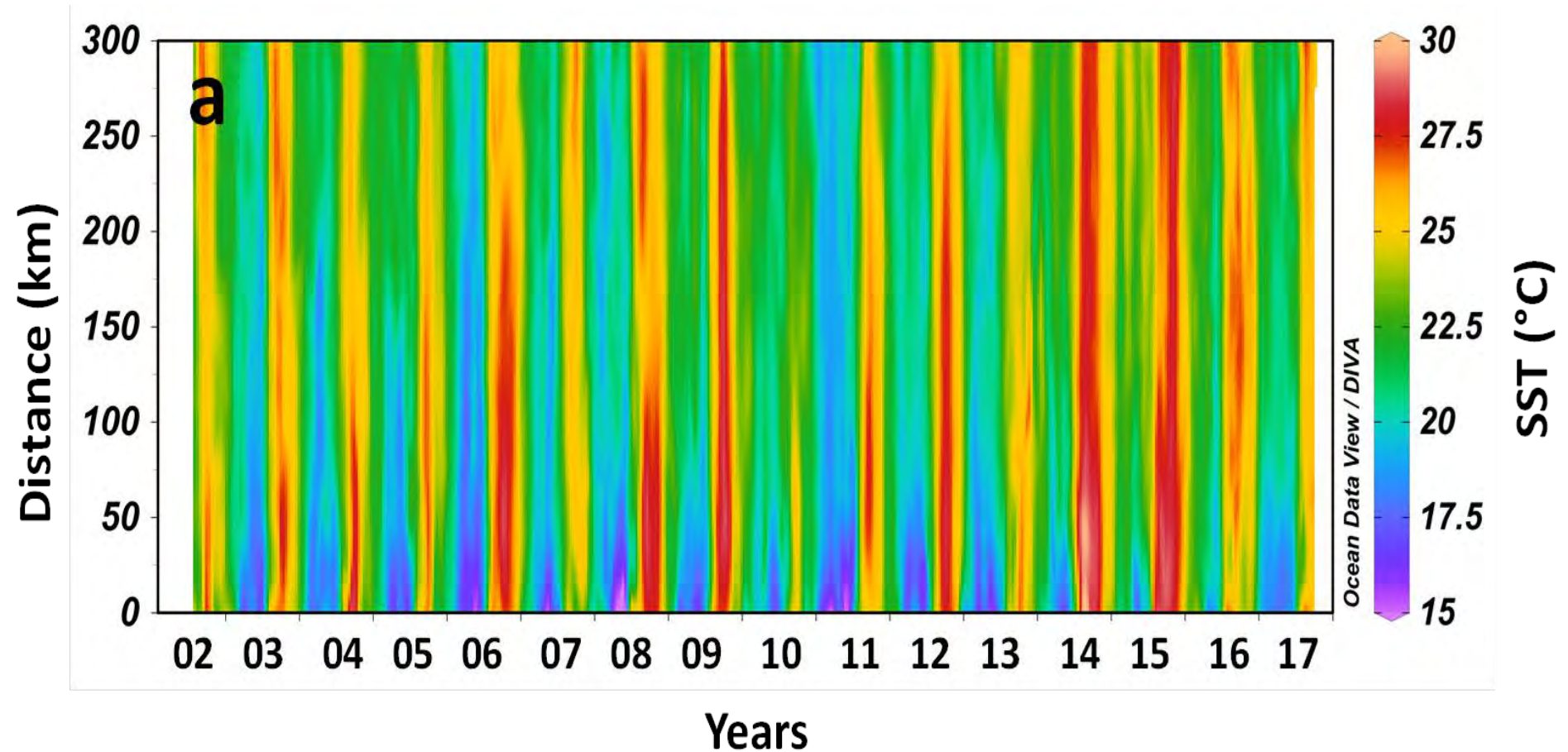
**PICES**



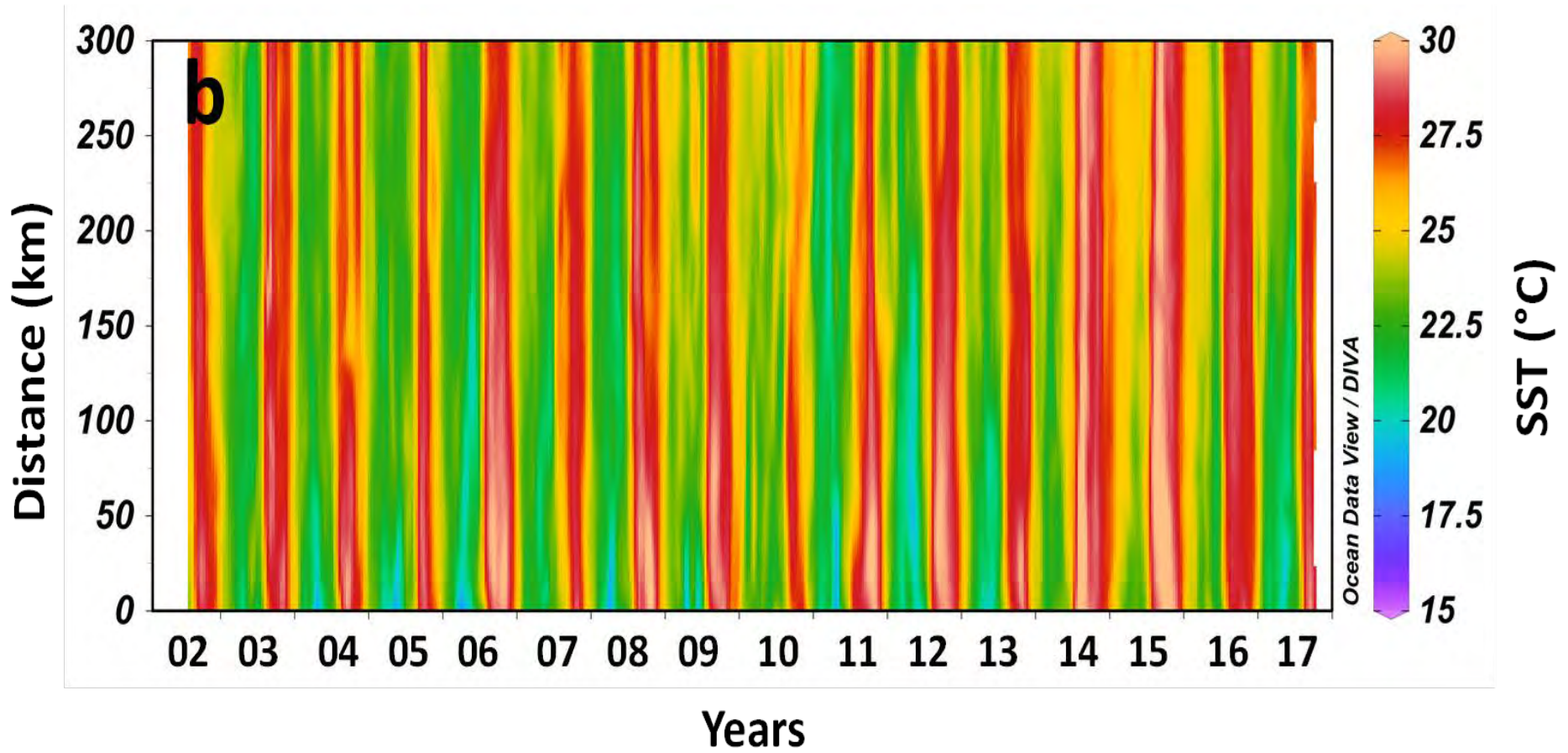
SeaDAS v. 7.1



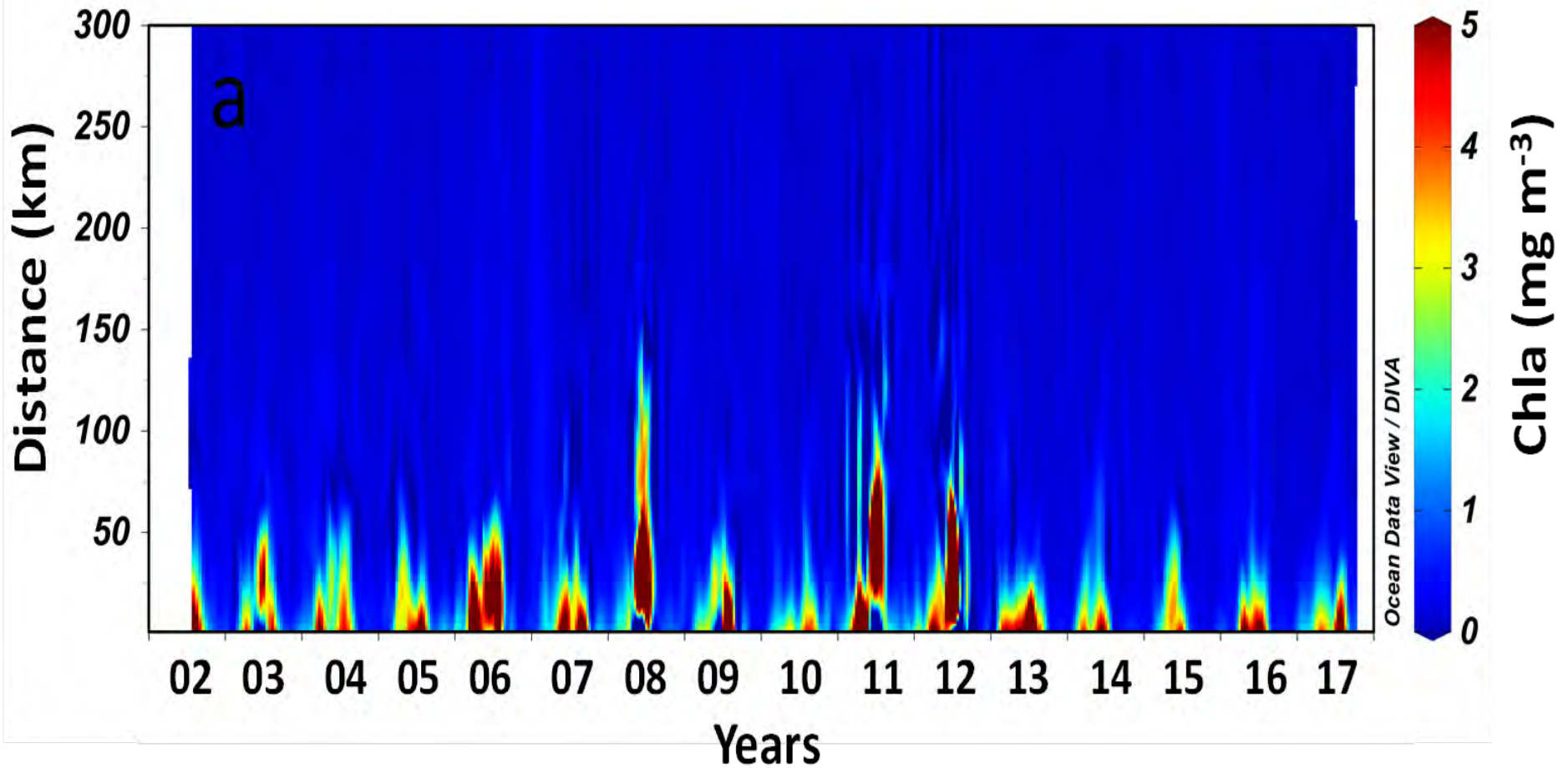




Hovmöller diagram for SST on the transect off Cabo San Lázaro, Baja California Sur.

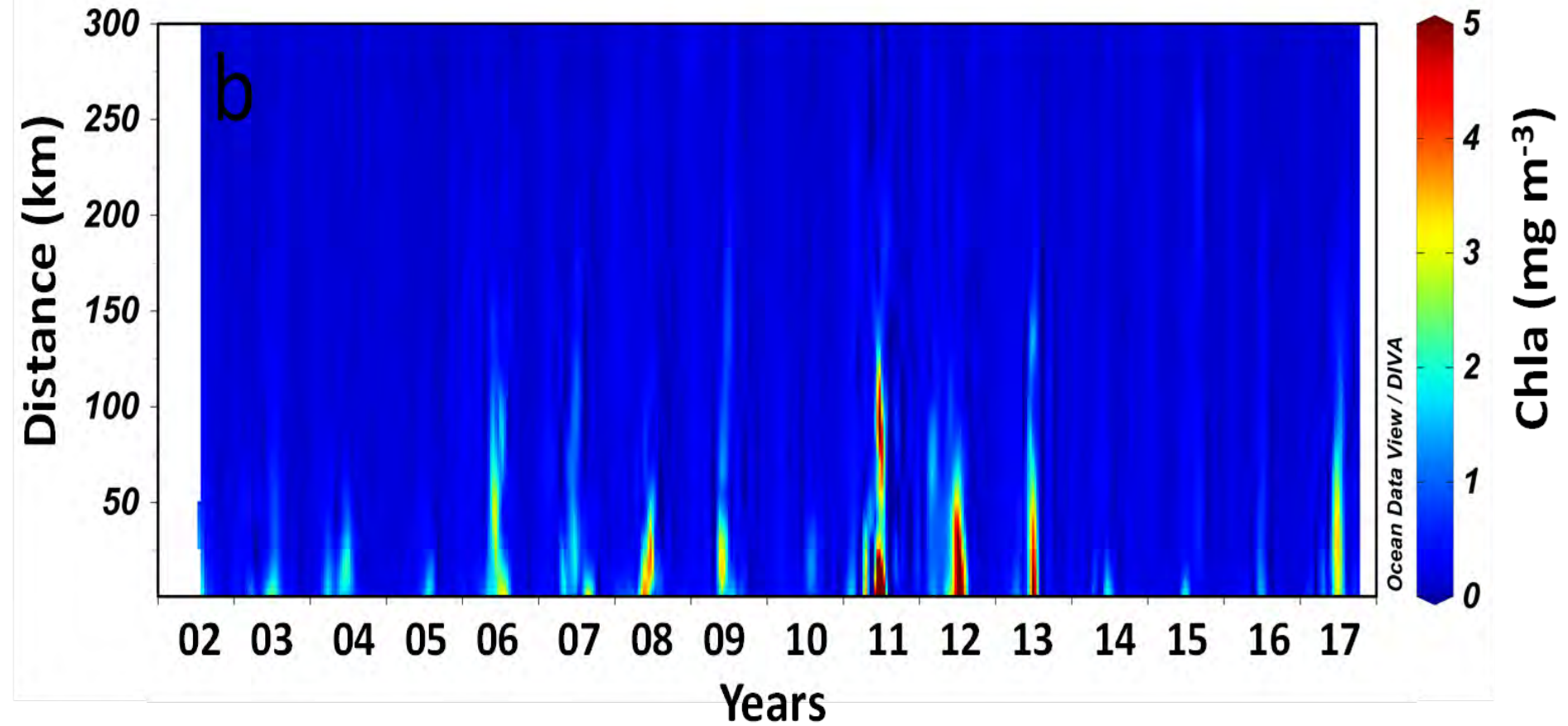


Hovmöller diagram for SST on the transect off Cabo San Lucas, Baja California Sur.

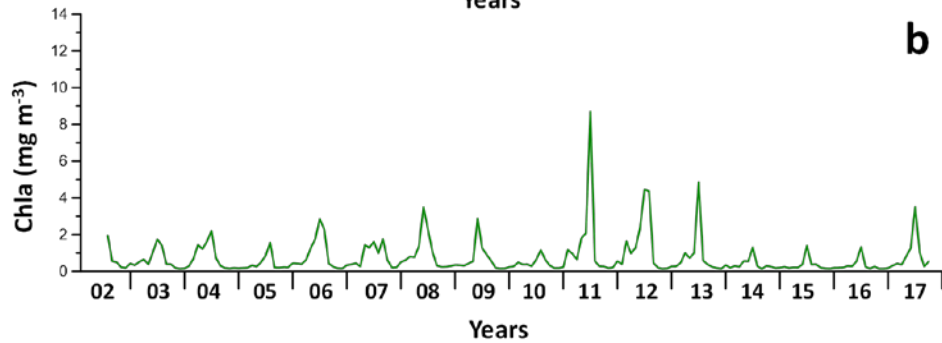
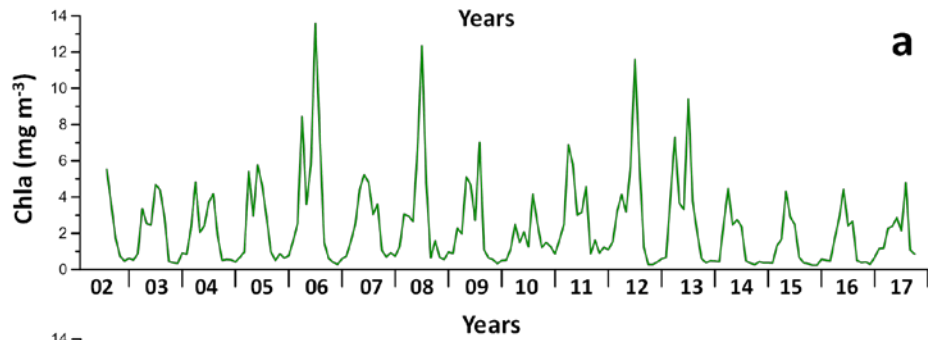
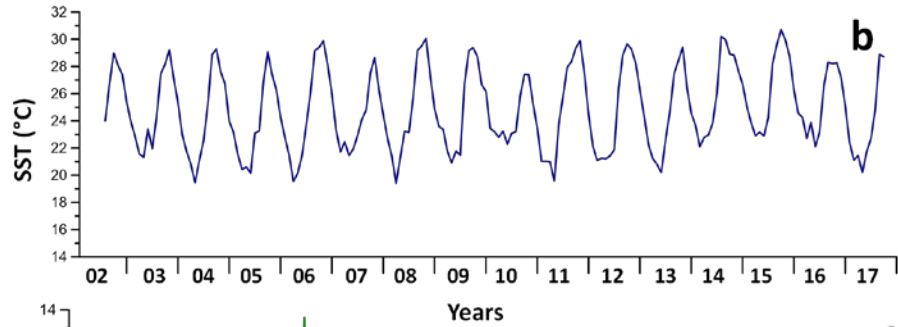
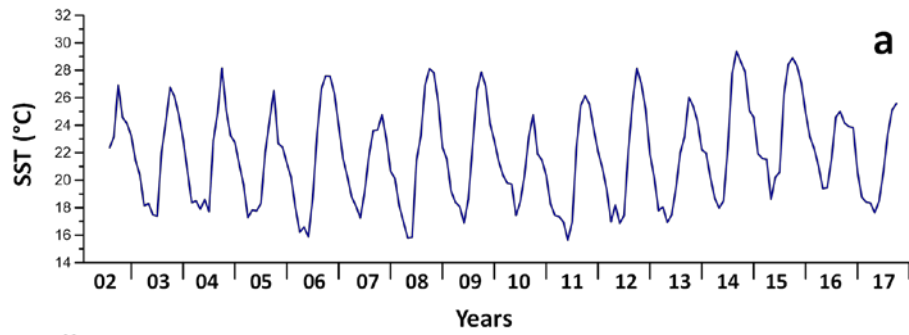


Hovmöller diagram for  $\text{Chla}_{\text{sat}}$  on the transect off Cabo San Lázaro, Baja California Sur.

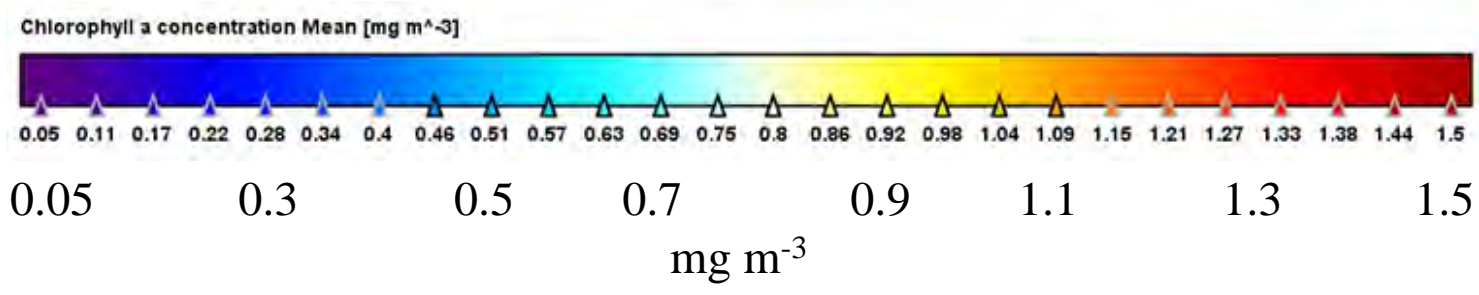
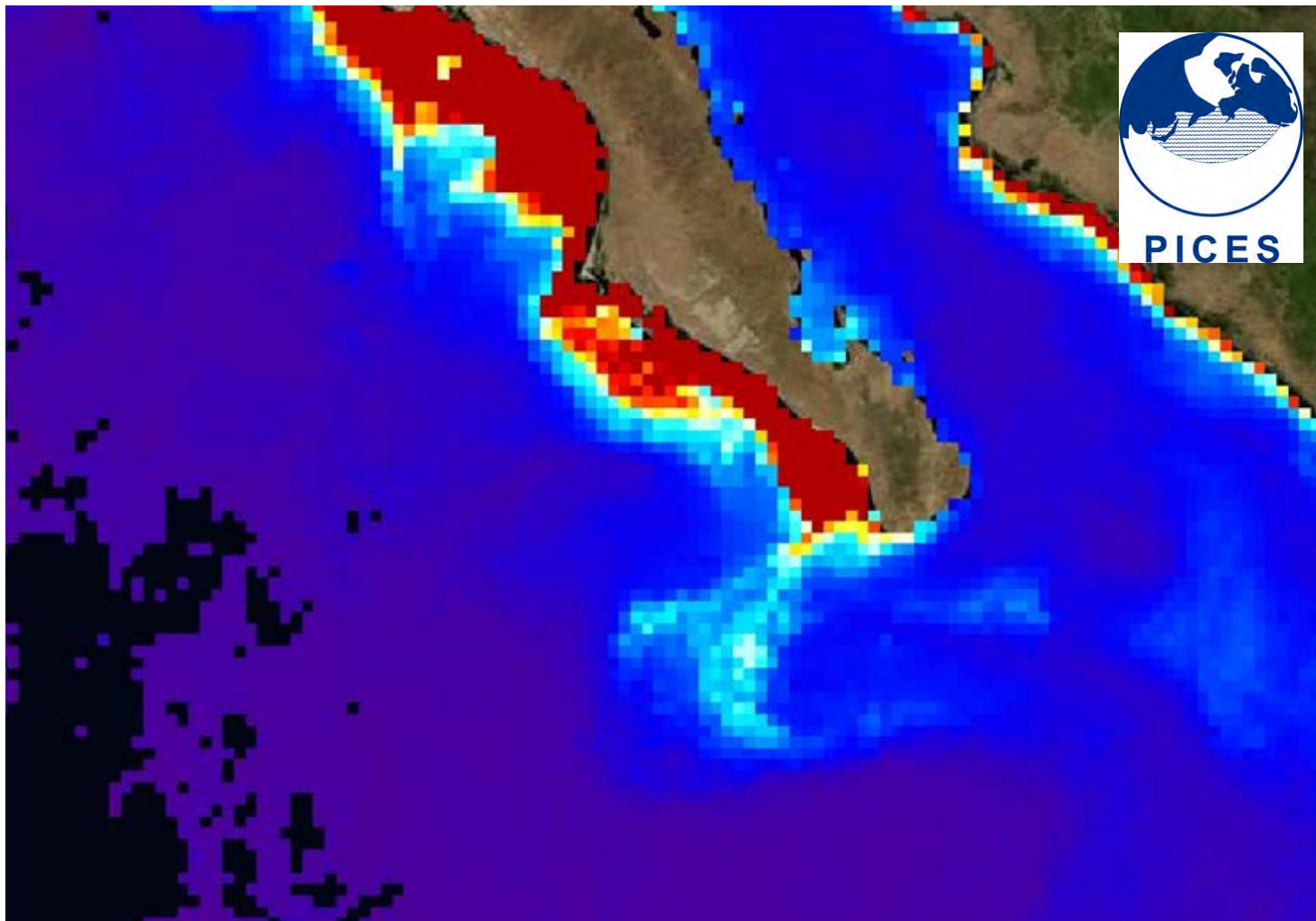




Hovmöller diagram for  $\text{Chla}_{\text{sat}}$  on the transect off Cabo San Lucas, Baja California Sur.



**PICES**







Have a happy day!!