

Variations in walleye pollock (*Theragra chalcogramma*) maturation rates in the Gulf of Alaska

Ben Williams, Gordon Kruse

University of Alaska Fairbanks, Alaska USA

Martin Dorn

NOAA Alaska Fisheries Science Center, Washington USA

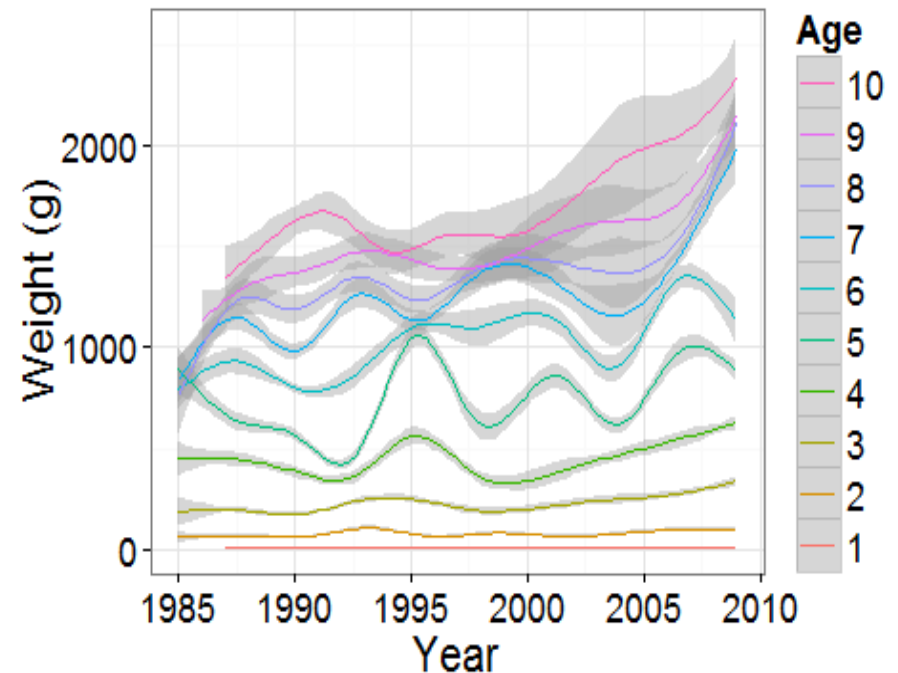
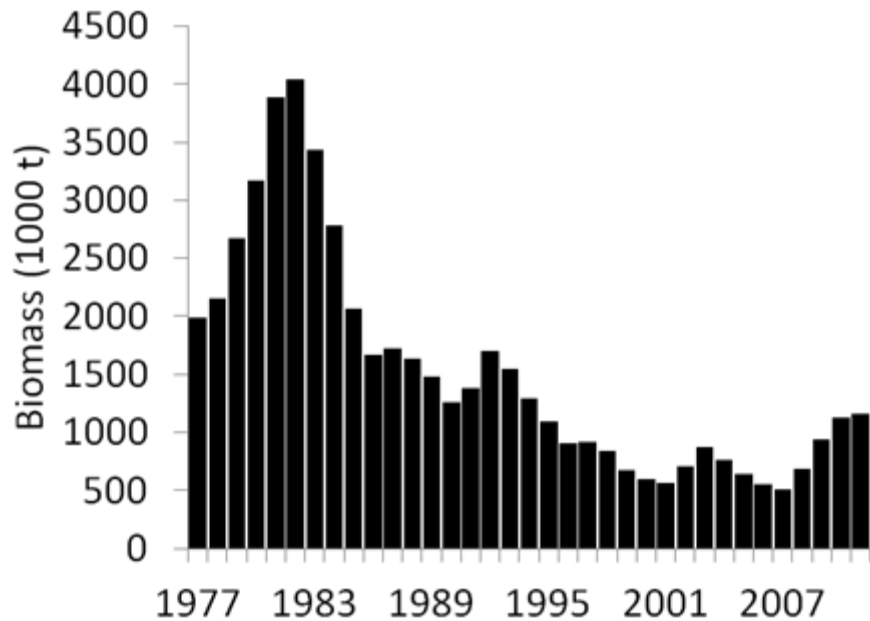


Background

- Walleye pollock support the largest fishery in the U.S., 24% of total landings.
- GOA populations are managed by applying a harvest rate toward an assessment model estimate of spawning stock biomass (SSB), which is based on estimates of weight, fecundity and a **maturity schedule**.

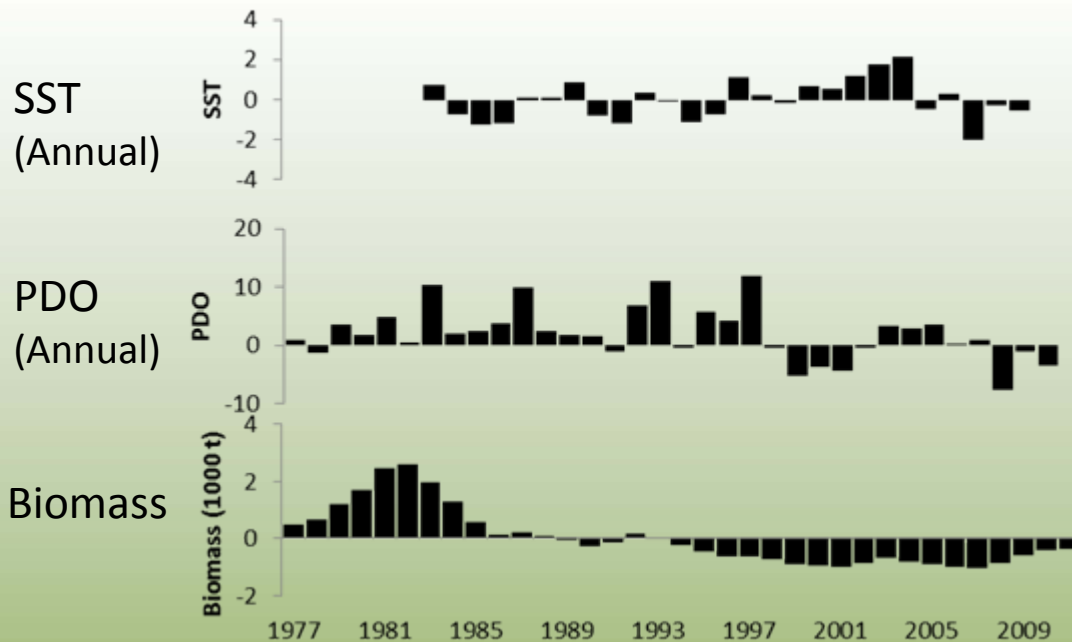
Background

Dynamic changes in stock abundance and size-at-age



Objectives

- Improve maturity schedule estimates.
- Examine functional relationships between maturity rates, stock abundance, environmental factors.
- Broader study examining total egg production (TEP) as it relates to environmental variability and population size.

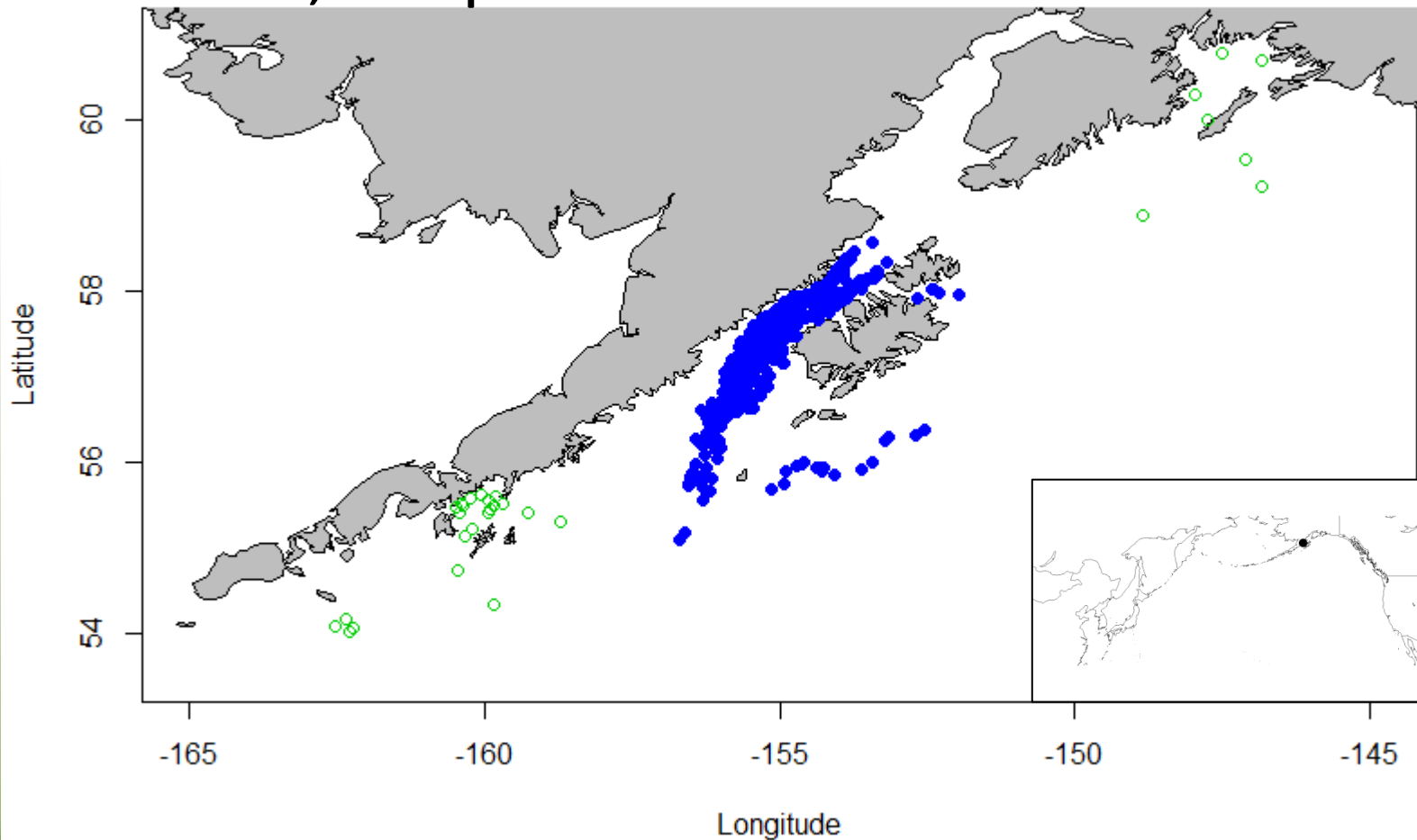


AFSC

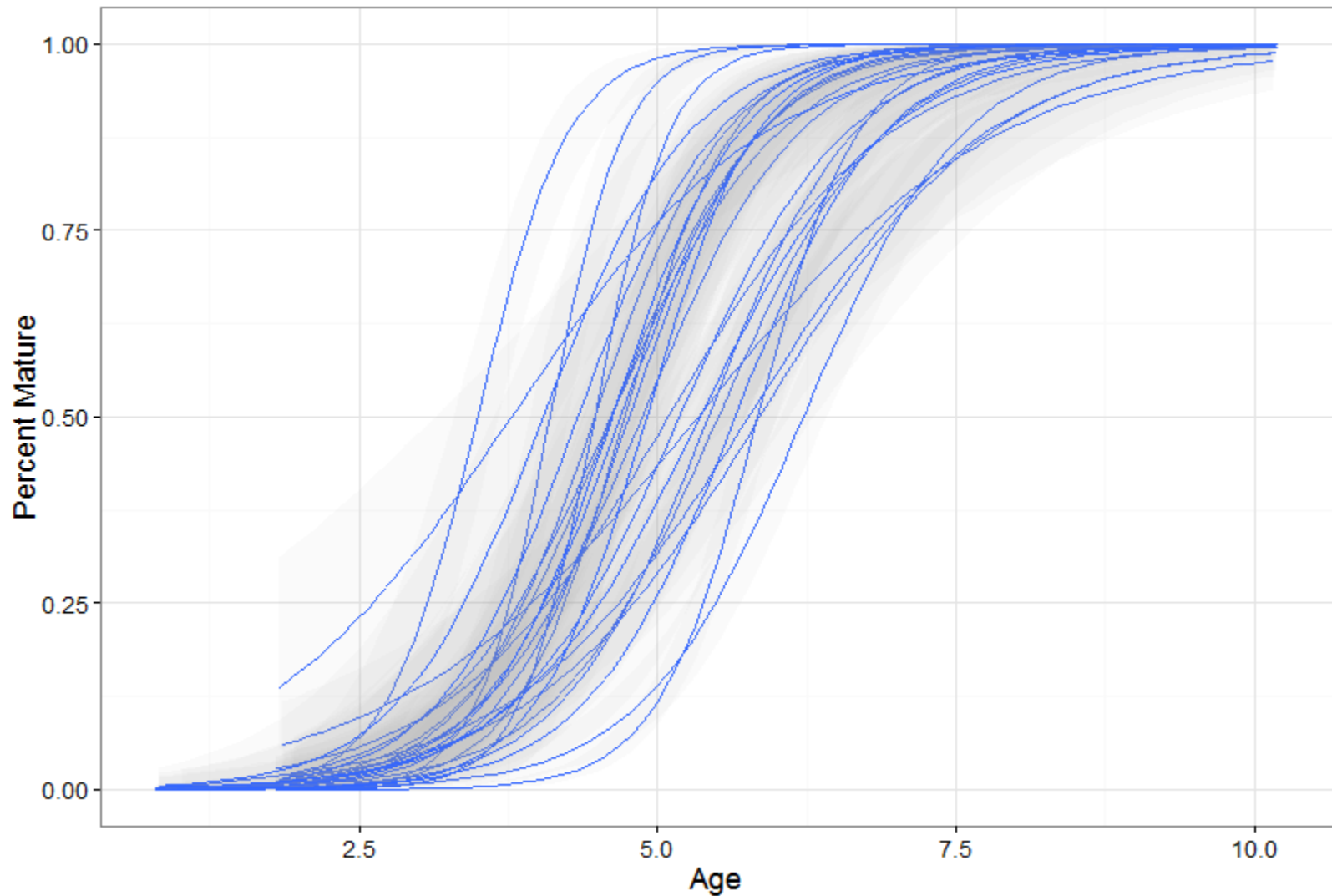
Methods

Visual maturity estimates

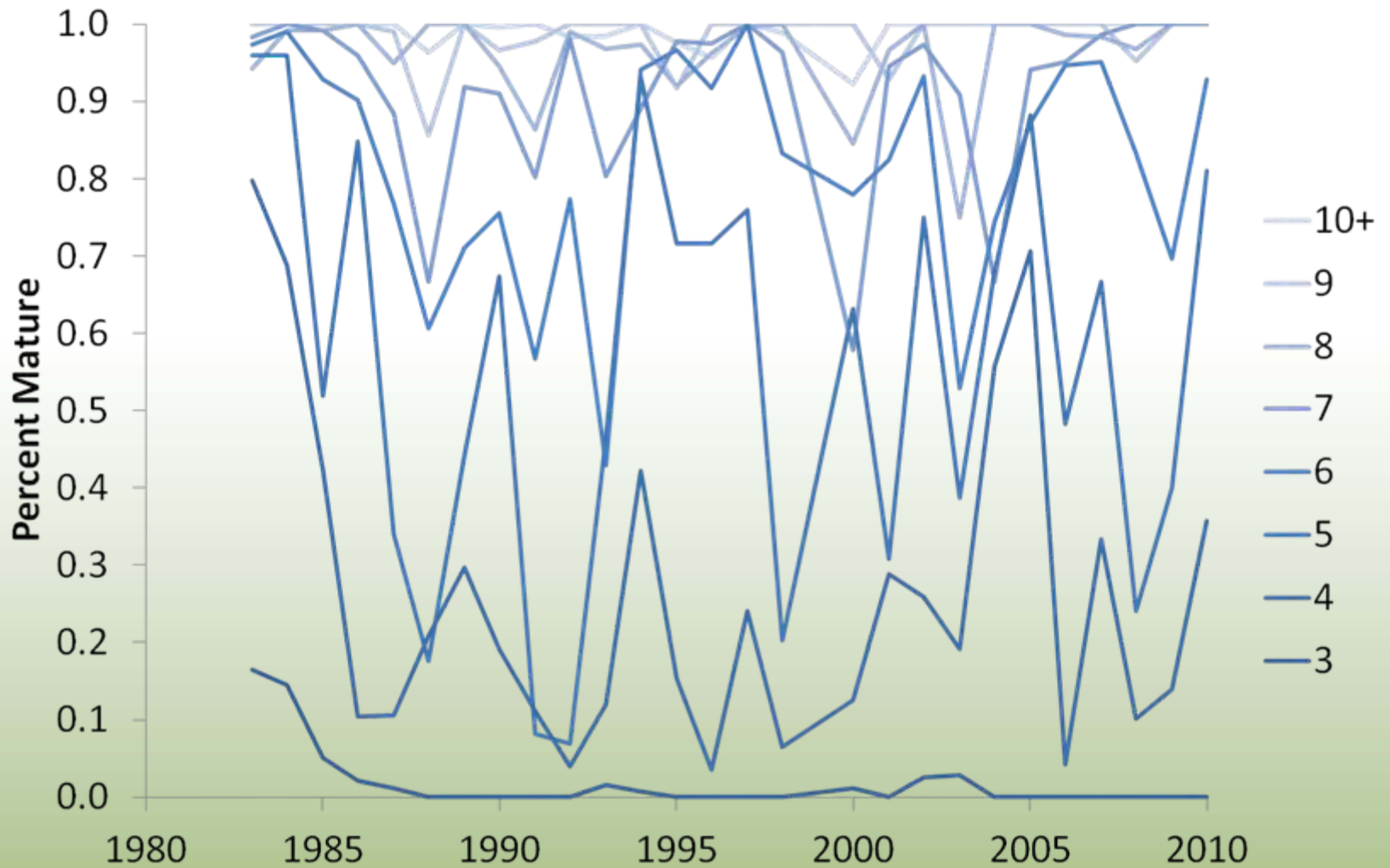
10,344 pollock from 1983 - 2009



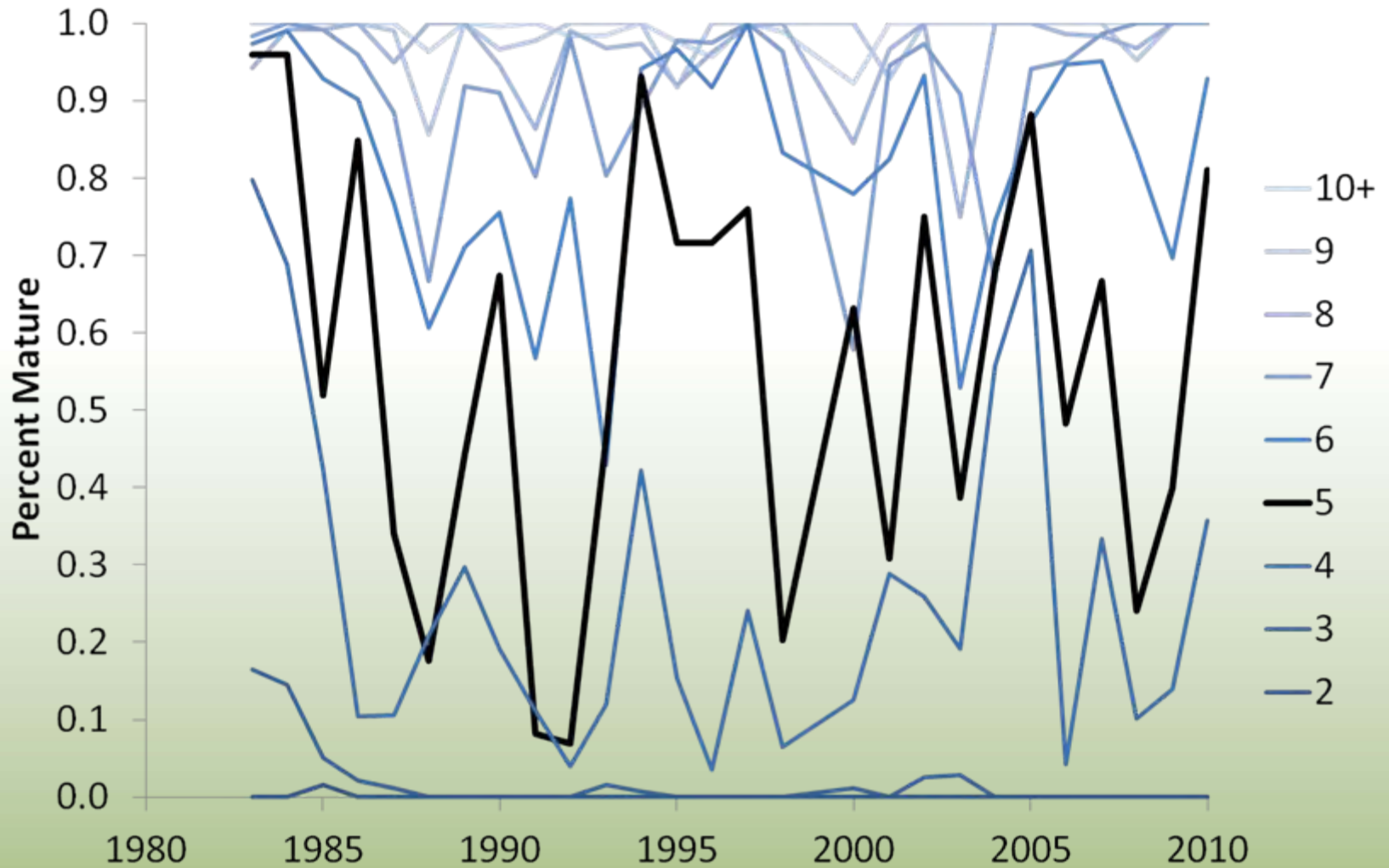
Annual Logistic Regressions



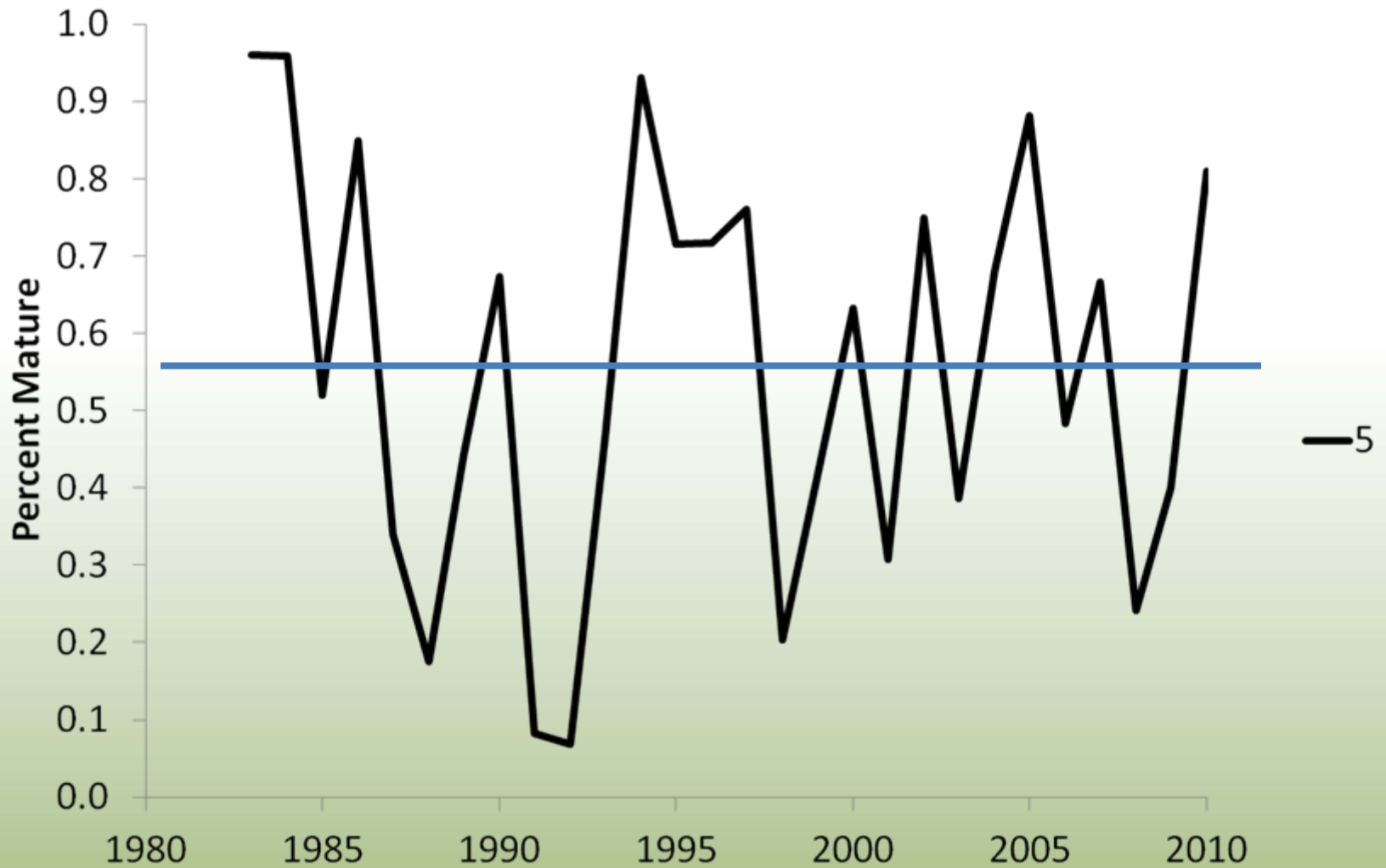
Annual maturity by age



Annual maturity by age

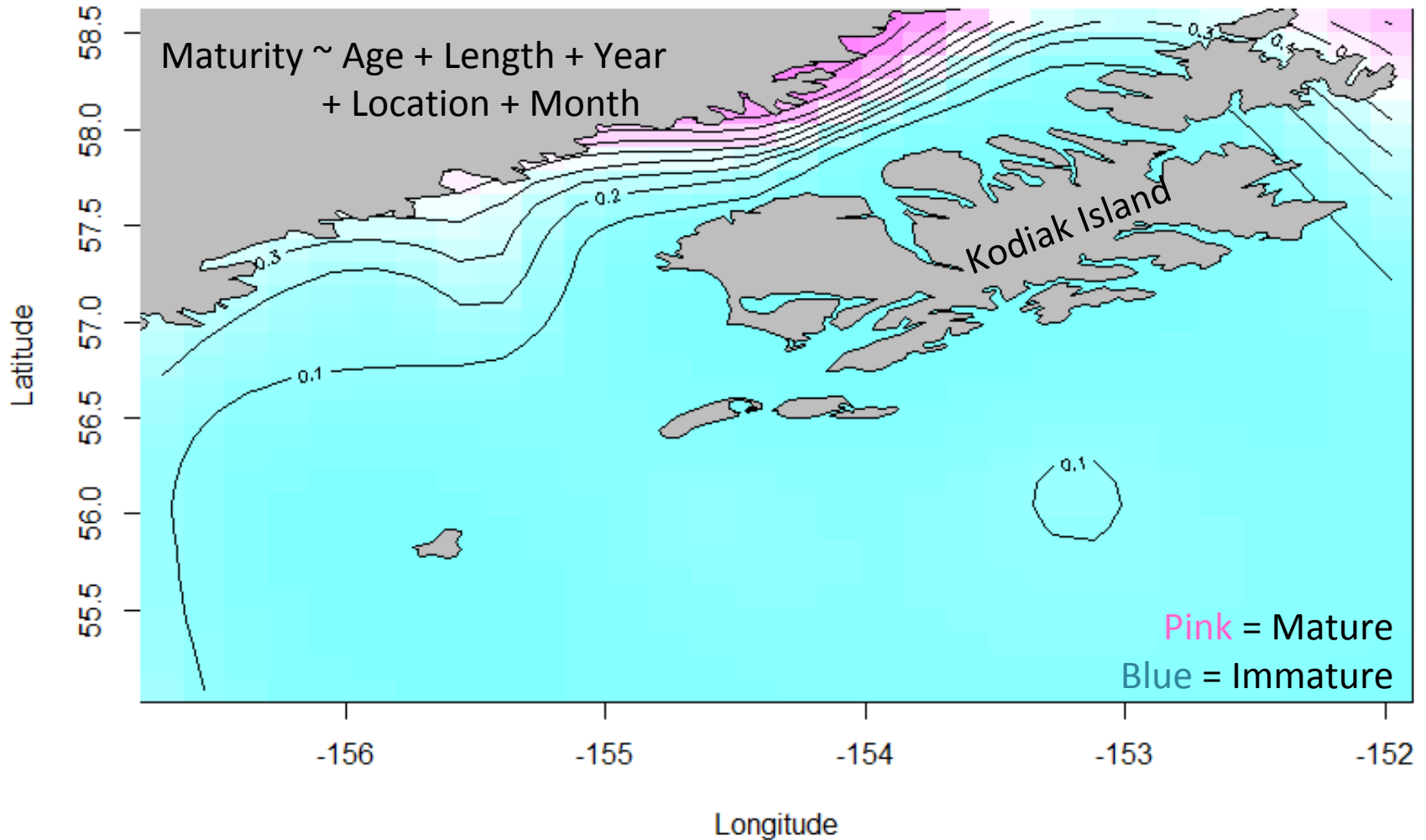


Annual maturity by age

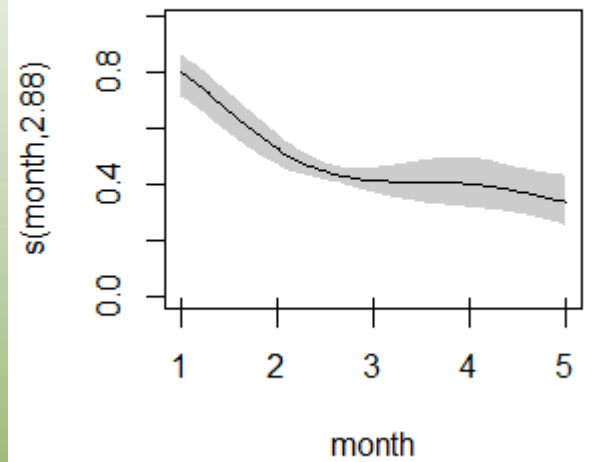
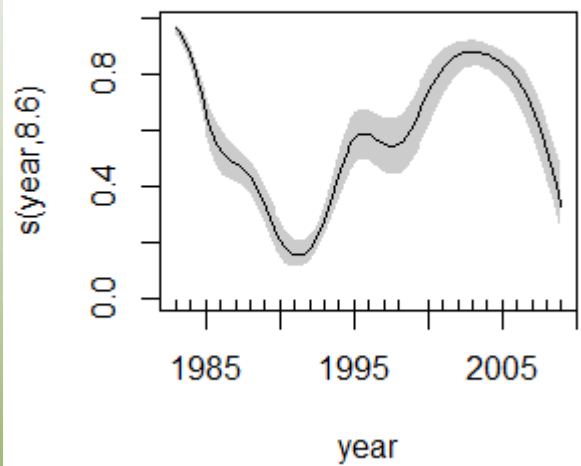
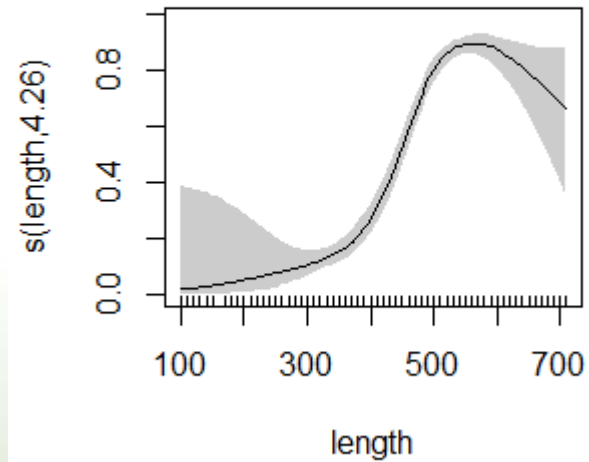
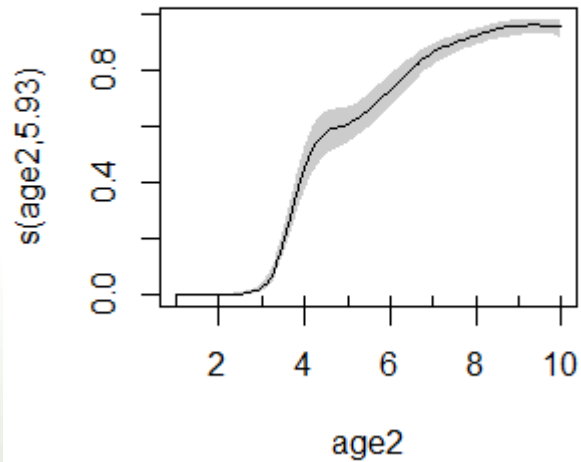


Generalized Additive Model

Pollock Maturity



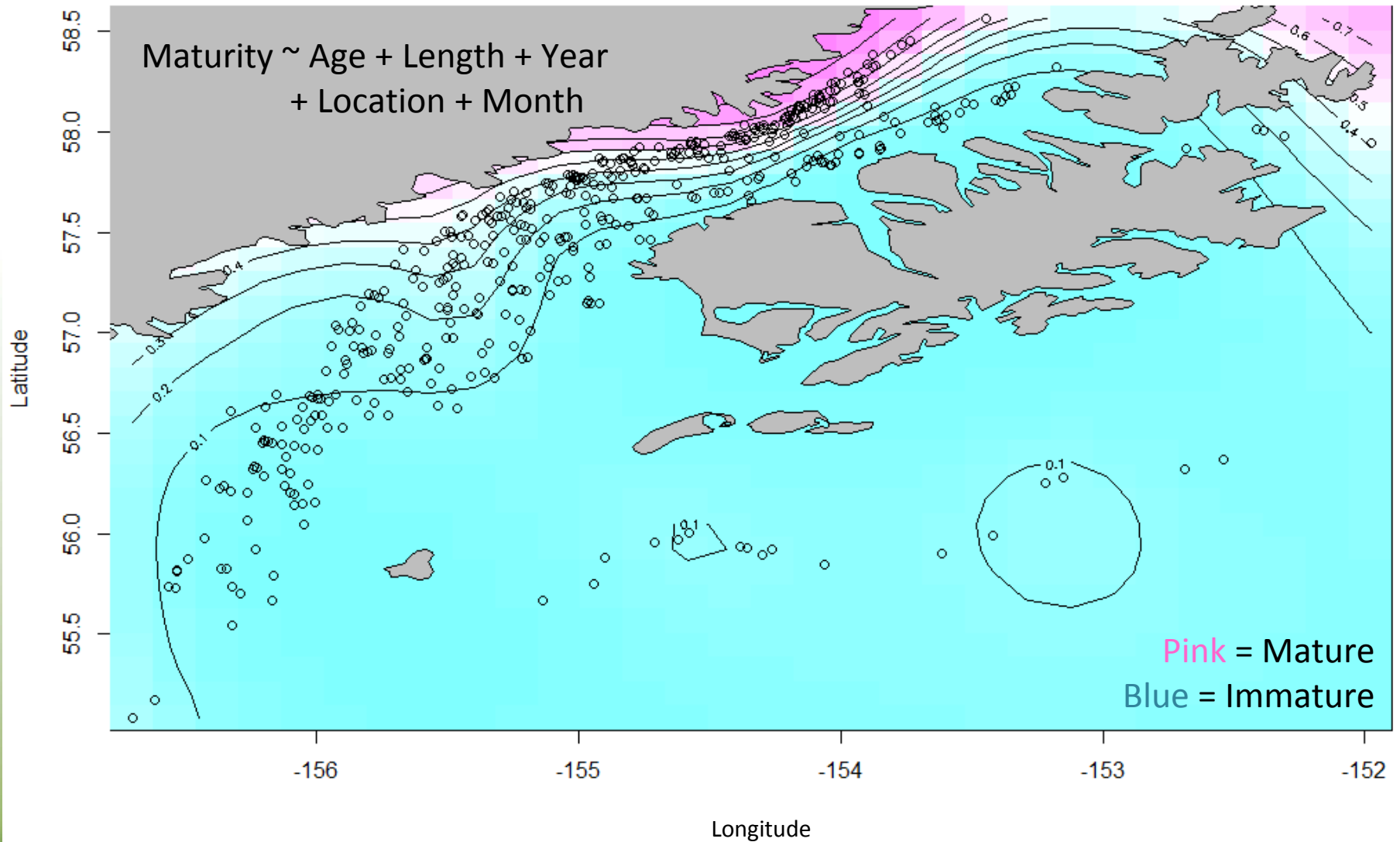
GAM Partial Effects



Generalized Additive Model

Pollock Maturity

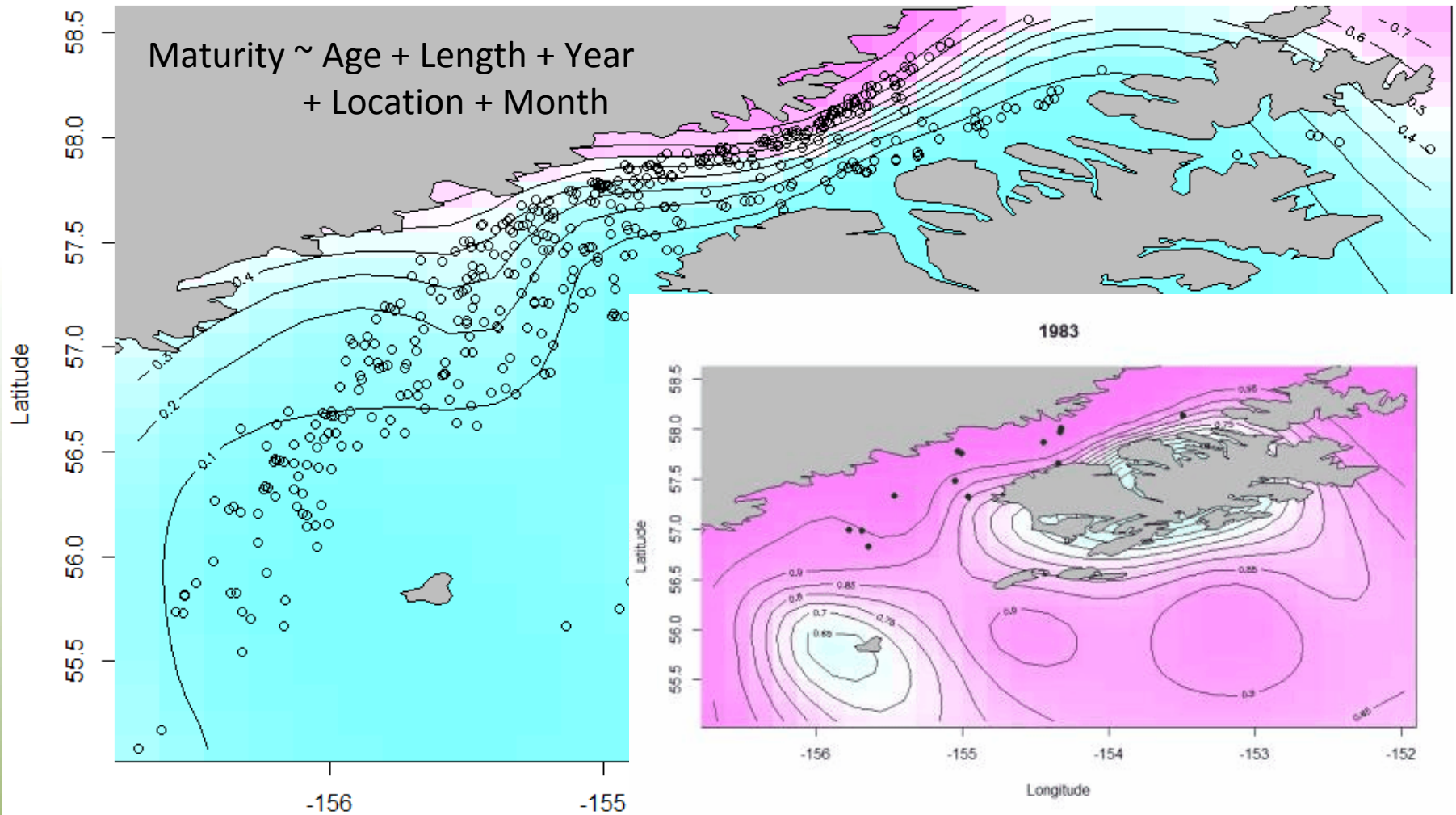
Maturity \sim Age + Length + Year
+ Location + Month



Generalized Additive Model

Pollock Maturity

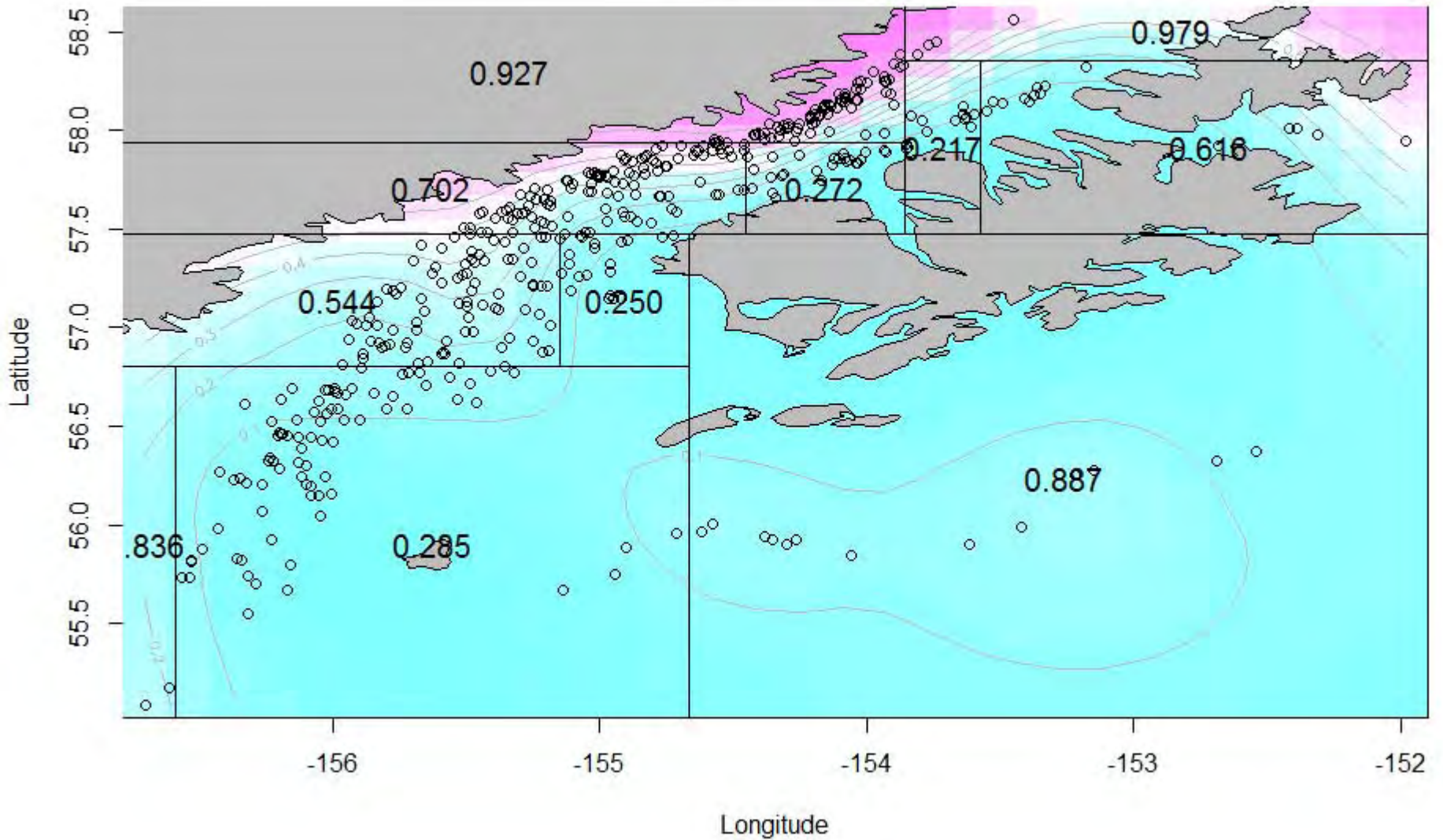
Maturity \sim Age + Length + Year
+ Location + Month



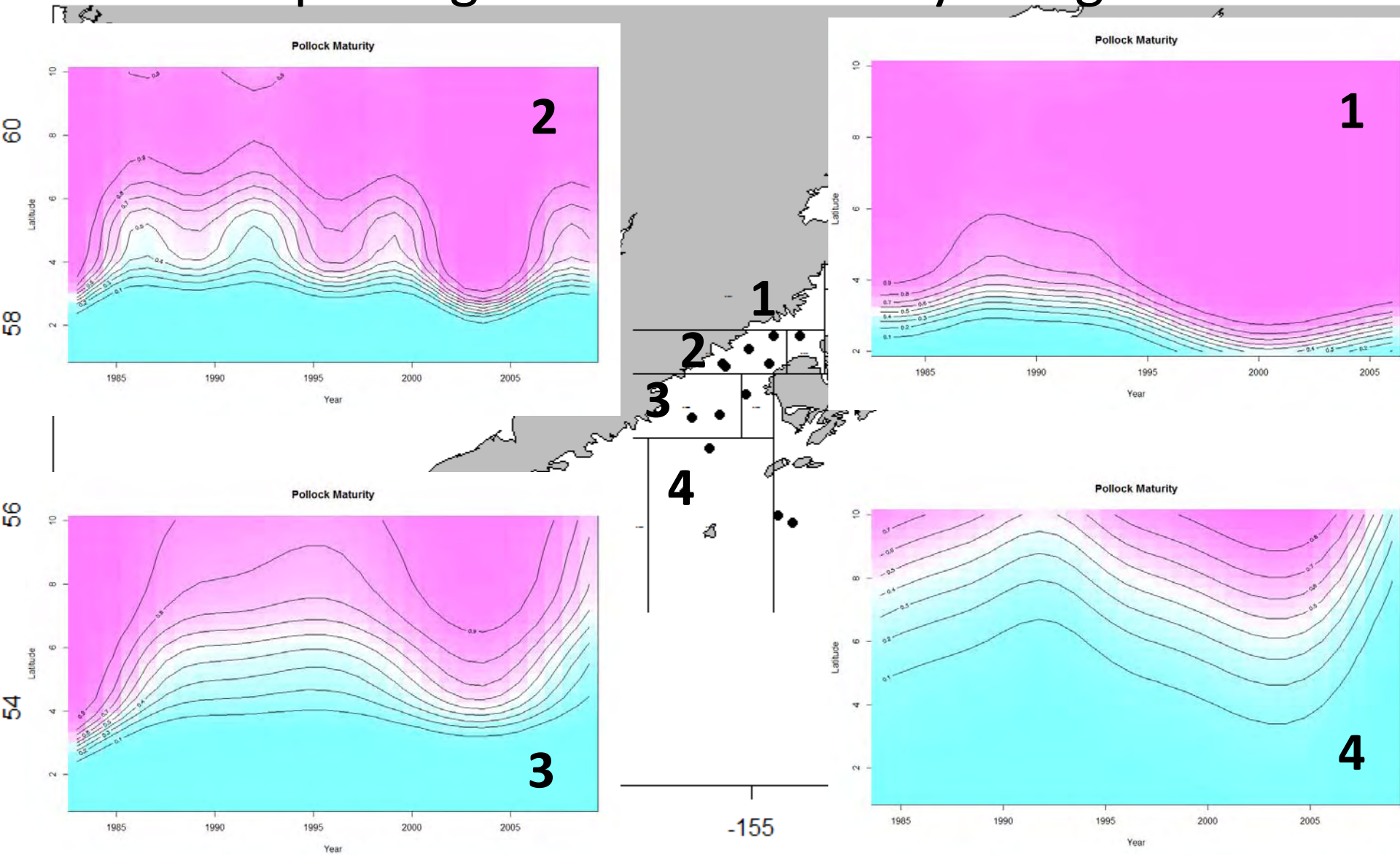
Longitude

CART Model

Pollock Maturity

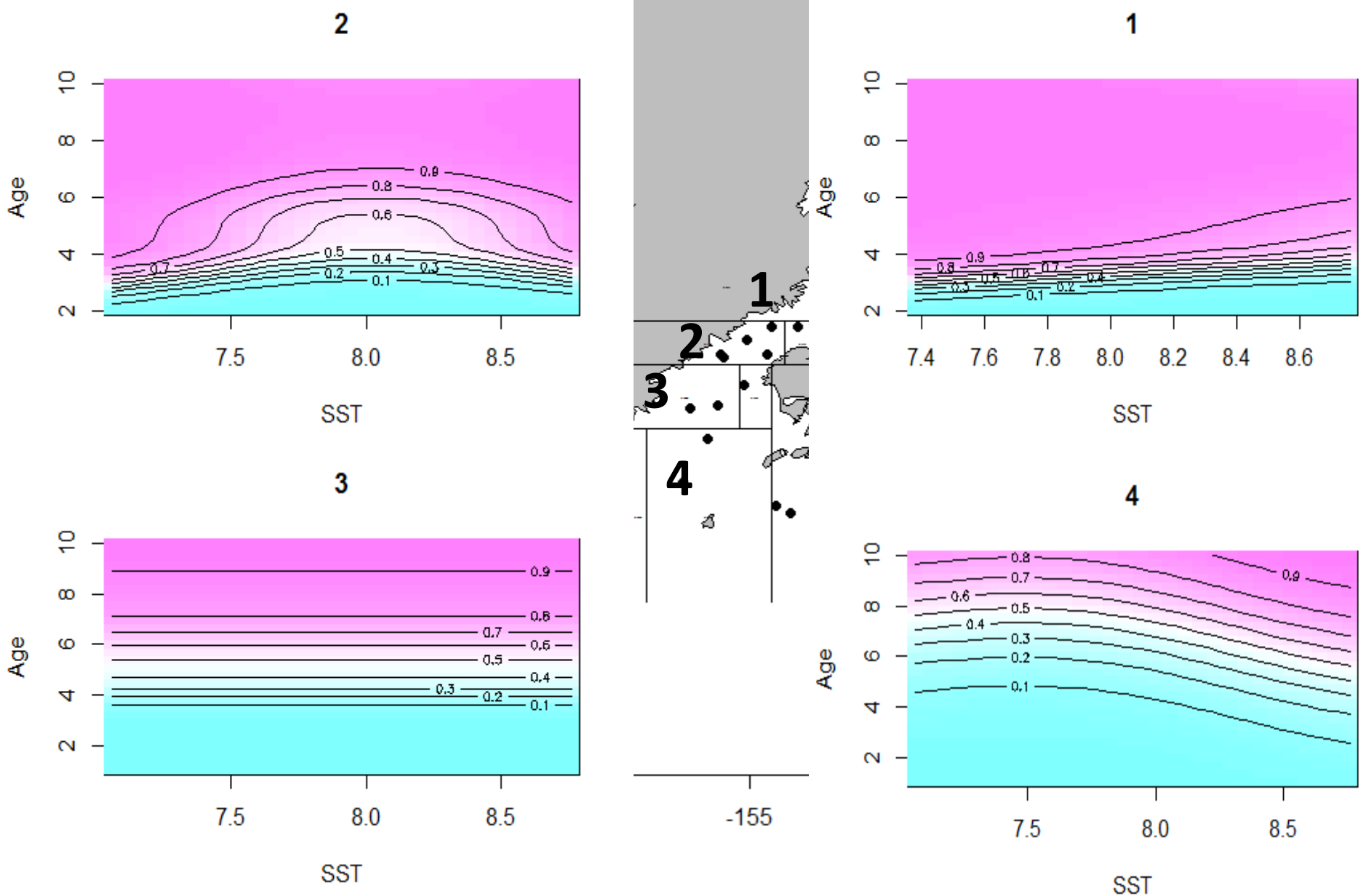


Spatial gradient in maturity-at-age

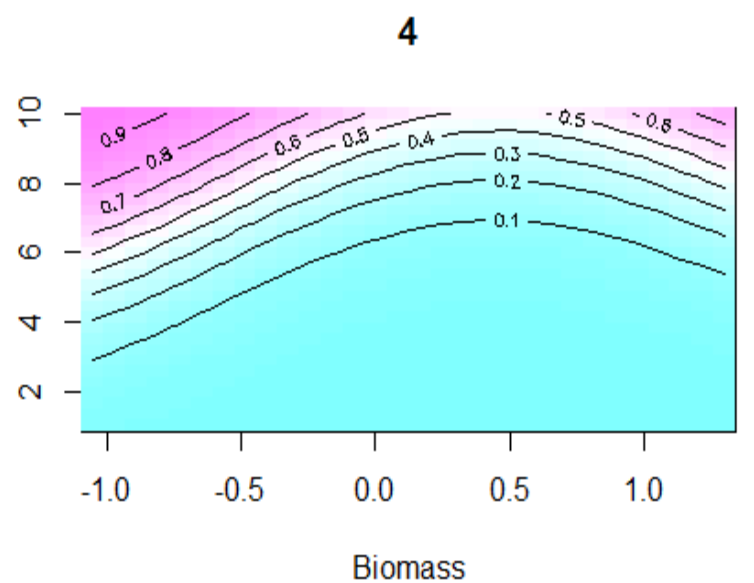
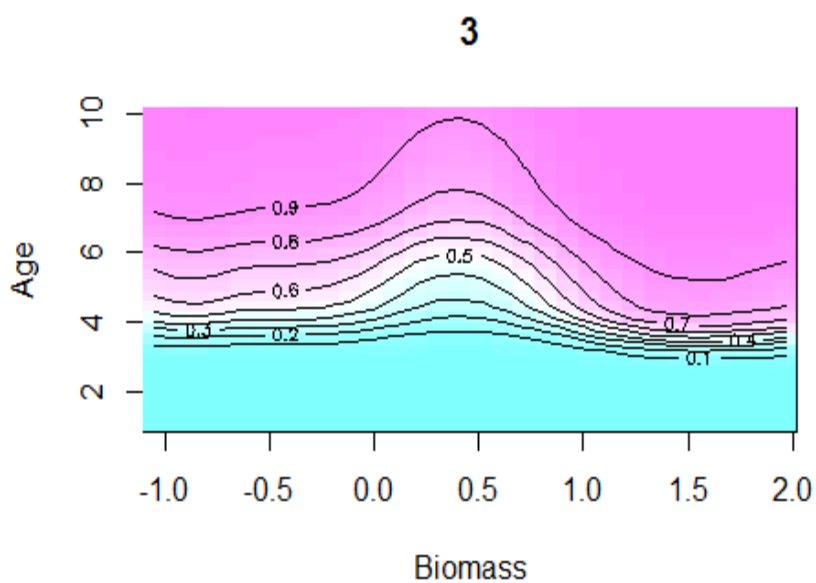
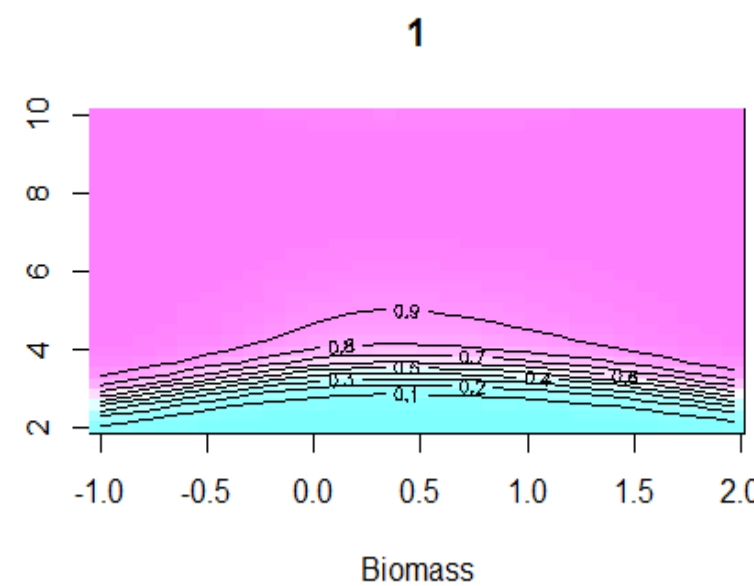
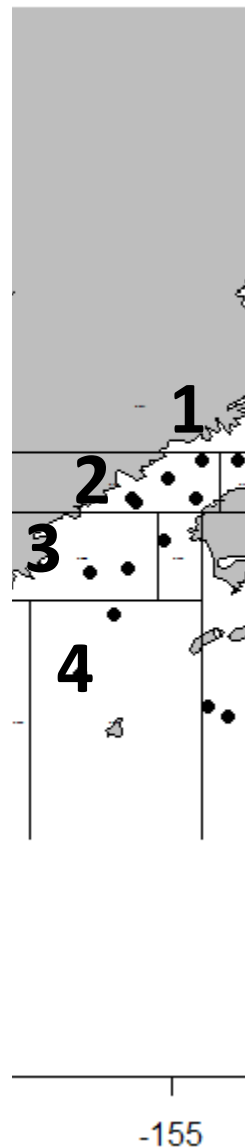
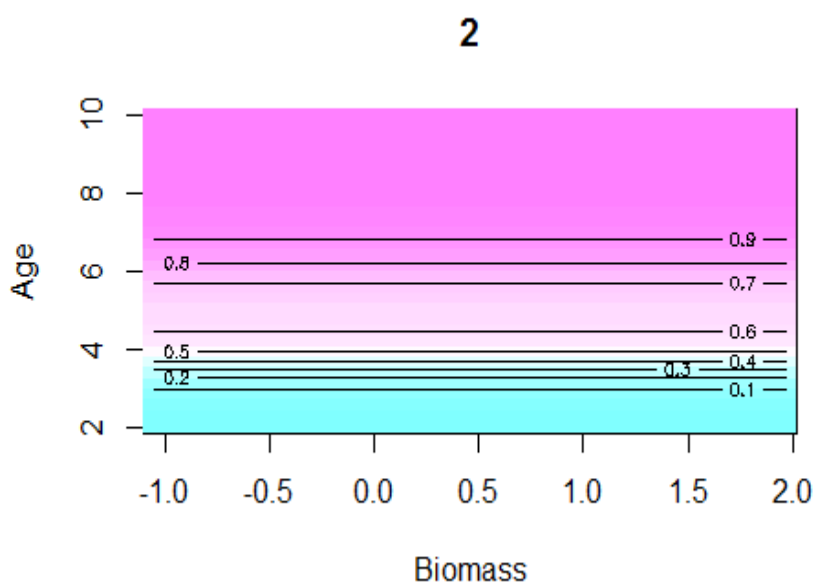


Maturity \sim Age + Length + Year + Month

Spatial gradient in SST effects



Spatial gradient in Biomass effects



Conclusions

- Spatial considerations will improve estimates of SSB
- SST has different influence on maturity, in different locations
- Biomass has a similar trend by location
- Greater environmental and population effects on the periphery of the spawning area

Future Directions

- Overlay maturity model on spatial biomass estimates
- Examine influence of environmental and biological effects on fecundity
- Incorporate variability of maturity and fecundity into a MSE

Acknowledgements

AFSC

Mike Guttormsen

Neal Williamsen

Libby Loggerwell

Susanne McDermott

UAF

Franz Mueter

Vanessa von Biela

