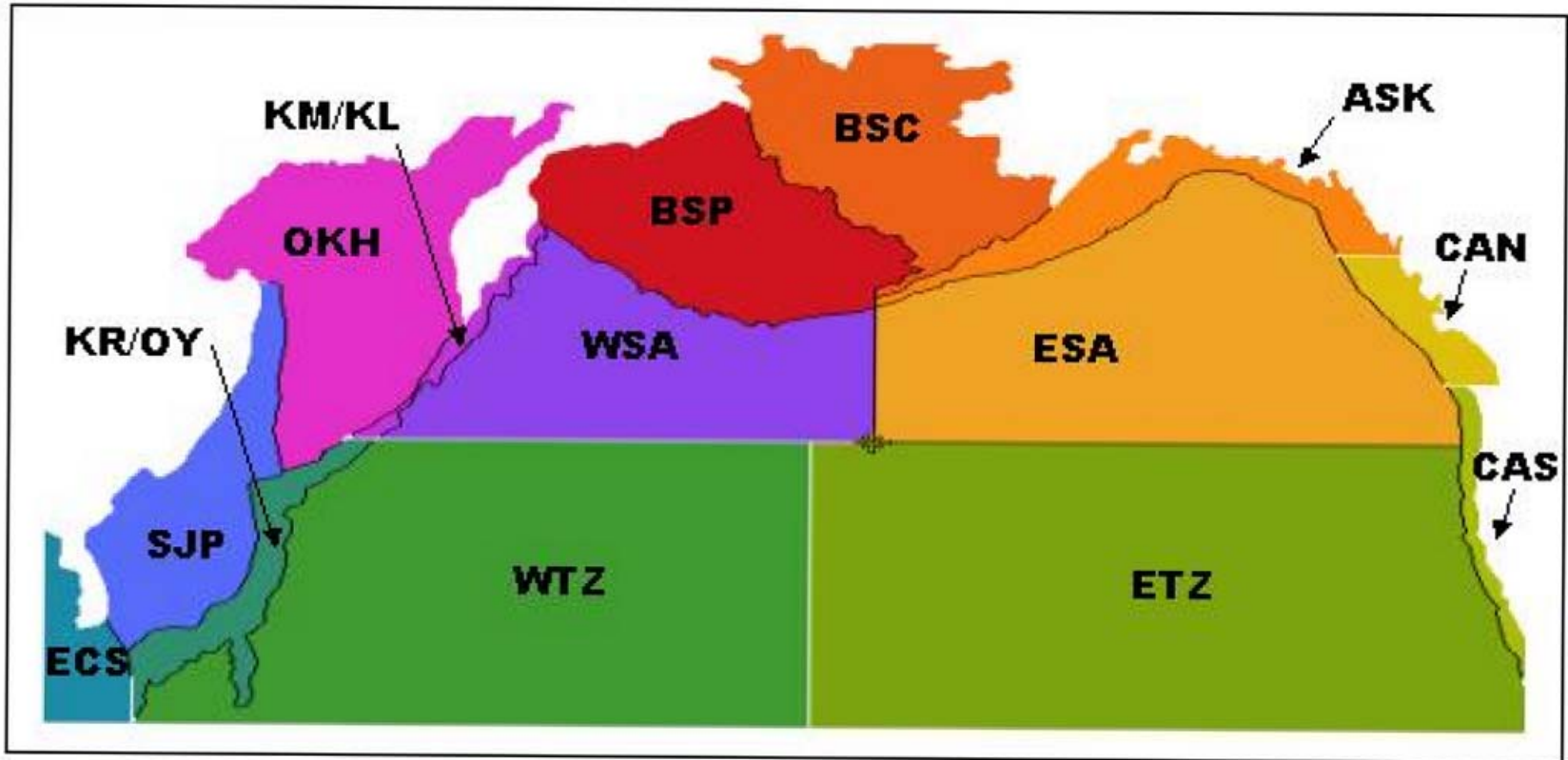


**Seabird Pelagic Data, by PICES Area  
from the  
North Pacific Pelagic Seabird Database**

**Gary Drew, Martin Renner, Kathy  
Kuletz, John Piatt, Bill Sydeman, Ken  
Morgan, George Hunt**

# PICES Regions as used in PICES Sci. Rpt. 14

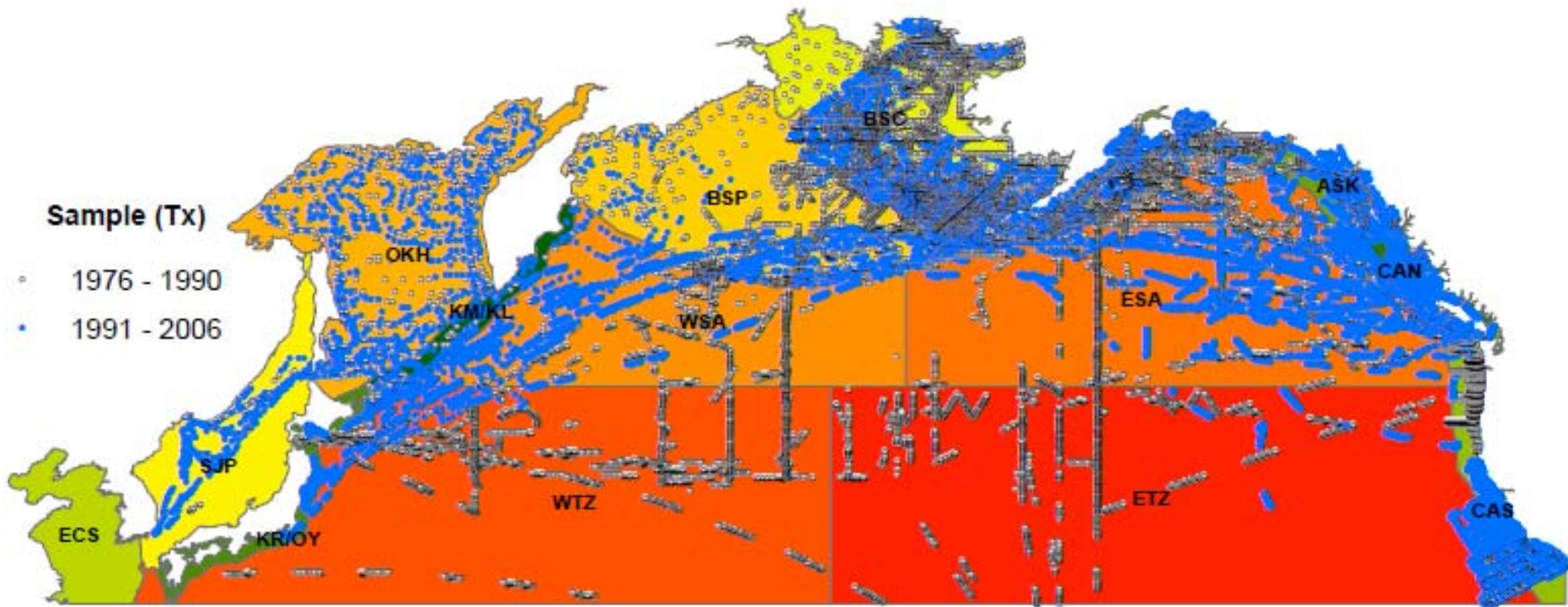


**Fig. 1.** Sub-regions in the PICES region (north of 30°N and including the marginal seas) of the North Pacific Ocean. ASK - Gulf of Alaska Continental Shelf; BSC - Bering Sea Continental Shelf; BSP - Bering Sea Pelagic; CAN - California Current North; CAS - California Current South; ECS - East China Sea; ESA - Eastern Subarctic; ETZ - Eastern Tropical Zone; KM/KL - Kurile Islands Region; KR/OY - Kuroshio/Oyashio Region; OKH - Sea of Okhotsk; SJP - Sea of Japan; WSA - Western Subarctic; WTZ - Western Tropical Zone.

# Transect Activity in Summer 1999-2009

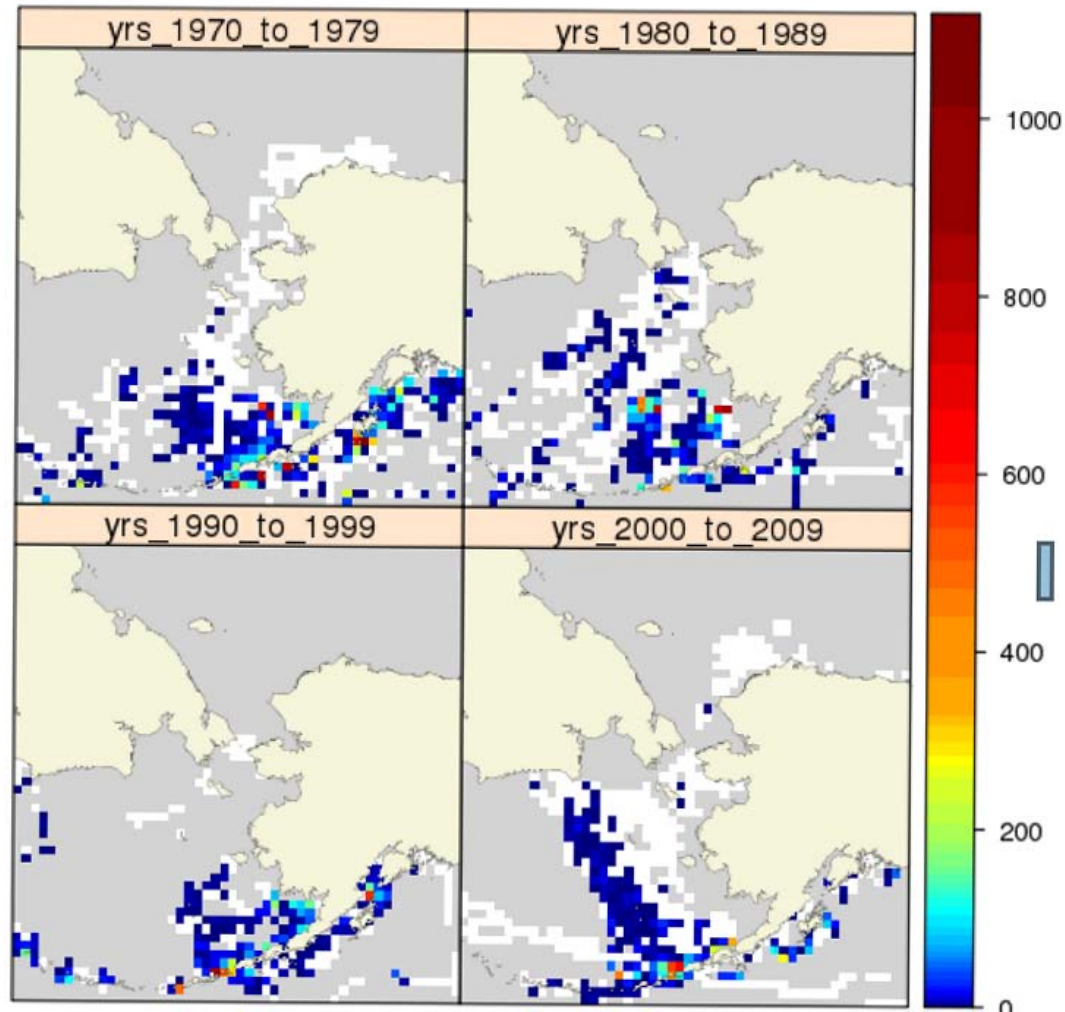
<b>Subregion</b>	<b>Samples (TX)</b>	<b>Sample Area (km<sup>2</sup>)</b>	<b>Birds Counted</b>
<b>ASK</b>	<b>29,176</b>	<b>52,909</b>	<b>543759</b>
<b>BSC</b>	<b>56,855</b>	<b>41,734</b>	<b>1017729</b>
<b>BSP</b>	<b>25,183</b>	<b>19,393</b>	<b>303759</b>
<b>CAN</b>	<b>5,049</b>	<b>3,156</b>	<b>29043</b>
<b>CAS</b>	<b>8,560</b>	<b>4,698</b>	<b>70744</b>
<b>ESA</b>	<b>9,656</b>	<b>6,423</b>	<b>26830</b>
<b>ETZ</b>	<b>1,007</b>	<b>450</b>	<b>3225</b>
<b>KM/KL</b>	<b>790</b>	<b>461</b>	<b>71411</b>
<b>KR/OY</b>	<b>1,658</b>	<b>1,078</b>	<b>119301</b>
<b>WSA</b>	<b>3,110</b>	<b>2,127</b>	<b>18071</b>
<b>WTZ</b>	<b>730</b>	<b>436</b>	<b>2116</b>
<b>ECS</b>	<b>????</b>	<b>????</b>	<b>????</b>
<b>SJP</b>	<b>????</b>	<b>????</b>	<b>????</b>

# Distribution of Seabird Transects by PICES AREA

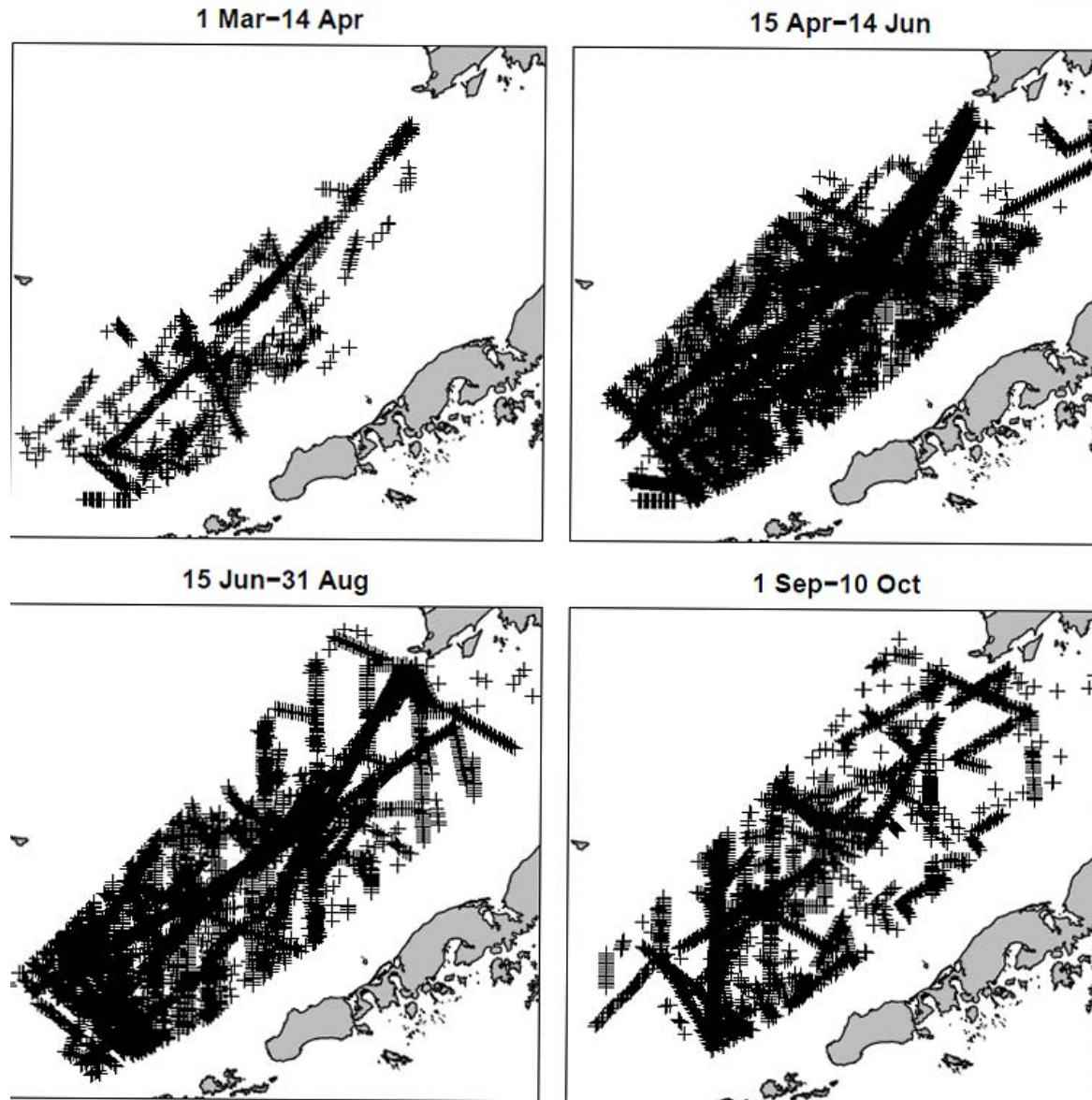


# Data Available: Gulf of Alaska, Eastern Bering Sea and Chukchi Sea all seasons

all shearwaters



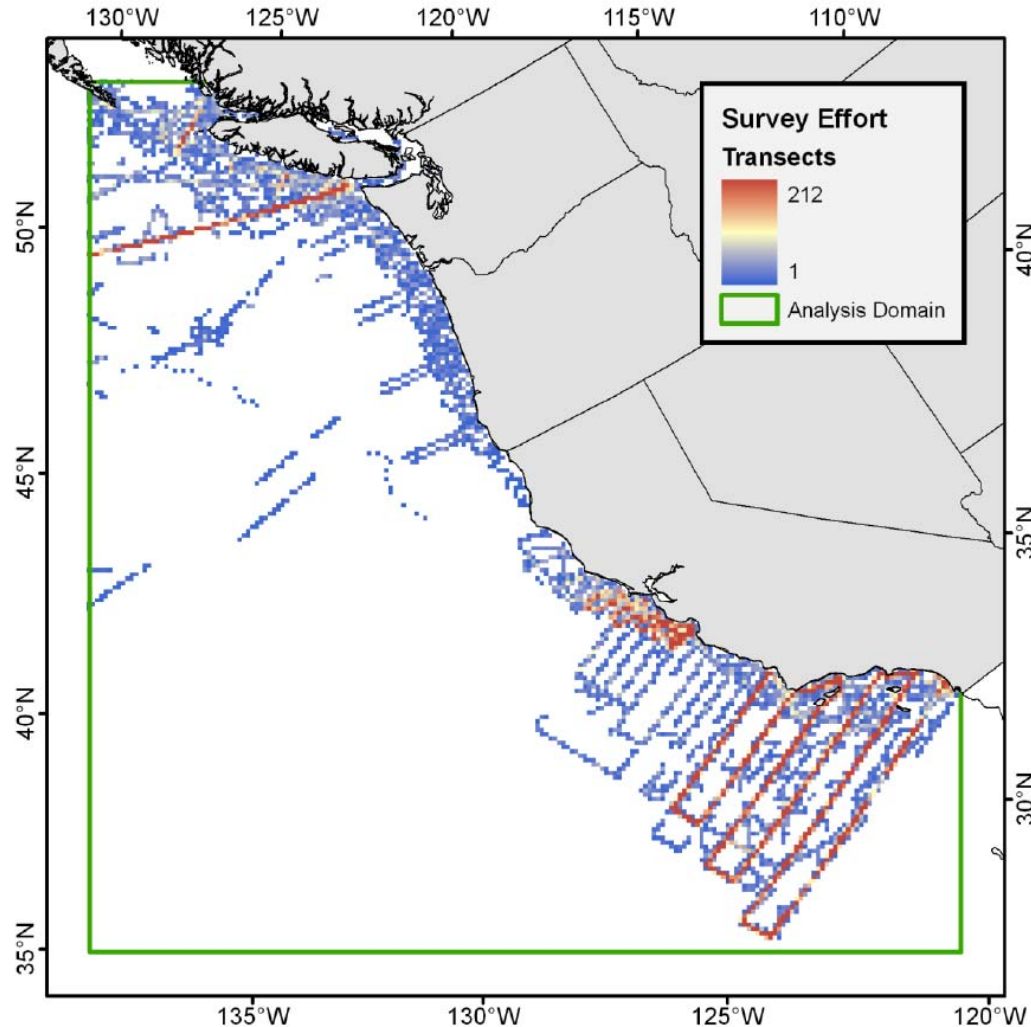
# Seasonal Distribution of Sampling Effort Southeastern Bering Sea 1975 - 2010



# Numbers of Transect Segments 1975- 2010 by month

	Jan	Feb	Mar	Apr	May	June	July	Aug	Sept	Oct	Nov	Dec
Cal S	9485	6585	2862	21210	11336	2307	15539	6450	3563	11325	7611	250
Can	253	5407	881	633	4071	10682	2269	4359	3793	955	77	27
GOA	97	4789	3764	1022	2499	3530	5791	4036	3849	1371	1589	496
EBS	8	229	3565	7759	12662	18752	21092	10598	11233	2778	866	266
CHU	0	0	0	1	0	2	236	2155	2565	740	379	0

# Number of transects per 10 x 10 km Square in the California Current System







# Numbers of Transects by Decade for PICES Regions in Summer (Renner data report)

	1975 - 1979	1980 - 1989	1990 - 1999	2000 - 2010	2010- 2020
Cal So	61	2719	12461	9055	
Can	143	68	7449	9650	
GOA	1354	1710	4947	5324	22
EBS	2948	7591	5432	29078	5393
CHUK	622	20	1	1217	22

<b>Species</b>	<b>Abundance</b>	<b>Individual weight (t)</b>	<b>Biomass (t)</b>
Fin whale	13,105	45	589,725
Minke whale	19,209	2.5	48,023
Humpback whale	232	27	6,264
Gray whale	100	30	3
North Pacific right whale	922	90	82,980
Killer whale	721	4.5	3,245
Sperm whale	86	40	3,440
Dall's porpoise	316,646	0.17	53,830
Harbour porpoise	6,517	0.065	424
Pacific white-sided dolphin	27,759	0.15	4,164
Baird's beaked whale	660	9	5,940
Other beaked whales	159	2.5	398