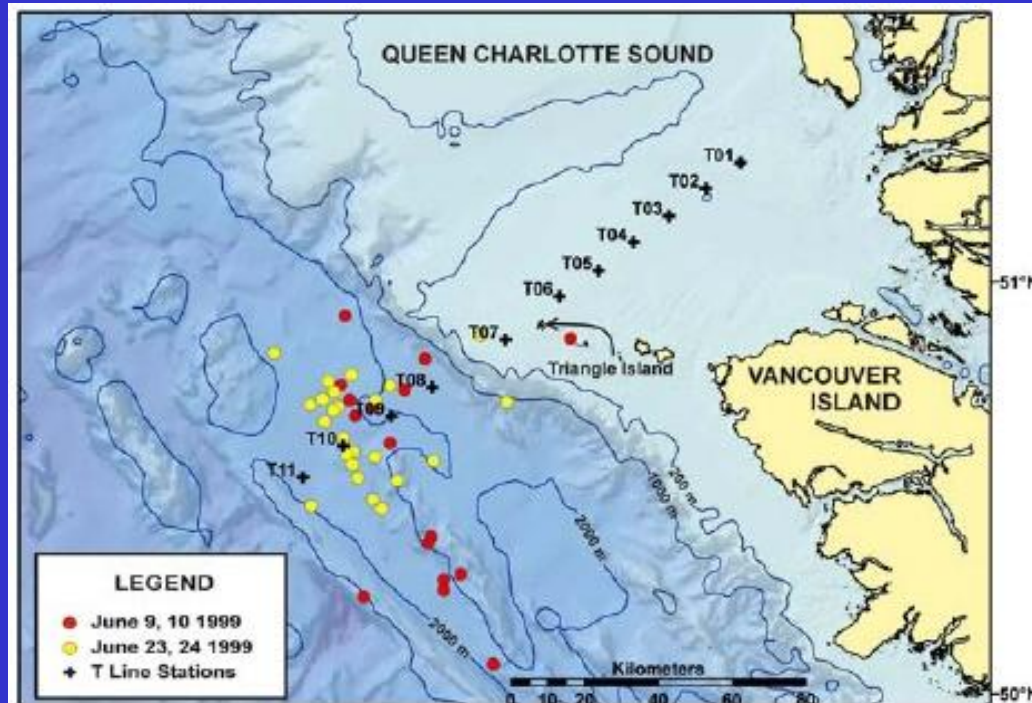


Interannual variation in zooplankton prey distribution determines marine breeding distributions of Cassin's Auklet in the proposed Scott Islands National Marine Wildlife Area in Canada

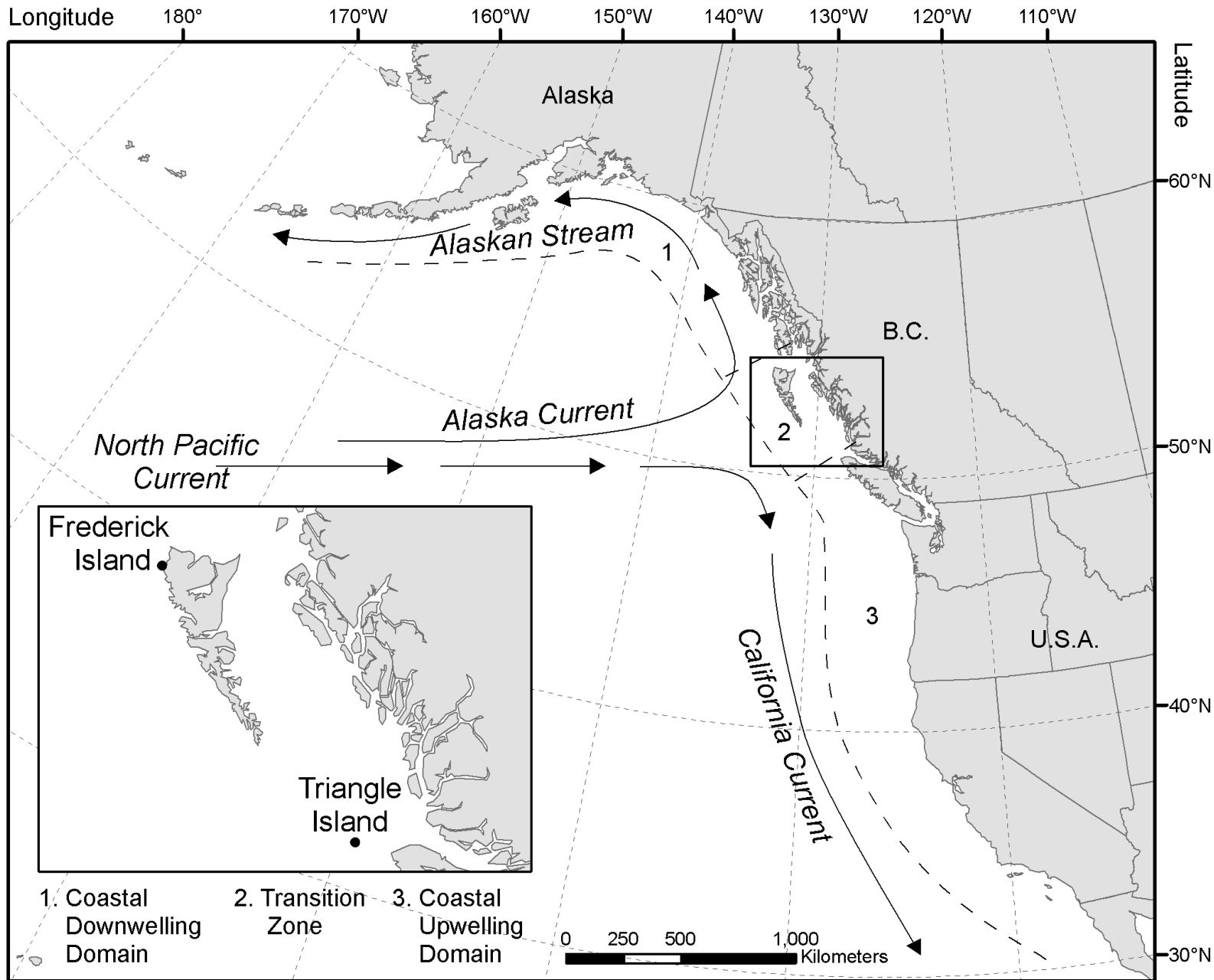


Bertram, Mackas, Boyd, Ryder, Welch Galbraith & Hedd

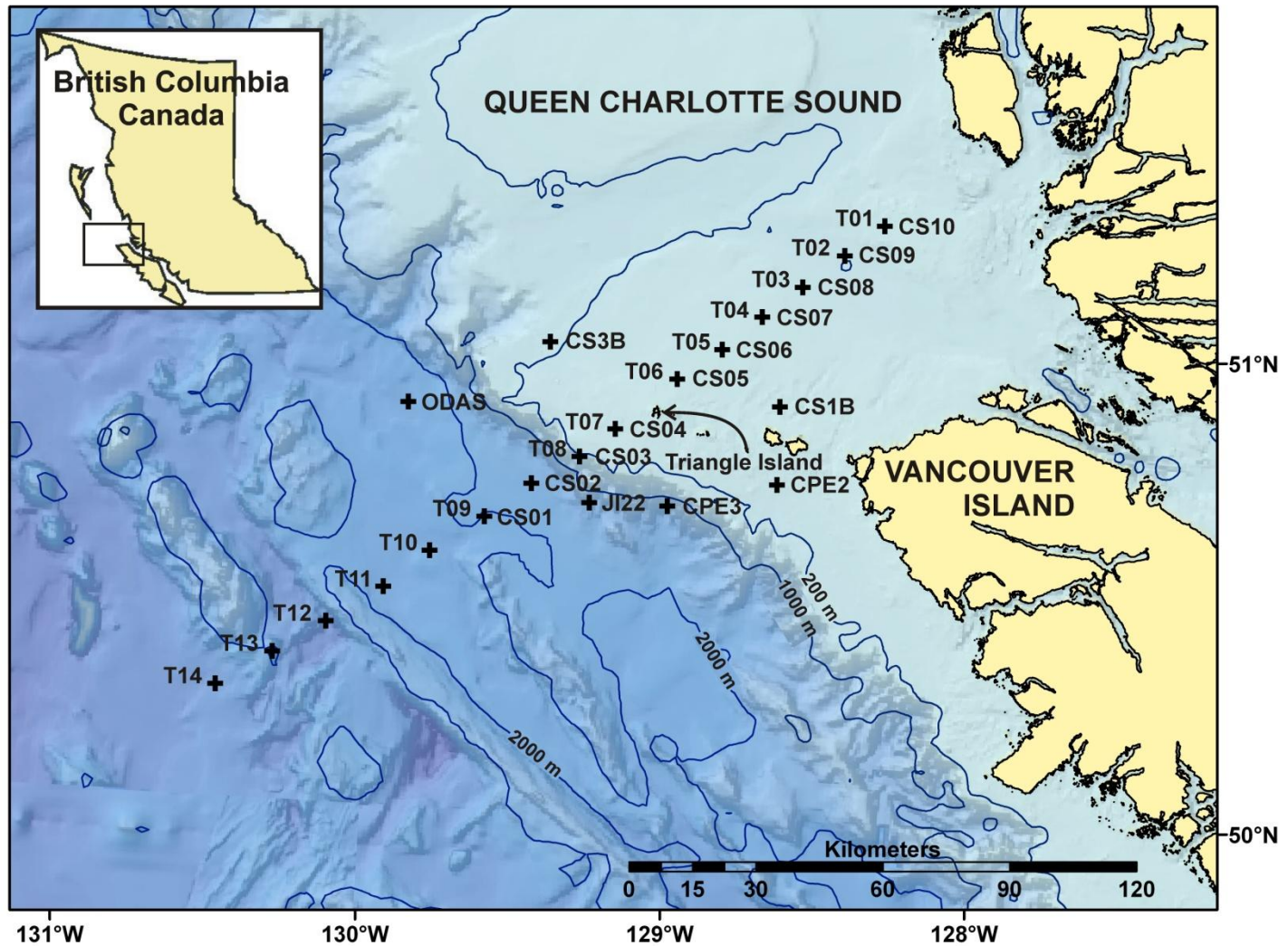
PICES Meeting, 11 October 2013, Nanaimo, BC, Canada

Nestucca Oil Spill Resource Damage Trust Fund

- Grant 1: 1998-2002. “Oil and Seabirds on Coastal Vancouver Island: The Power of Information for Impact Assessment and Response: A Proposal to Secure a Useful Product from the Remaining Nestucca Trust Funds” Bertram, D. & G. Kaiser (CWS)
- Grant 2: 1998-2002 “DFO/CWS Integrated Ecosystems Investigation of Marine Prey Population Distribution, Availability and Abundance in the Ocean Area off Northern Vancouver Island”. Bertram, D., D. Mackas (DFO/IOS) and D. Welch (DFO/PBS)



Ship-based DFO zooplankton sampling stations

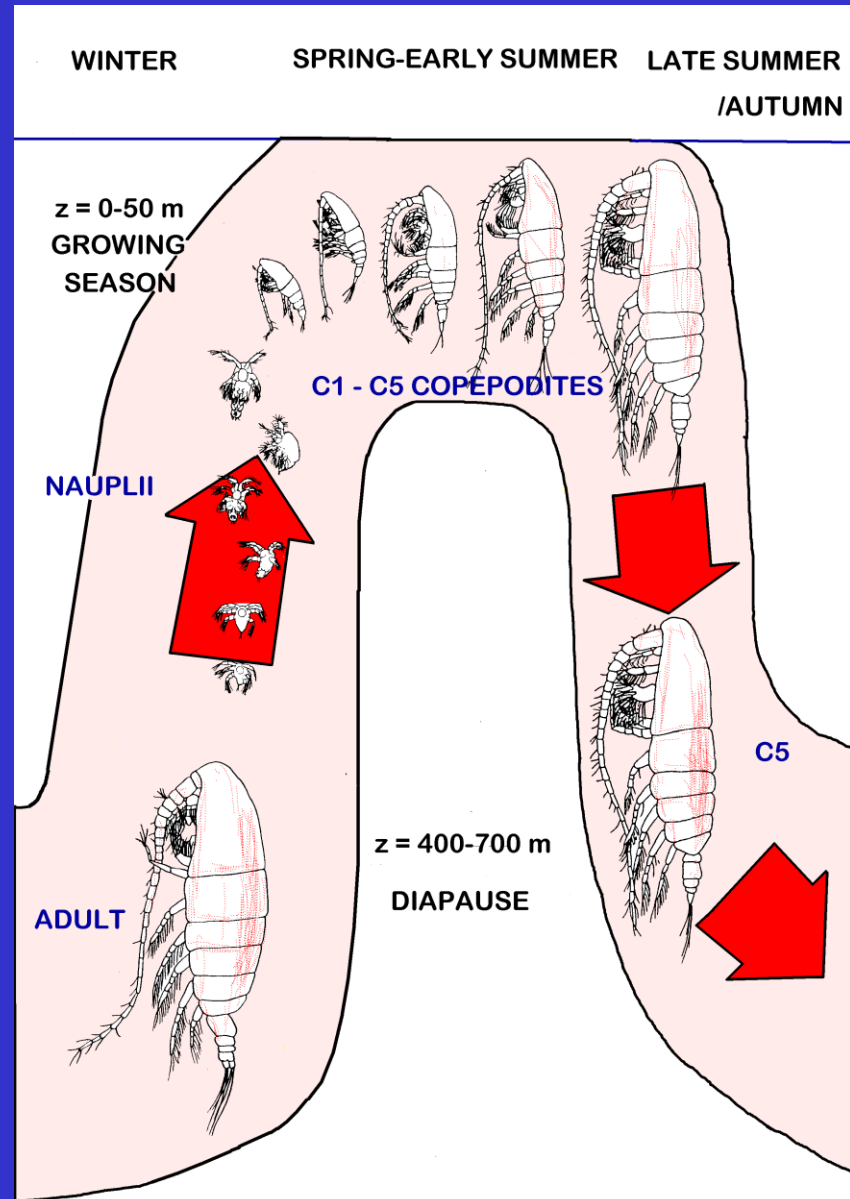


Seasonal life cycle of *Neocalanus plumchrus*

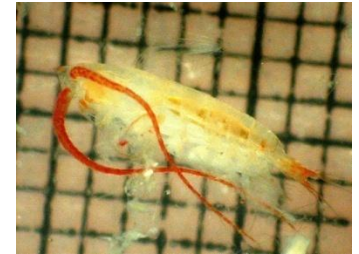
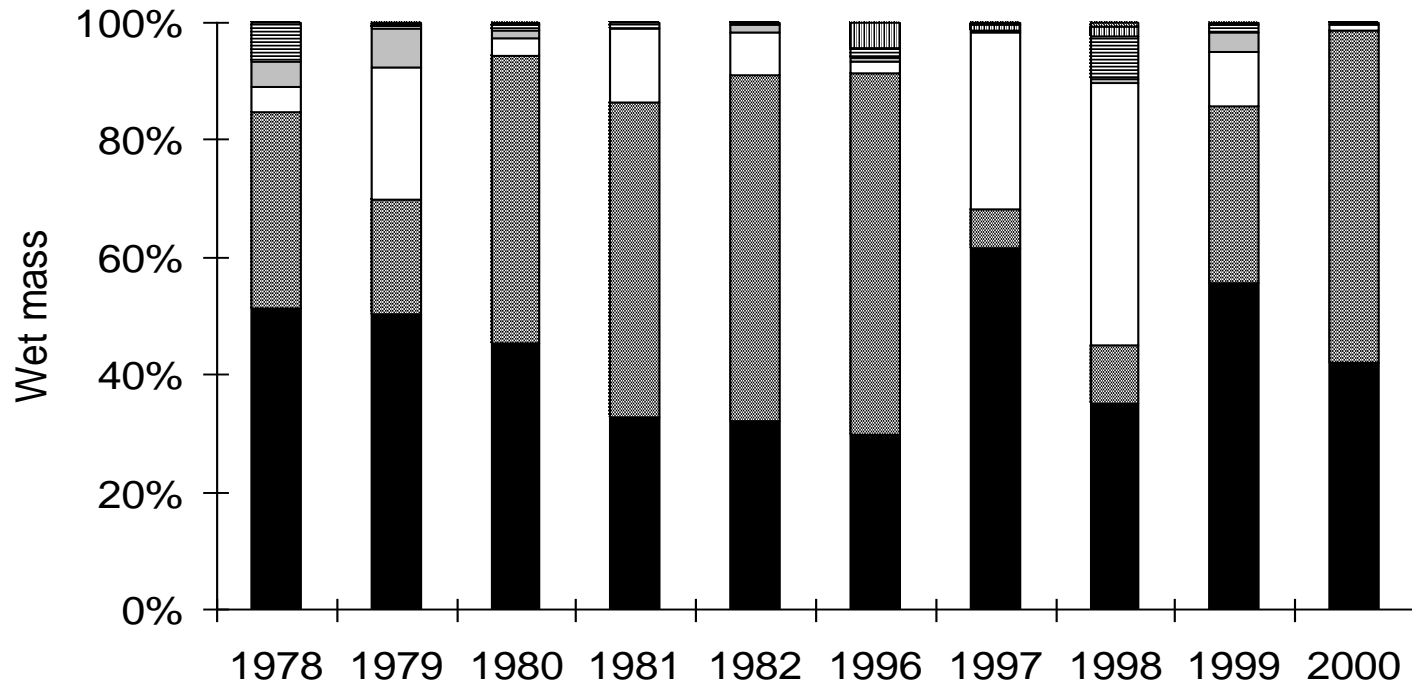


Mackas et al. 1998. CJFAS 55: 1878-1893.

A highly profitable prey for Cassin's Auklet



Copepod *Neocalanus cristatus* is a key prey



99% cV



Radio attachment to breeding birds

tissues forms around the anchor.

9. Release bird.

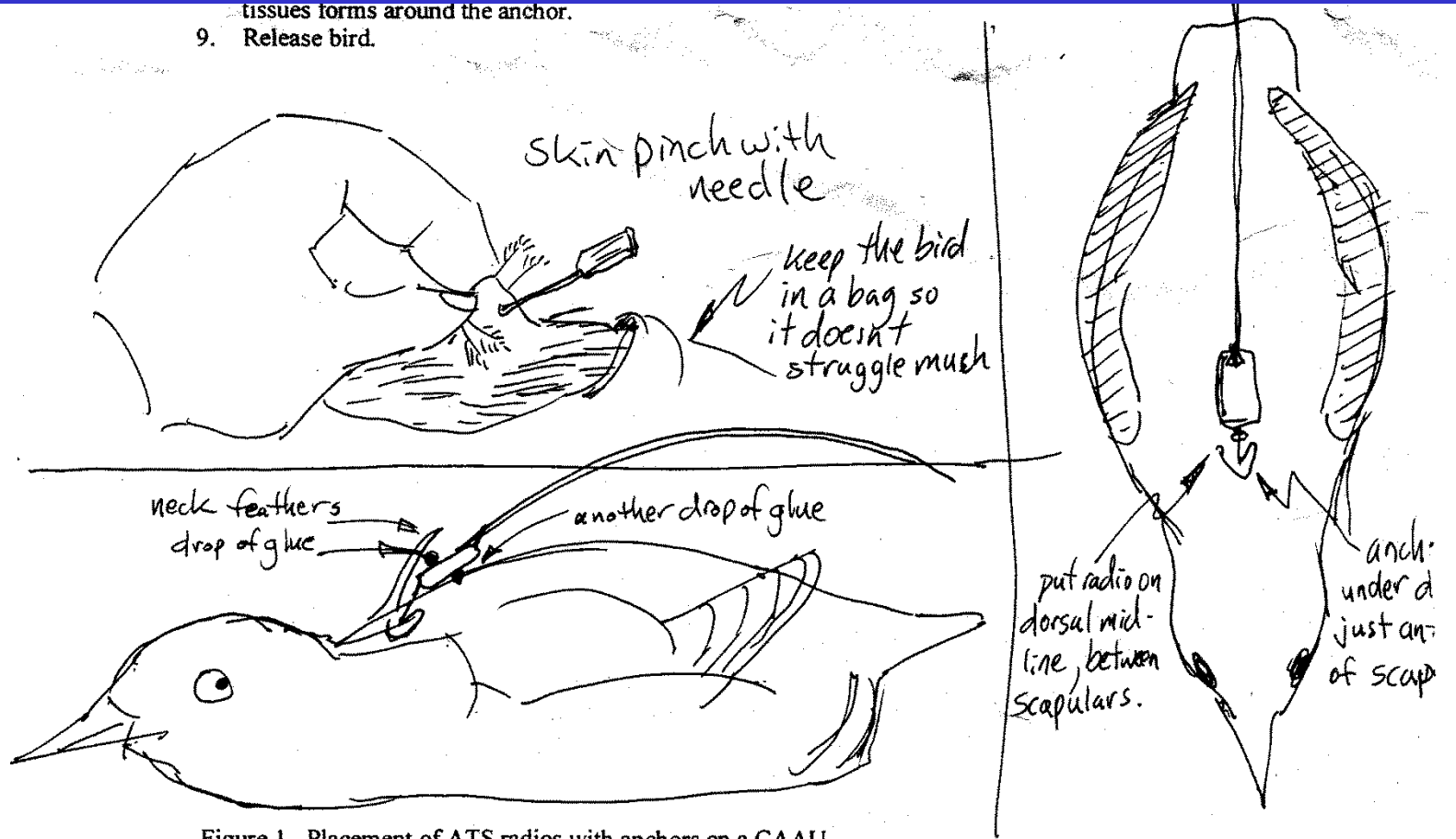
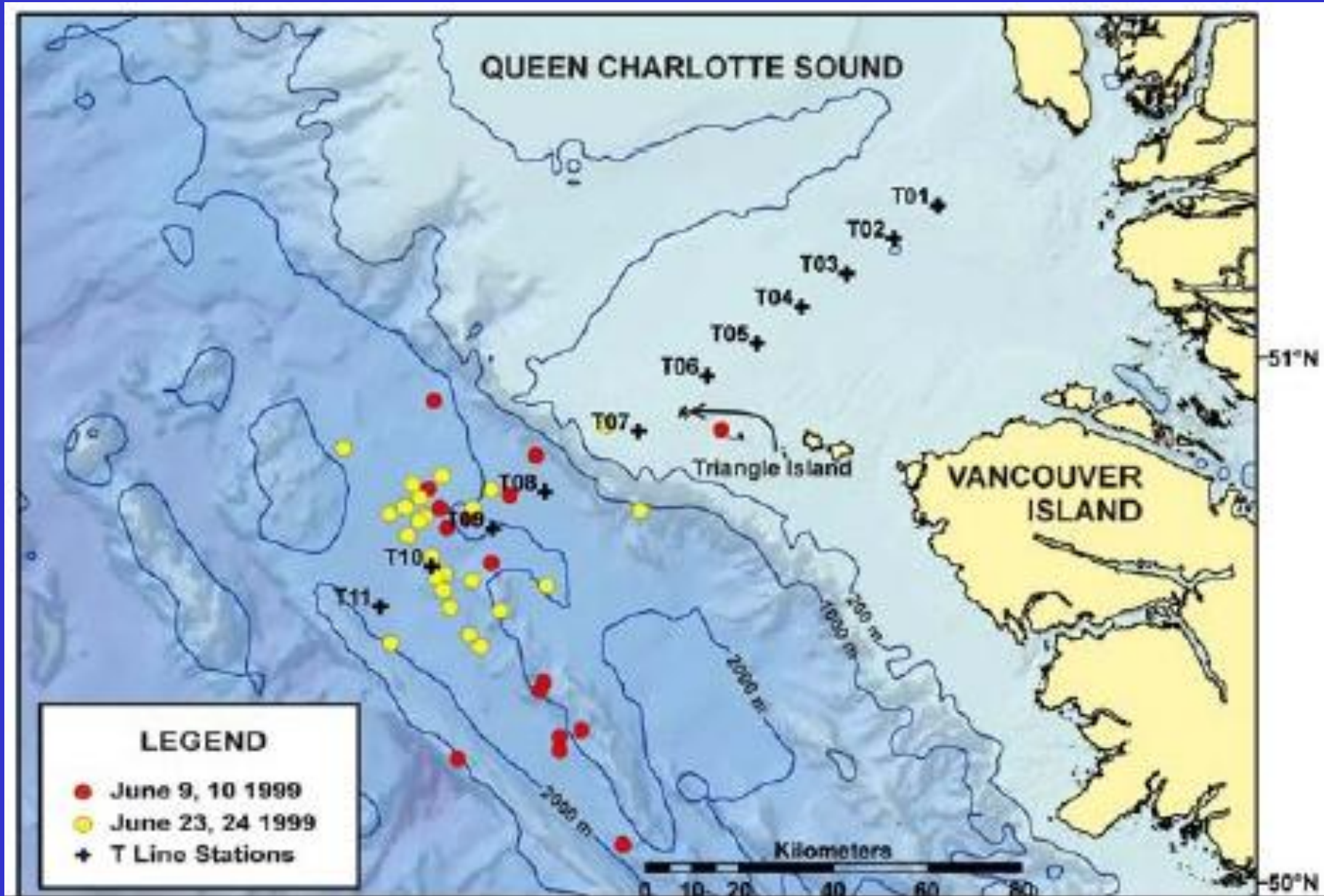


Figure 1. Placement of ATS radios with anchors on a CAAU.

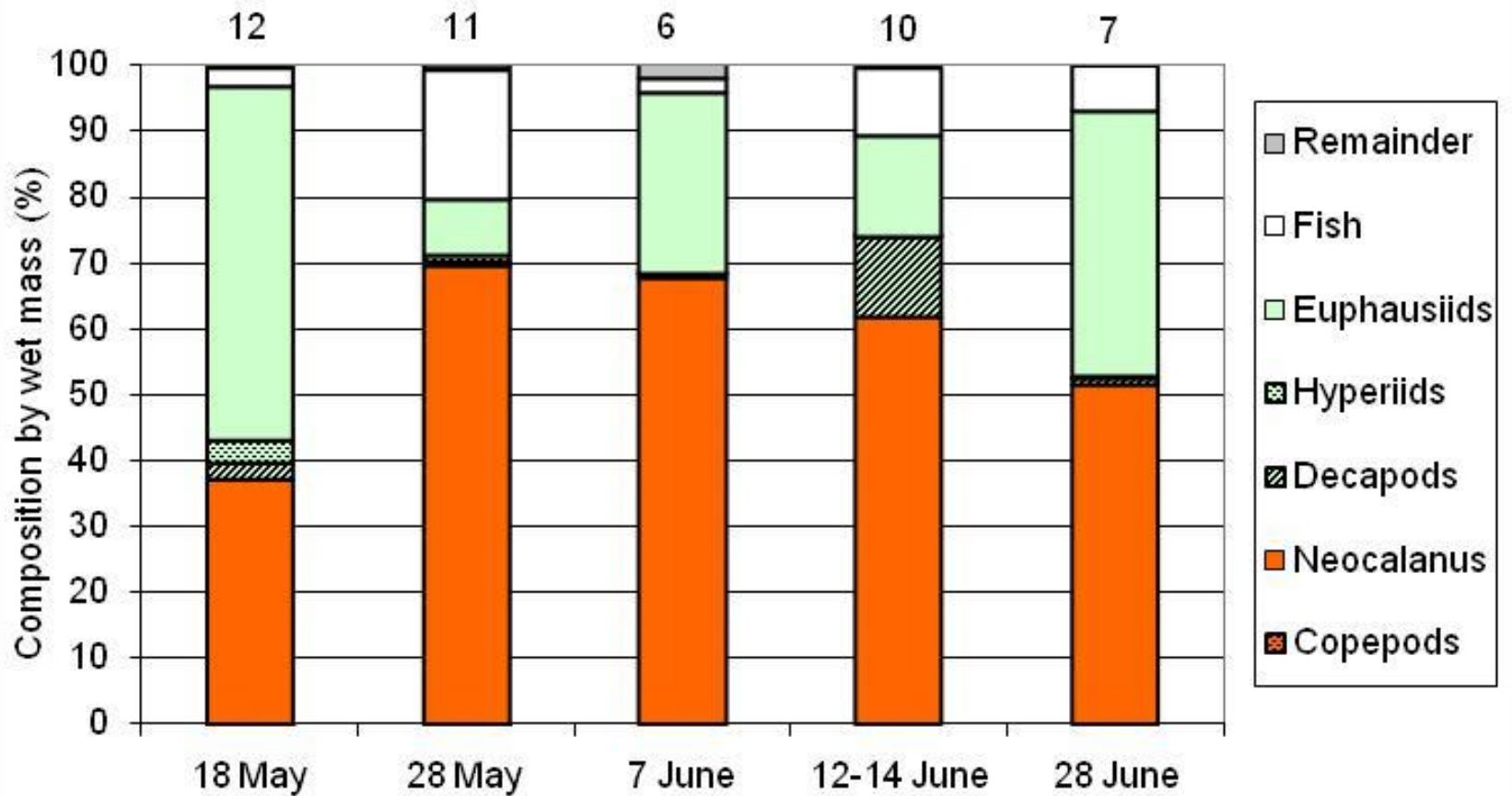
Aerial telemetry for detection of radio signals



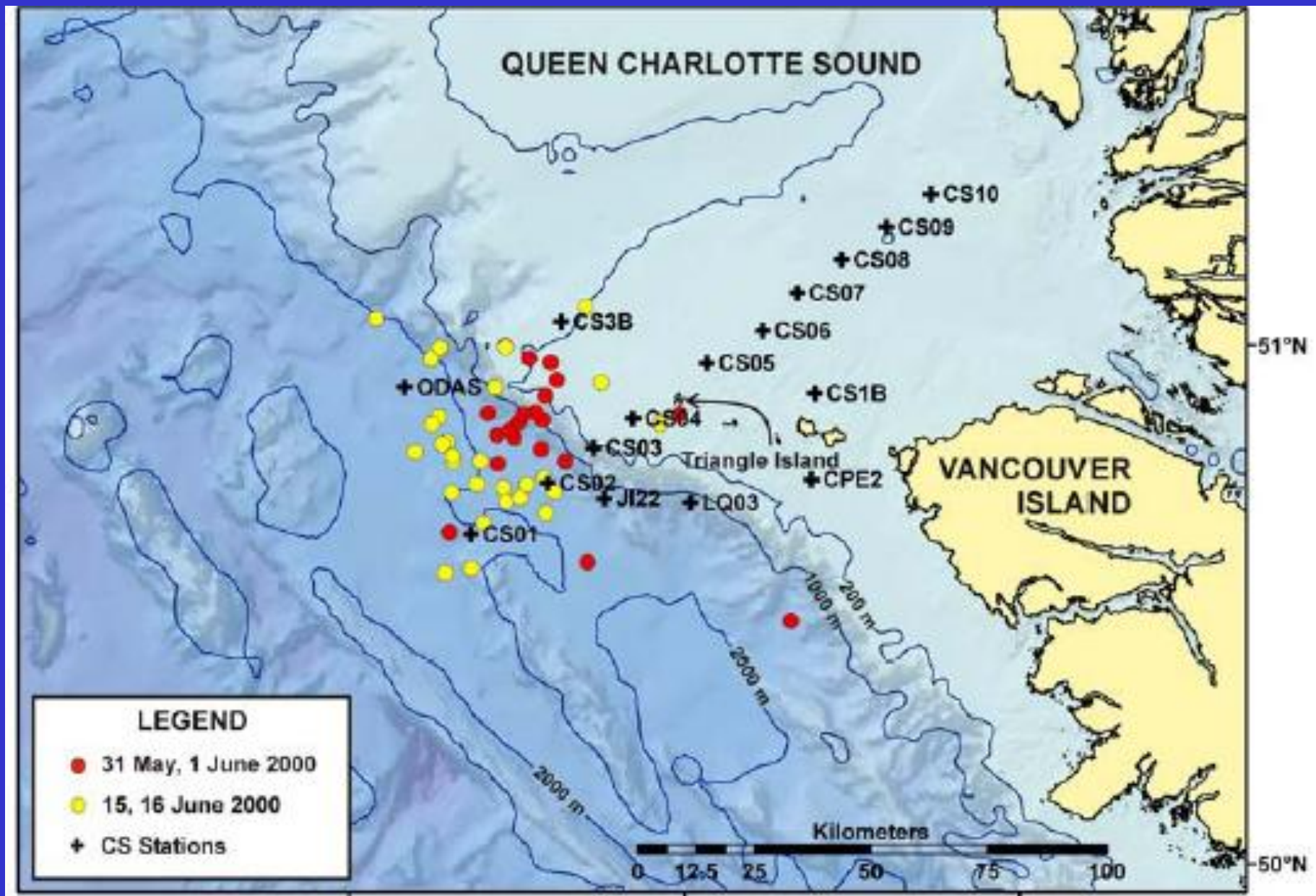
1999 telemetry



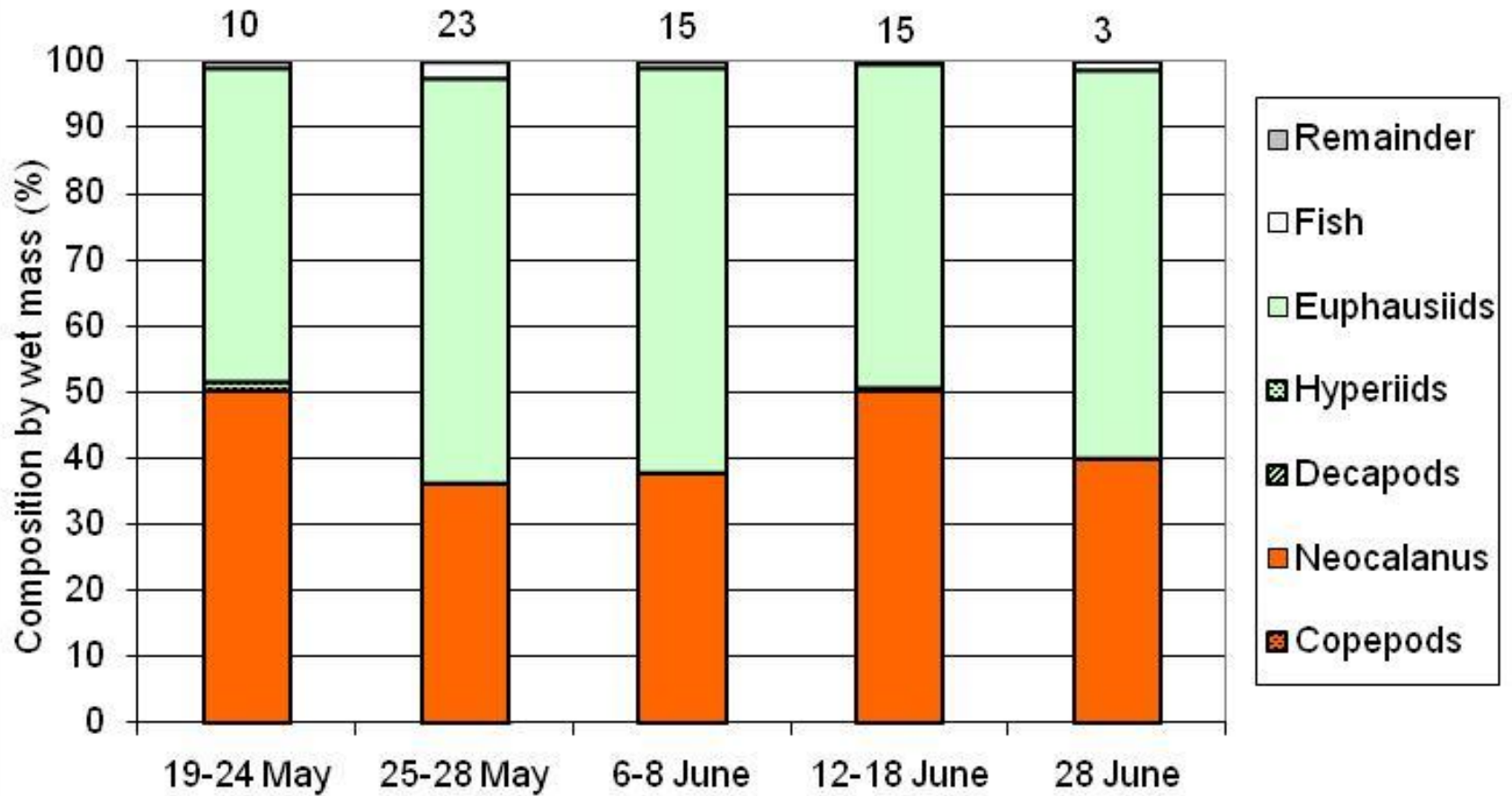
1999



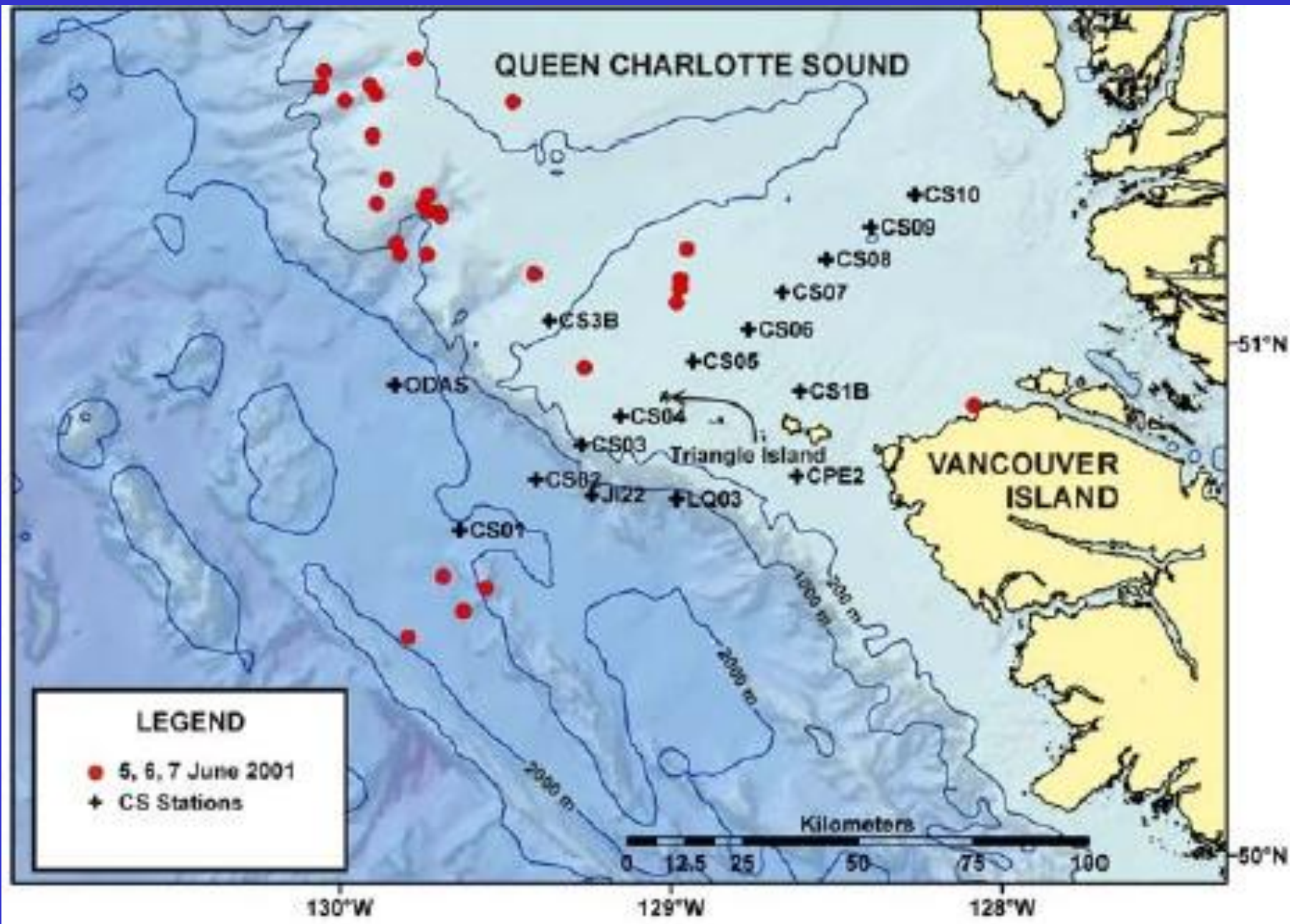
2000 telemetry



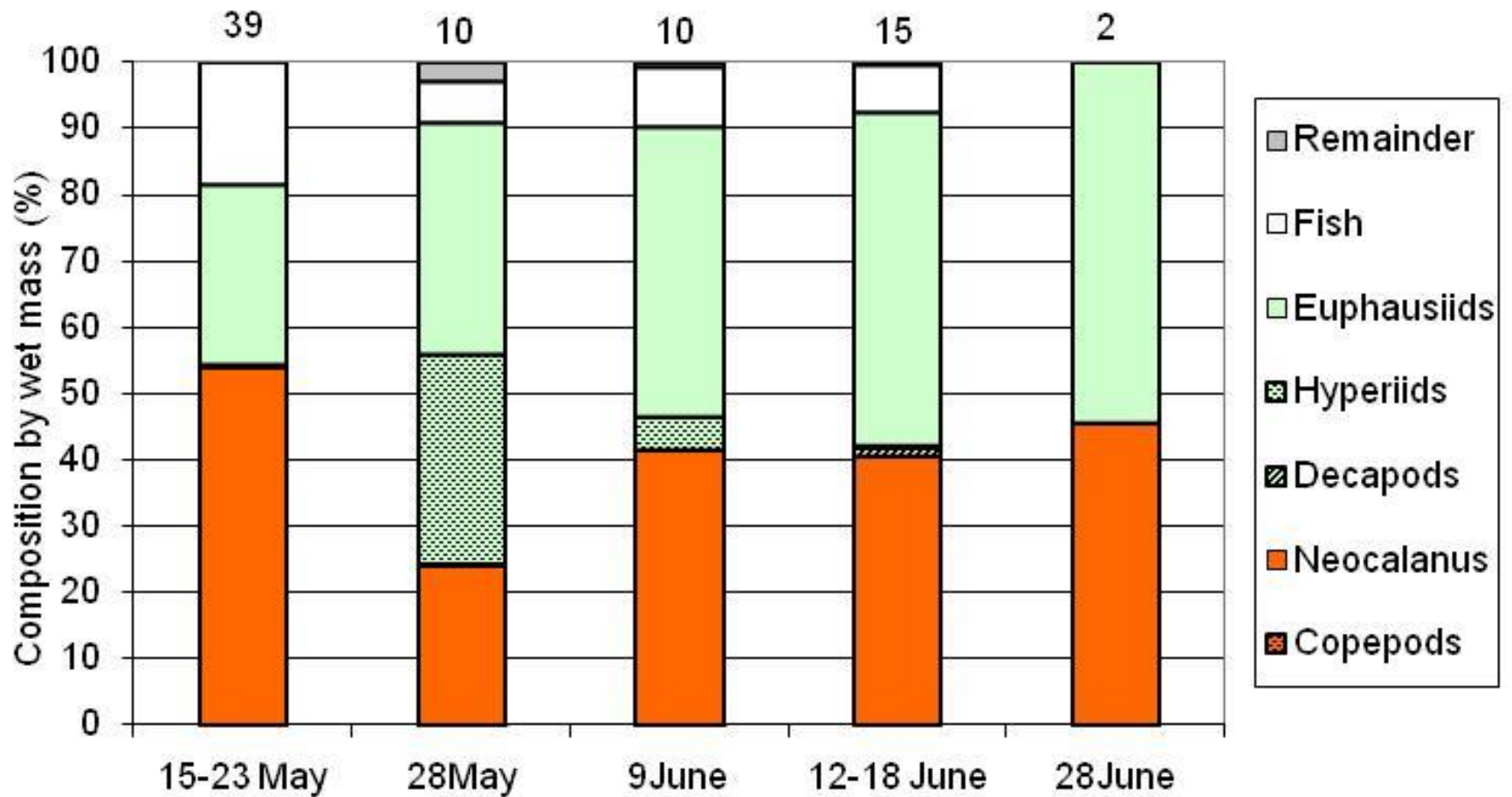
2000



2001 telemetry



2001

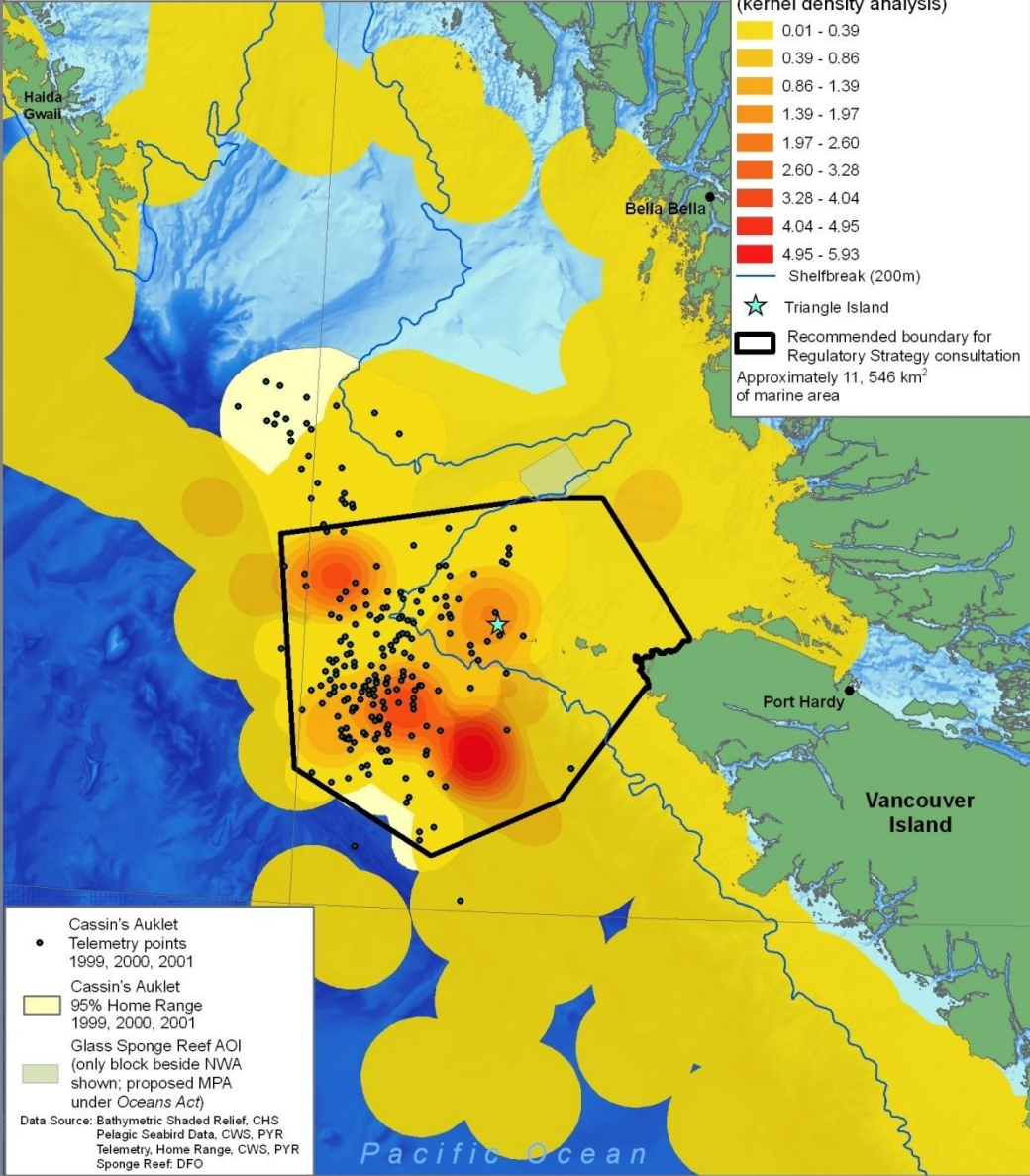


130°00'W

Scott Islands National Wildlife Area Recommended boundary for Regulatory Strategy consultation Cassin's Auklet

Cassin's Auklet Breeding Season
15 March - 1 August

Observed density
(kernel density analysis)



Cassin's Auklet
• Telemetry points
1999, 2000, 2001

Cassin's Auklet
□ 95% Home Range
1999, 2000, 2001

Glass Sponge Reef AOI
(only block beside NWA
shown; proposed MPA
under *Oceans Act*)

Data Source: Bathymetric Shaded Relief, CHS
Pelagic Seabird Data, CWS, PYR
Telemetry, Home Range, CWS, PYR
Sponge Reef, DFO

Pacific Ocean

NMWA Regulatory Strategy posted for public comment 25 March - 25 May 2013.

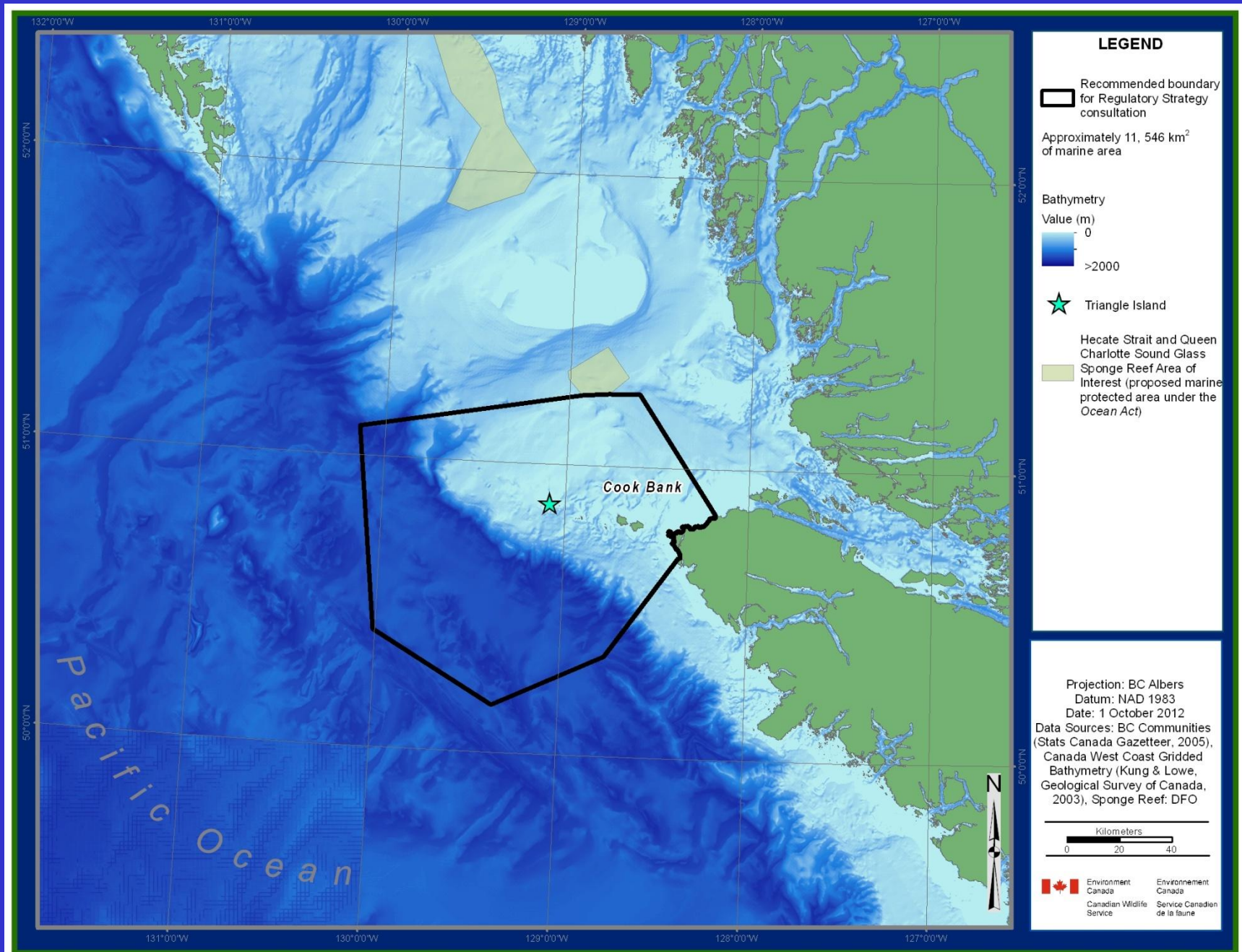
Designation expected Mid 2015

Slide courtesy Greg Jones, CWS

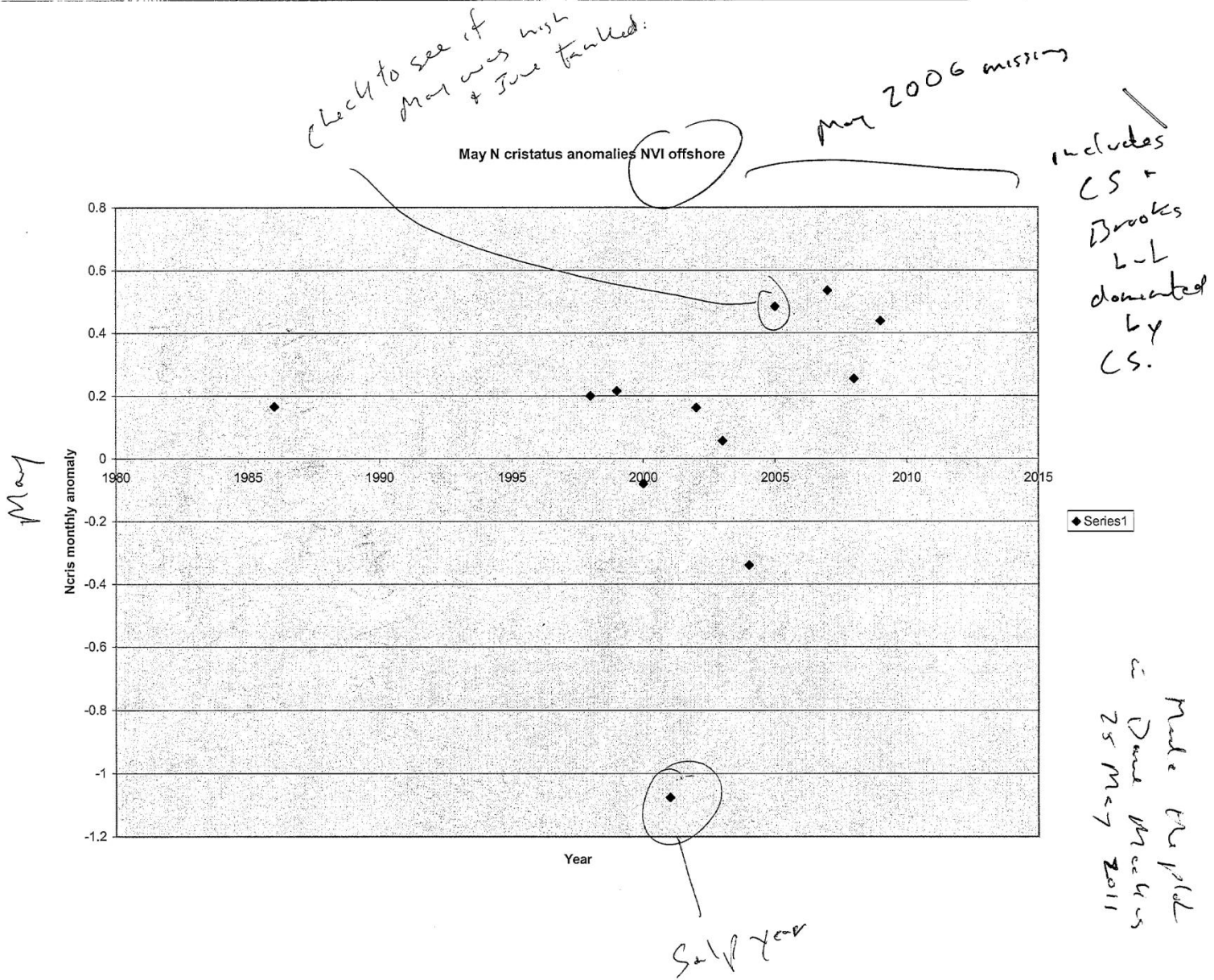
50°00'N



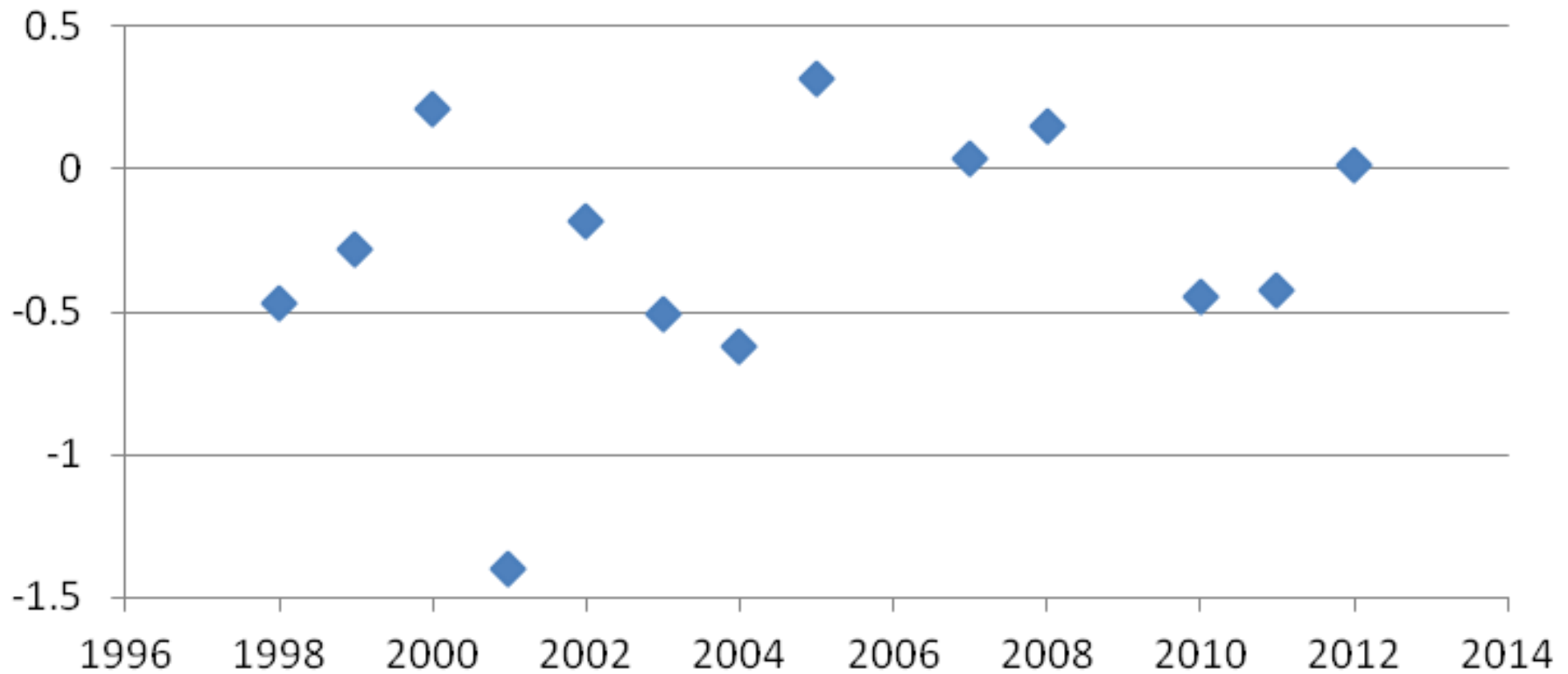
Proposed Scott Islands National Marine Wildlife Area



Are *N. cristatus* biomass anomalies usually positive offshore?



Neocalanus cristatus biomass anomalies in May



CS and T lines offshore stations

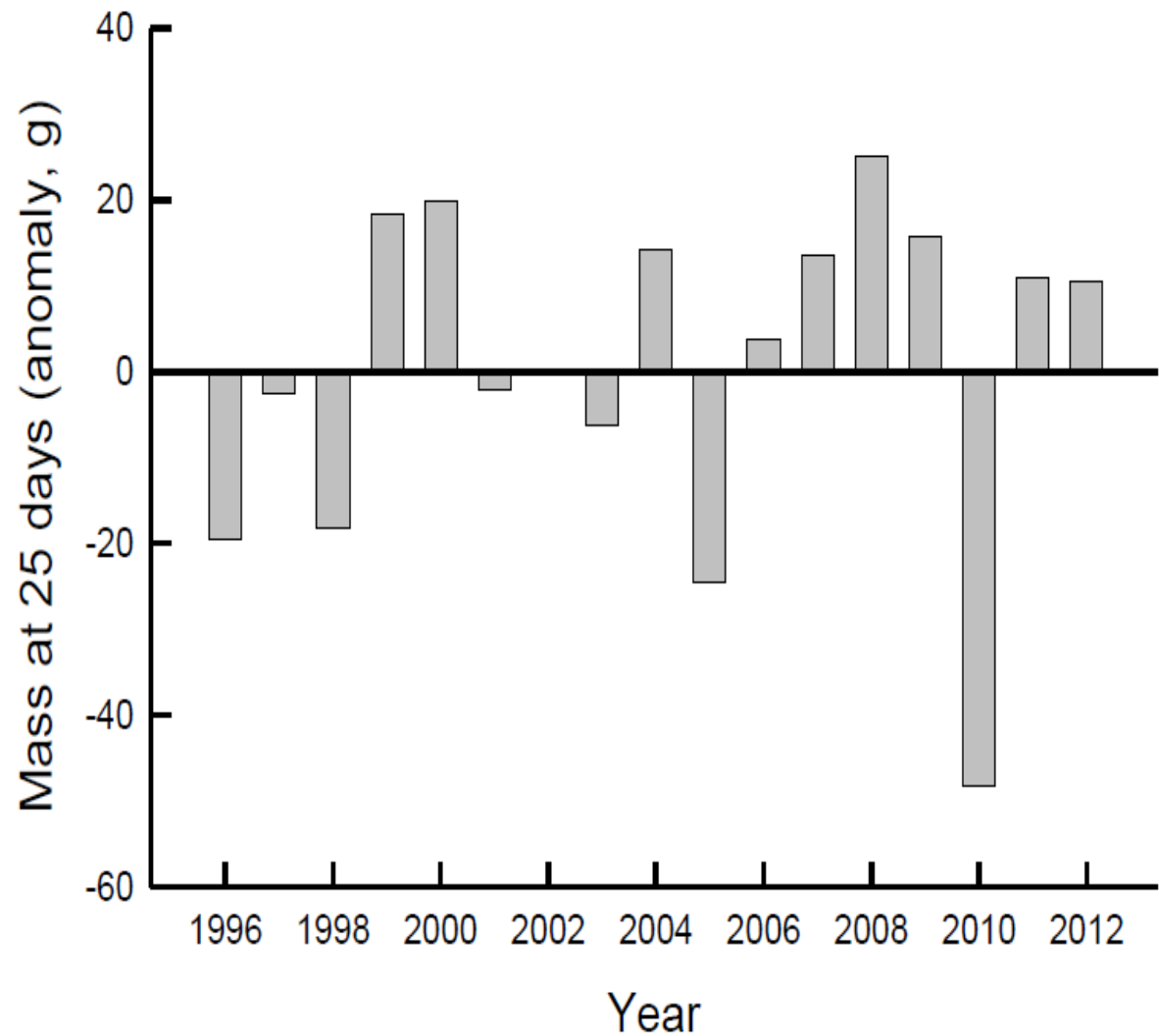
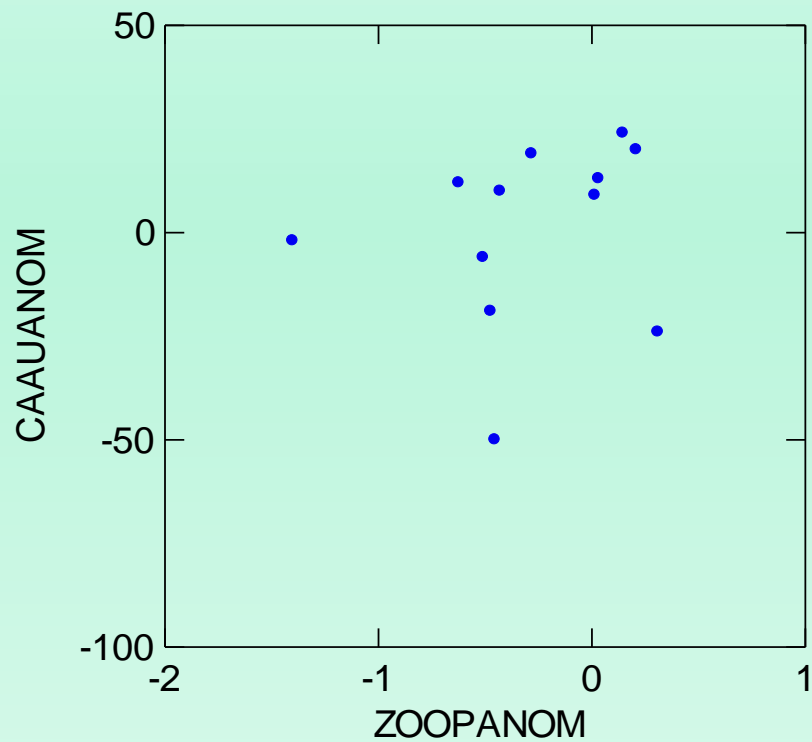


Figure 2. Mass of nestling Cassin's Auklets at 25 days of age, averaged for each year

Source Hipfner report Irvine & Crawford 2013

No relationship between CAAU performance and zooplankton biomass anomalies at offshore stations



Conclusions

1. Radio telemetry (planes) coupled with zooplankton sampling (ships) and Cassin's auklet nestling diet and transmitters (colony)
2. 1999-2001 Cassin's auklet foraging locations were generally linked to station locations which had *Neocalanus cristatus*.
3. *N cristatus* anomalies offshore were above average in 5 years and below average in 7 years.
4. Breeding performance was not linked to copepod biomass anomalies at the offshelf stations

Acknowledgements

- Field and ship crews
- “Nestucca” Oil spill Trust Fund
- Canadian Climate Change Action Fund
- Canadian Wildlife Service
- Centre for Wildlife Ecology (CWE) @ SFU
- NSERC grants to Fred Cooke (CWE@SFU)
- Canadian Coast Guard
- BC Parks
- Cooper Air
- Deborah Faust